

NPWS

**Glenamoy Bog Complex SAC
(site code: 000500)**

**Conservation objectives supporting document -
coastal habitats**

Version 1 - supplement 1

May 2026

IMPORTANT: This supplement, published in 2026, includes details relating to the EU habitats **2120 Shifting dunes along the shoreline with *Ammophila arenaria* ("white dunes")**, **2130 Fixed coastal dunes with herbaceous vegetation (grey dunes)*** and **2190 Humid dune slacks** which were added as Qualifying Interests for the site after the Site-Specific Conservation Objectives (Version 1) were published. This document should be read in conjunction with the Version 2 Site-Specific Conservation Objectives (NPWS, 2026), and with the Conservation objectives supporting document - Coastal habitats Version 1 (NPWS, 2017). Any references to these habitats in previously published Site-specific Conservation Objectives (SSCO), or SSCO supporting documents, including the mapping, are to be considered **superseded** by these updates.

Contents

1. Introduction	1
2. Coastal habitats	1
2.1 2120 Shifting dunes along the shoreline with <i>Ammophila arenaria</i> ("white dunes").....	1
2.1.1 Site description of habitat	1
2.1.2 Overall objective.....	1
2.1.3 Area	1
2.1.4 Range	1
2.1.5 Structure and Functions	2
2.2 2130 Fixed coastal dunes with herbaceous vegetation (grey dunes)*	2
2.2.1 Site description of habitat	2
2.2.2. Overall objective.....	3
2.2.3. Area	3
2.2.4. Range	3
2.2.5 Structure and Functions	3
2.3 2190 Humid dune slacks	4
2.3.1 Site description of habitat	4
2.3.2 Overall objective.....	4
2.3.3 Area	5
2.3.4 Range	5
2.3.5 Structure and Functions	5
3. References	7
Appendix 1 – Distribution map of Shifting dunes along the shoreline with <i>Ammophila arenaria</i> (white dunes) in Glenamoy Bog Complex SAC (000500)	8
Appendix 2 – Distribution map of Fixed coastal dunes with herbaceous vegetation (grey dunes)* in Glenamoy Bog Complex SAC (000500)	9
Appendix 3 – Distribution map of Humid dune slacks in Glenamoy Bog Complex SAC (000500) ..	10

Citation: NPWS (2026) Glenamoy Bog Complex SAC (site code 000500) Conservation objectives supporting document - coastal habitats V1 - supplement 1. Conservation Objectives Supporting Document Series. National Parks and Wildlife Service, Department of Housing, Local Government and Heritage, Dublin, Ireland.

1. Introduction

2120 Shifting dunes along the shoreline with *Ammophila arenaria* ("white dunes"), 2130 Fixed coastal dunes with herbaceous vegetation (grey dunes)* and 2190 Humid dune slacks were added as a Qualifying Interest(s) to Glenamoy Bog Complex SAC (site code: 000500) after the Site-Specific Conservation Objectives (Version 1) were published. This document sets out the SSCO(s) for the newly listed Qualifying Interest(s) for the site and acts as a supplement to the original SSCO Supporting Document.

2. Coastal habitats

2.1 2120 Shifting dunes along the shoreline with *Ammophila arenaria* ("white dunes")

2.1.1 Site description of habitat

2120 Shifting dunes along the shoreline with *Ammophila arenaria* ("white dunes") are present in several narrow strips on the south-west facing beach at Garter Hill and south of the estuary. The vegetation is very open with large areas of bare sand between the ridges. Another area of mobile dune occurs at the eastern edge of the site where winter tides and storms have scoured out the fixed dunes along the tidal inlet at Corraunboy (Ryle *et al.*, 2009).

2.1.2 Overall objective

The overall objective for '*Shifting dunes along the shoreline with Ammophila arenaria* ("white dunes")' in Glenamoy Bog Complex SAC (site code: 000500) is to '*maintain the Favourable conservation condition*'.

This objective is based on an assessment of the recorded condition of the habitat(s) under a range of attributes and targets. The assessment is divided into three main headings: (a) Area (b) Range and (c) Structure and Functions. This conservation objective applies to the total extent of this habitat within the SAC, including but not limited to the mapped areas of this habitat.

2.1.3 Area

Habitat area

Coastal habitats are generally dynamic and increase and decrease in area due to natural processes. These natural changes are not taken into account in conservation status assessments. Changes associated with human activities including destruction and restoration do contribute to the assessment of conservation status.

The area recorded for the 2120 Shifting dunes along the shoreline with *Ammophila arenaria* ("white dunes") habitat is 5.61ha.

No loss of 2120 habitat due to human activities has been observed on the site.

Target: Area stable or increasing, subject to natural processes, including erosion and succession.

2.1.4 Range

Habitat distribution

The 2120 Shifting dunes along the shoreline with *Ammophila arenaria* ("white dunes") habitat occurs in several patches within the northern sand dune system, while a larger extent of 2120 habitat is present across the estuary on the southern end.

Target: No decline in the distribution of this habitat, unless it is the result of natural processes.

2.1.5 Structure and Functions

Structure and Functions for Shifting dunes along the shoreline with *Ammophila arenaria* ("white dunes") are assessed on the basis of:

Physical structure: functionality and sediment supply

Target: Natural circulation of sediment and organic matter, absence of any physical obstructions or evidence of sediment extraction from the beach and its environs. Physical obstructions that have been in place and are unchanged since prior to 1994 are excluded from this target, unless they have a current adverse impact on sediment circulation.

Disturbance

Target: No more than 20% of the habitat should be subject to disturbance e.g. trampling, vehicle damage, removal of substrate.

Flowering and fruiting of any positive indicator species

Target: Present in 40% or more of stops.

Vegetation composition: typical species (positive indicators)

Target: At least one individual species occurs with a frequency of more than 40% of stops.

Vegetation composition: native negative indicator species

Target: No negative species occurs at a frequency of more than 60% of stops and combined cover of all negative species across the habitat is 5% or less and highest % cover of any negative species within any stop is 25% or less.

Vegetation composition: non-native species

Target: No non-native species occurs at a frequency of more than 20% of stops and no evidence that % cover is increasing

Indicators of local distinctiveness: site-specific target features (including rare and notable species)

Target: No evidence of decline since designation.

The Structure and Functions of the habitat were assessed and found to be in good condition. The habitat appears to be functioning naturally.

Future prospects were considered good, and the overall conservation status was assessed as Favourable.

2.2 2130 Fixed coastal dunes with herbaceous vegetation (grey dunes)*

2.2.1 Site description of habitat

The mapped areas consist of dry dune ridges with established vegetation, including frequent Marram Grass (*Ammophila arenaria*) (Delaney *et al.*, 2013). The location of the dunes at Garter Hill means they are exposed to Atlantic storms and gales. Several blowouts occur within the 2130 Fixed coastal dunes with herbaceous vegetation (grey dunes)*, likely resulting from strong wind action rather than human activities (Delaney *et al.*, 2013).

2.2.2. Overall objective

The overall objective for 'Fixed coastal dunes with herbaceous vegetation (grey dunes)*' in Glenamoy Bog Complex SAC (site code: 000500) is to 'maintain the Favourable conservation condition'.

This objective is based on an assessment of the recorded condition of the habitat(s) under a range of attributes and targets. The assessment is divided into three main headings: (a) Area (b) Range and (c) Structure and Functions. This conservation objective applies to the total extent of this habitat within the SAC, including but not limited to the mapped areas of this habitat.

2.2.3. Area

Habitat area

Coastal habitats are generally dynamic and increase and decrease in area due to natural processes. These natural changes are not taken into account in conservation status assessments. Changes associated with human activities including destruction and restoration do contribute to the assessment of conservation status.

The area recorded for the habitat 2130 Fixed coastal dunes with herbaceous vegetation (grey dunes)* is 113.21ha.

No loss of habitat due to human activities has been observed on the site.

Target: Area should be stable or increasing, subject to natural processes, including erosion and succession.

2.2.4. Range

Habitat distribution

The 2130 Fixed coastal dunes with herbaceous vegetation (grey dunes)* are primarily located north of the estuary, with an additional smaller area to the south.

Target: No decline in the distribution of this habitat, unless it is the result of natural processes.

2.2.5 Structure and Functions

Structure and Functions for Fixed coastal dunes with herbaceous vegetation (grey dunes)* are assessed on the basis of:

Physical structure: functionality and sediment supply

Target: Natural circulation of sediment and organic matter, absence of physical obstructions or evidence of sediment extraction from the beach and its environs. Physical obstructions that have been in place and are unchanged since prior to 1994 are excluded from this target, unless they have a current adverse impact on sediment circulation.

Disturbance

Target: No more than 20% of the habitat should be subject to disturbance e.g. trampling, vehicle damage, removal of substrate.

Bare sand

Target: Bare sand is present but does not exceed 10% of fixed dune habitat, subject to natural processes.

Vegetation structure: sward height

Target: Sward height is varied across the habitat. Between 30 and 70% of stops have an average height between 2-10cm. The remaining stops have taller sward, except for tracks, disturbed ground and by bare sand areas.

Flowering and fruiting of any positive indicator species

Target: Present in 40% or more of stops.

Vegetation composition: typical species (positive indicators)

Target: At least eight of the positive species occur with a frequency of more than 20% of stops and every stop contains at least four positive indicator species.

Vegetation composition: native negative indicator species

Target: No negative indicator species occurs at a frequency of more than 60% of stops and the total combined cover of all negative indicator species across the habitat is 5% or less and highest % cover of any negative indicator species within any stop is 25% or less.

Vegetation composition: non-native species

Target: No non-native species occurs at a frequency of more than 20% of stops and no evidence that % cover is increasing.

Vegetation composition: scrub/trees other than Juniper (*Juniperus communis*)

Target: Trees and scrub do not occur at a frequency of more than 60% of stops and combined cover across the habitat is 5%.

Vegetation composition: trees/saplings from adjacent plantations

Target: Present in or close to (*i.e.* within 20m) no more than 20% of stops.

Indicators of local distinctiveness: site-specific target features (including rare and notable species)

Target: No evidence of decline since designation.

The 2130 Fixed coastal dunes with herbaceous vegetation (grey dunes)* habitat was assessed and found to be in good condition. The habitat appears to be functioning naturally. There was some evidence of off-road driving, though this was considered to have a medium impact. Some storm disturbance was also recorded at the site (Delaney *et al.*, 2013).

Future prospects were considered good.

2.3 2190 Humid dune slacks**2.3.1 Site description of habitat**

Secondary dune slacks occur within some of the deep blowouts, while the more extensive areas of 2190 Humid dune slacks have the characteristics of primary dune slacks (Delaney *et al.*, 2013).

2.3.2 Overall objective

The overall objective for 'Humid dune slacks' in Glenamoy Bog Complex SAC (site code: 000500) is to 'restore the Favourable conservation condition'.

This objective is based on an assessment of the recorded condition of the habitat(s) under a range of attributes and targets. The assessment is divided into three main headings: (a) Area (b) Range and (c) Structure and Functions. This conservation objective applies to the total extent of this habitat within the SAC, including but not limited to the mapped areas of this habitat.

2.3.3 Area

Habitat area

Coastal habitats are generally dynamic and increase and decrease in area due to natural processes. These natural changes are not taken into account in conservation status assessments. Changes associated with human activities including destruction and restoration do contribute to the assessment of conservation status.

The area recorded for the 2190 Humid dune slacks habitat is 6.63ha.

No loss of habitat due to human activities has been observed on the site.

Target: Area stable or increasing, subject to natural processes, including erosion and succession.

2.3.4 Range

Habitat distribution

The 2190 Humid dune slacks habitat is located within the 2130 Fixed coastal dunes with herbaceous vegetation (grey dunes)* habitat on the northern side of the estuary.

Target: No decline in the distribution of this habitat, unless it is the result of natural processes.

2.3.5 Structure and Functions

Structure and Functions for Humid dune slacks are assessed on the basis of:

Physical structure: functionality and sediment supply

Target: Natural circulation of sediment and organic matter, absence of any physical obstructions or evidence of sediment extraction from the beach and its environs. Physical obstructions that have been in place and are unchanged since prior to 1994 are excluded from this target, unless they have a current adverse impact on sediment circulation.

Disturbance

Target: No more than 20% of the habitat should be subject to disturbance e.g. trampling, vehicle damage, removal of substrate.

Physical structure: hydrological and flooding regime

Target: Hydrological regime supports typical seasonal fluctuations.

Bare ground

Target: Bare ground should be present but should not exceed 5% of dune slack habitat, with the exception of pioneer slacks which can have up to 20% bare ground.

Vegetation composition: typical species (positive indicators)

Target: At least four of the positive species occur with a frequency of more than 40% of stops and another two species occur with a frequency of more than 20% of stops and every stop contains at least three positive species.

Vegetation composition: bryophytes

Target: Present in more than 20% of stops.

Vegetation composition: native negative indicator species

Target: No negative indicator species occurs at a frequency of more than 60% of stops and the total combined cover of all negative indicator species across the habitat is 5% or less and highest % cover of any negative indicator species within any stop is 25% or less.

Vegetation composition: non-native species

Target: No non-native species occurs at a frequency of more than 20% of stops and no evidence that % cover has increased.

Vegetation composition: trees/scrub

Target: Present at no more than 40% of stops and combined cover of 5% or less.

Vegetation composition: forb:grass ratio

Target: Forb (herbaceous flowering plant) cover over 30% and grass cover below 70%.

Vegetation composition: cover of *Salix repens*

Target: Less than 40% cover of *Salix repens*.

Indicators of local distinctiveness: site-specific target features (including rare and notable species)

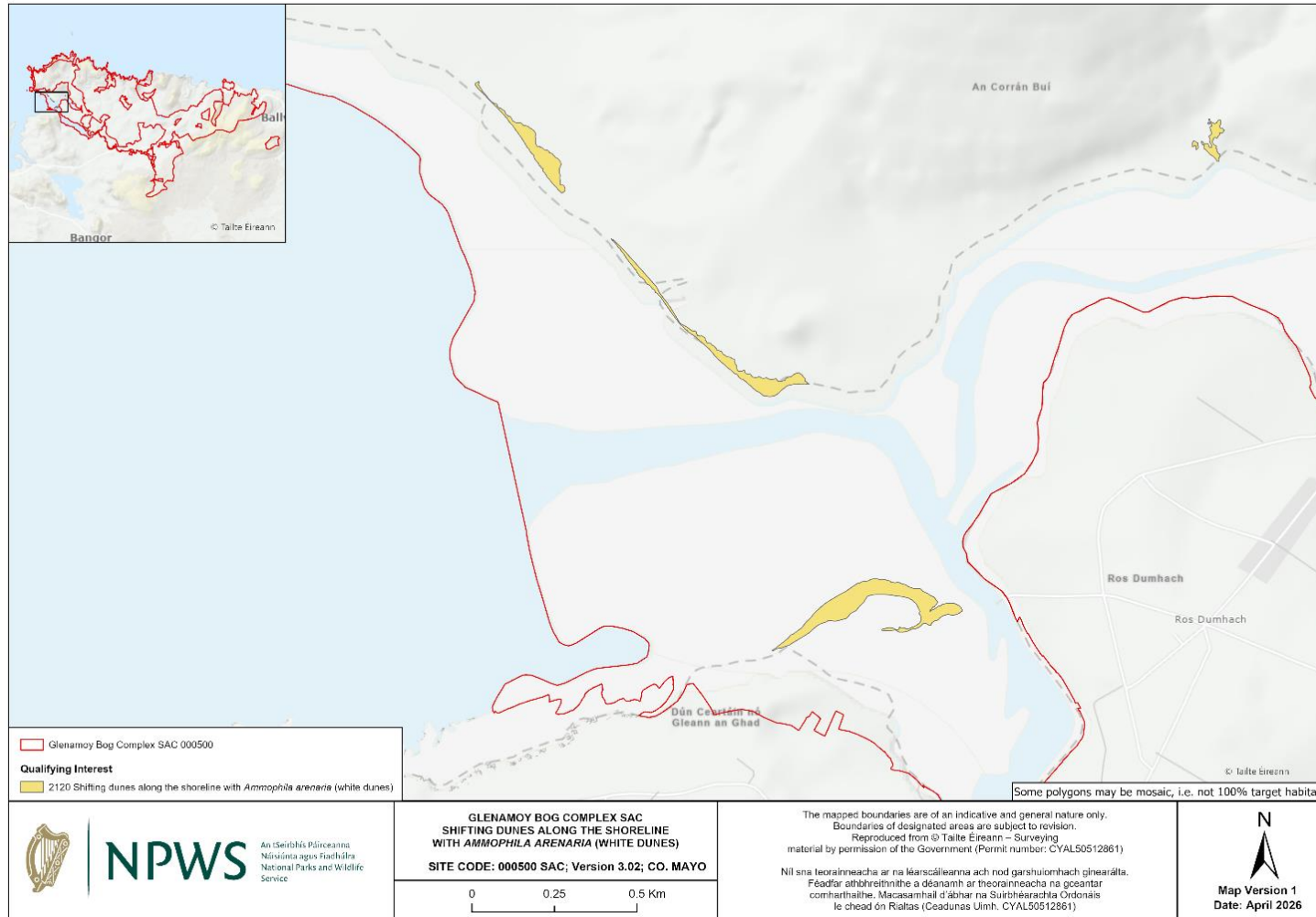
Target: No evidence of decline since designation.

Much of the 2190 Humid dune slacks habitat at Garter Hill was in good condition. However, vehicle tracks were clearly visible in part of the habitat, and the vegetation and upper sand layer had been dislodged in several places. Overgrazing was noted in previous surveys (Ryle *et al.*, 2009), and during the Delaney *et al.* (2013) survey it was considered to be affecting the Future prospects of the site, due to sheep grazing. The overall condition of the site was assessed as Unfavourable by Delaney *et al.* (2013).

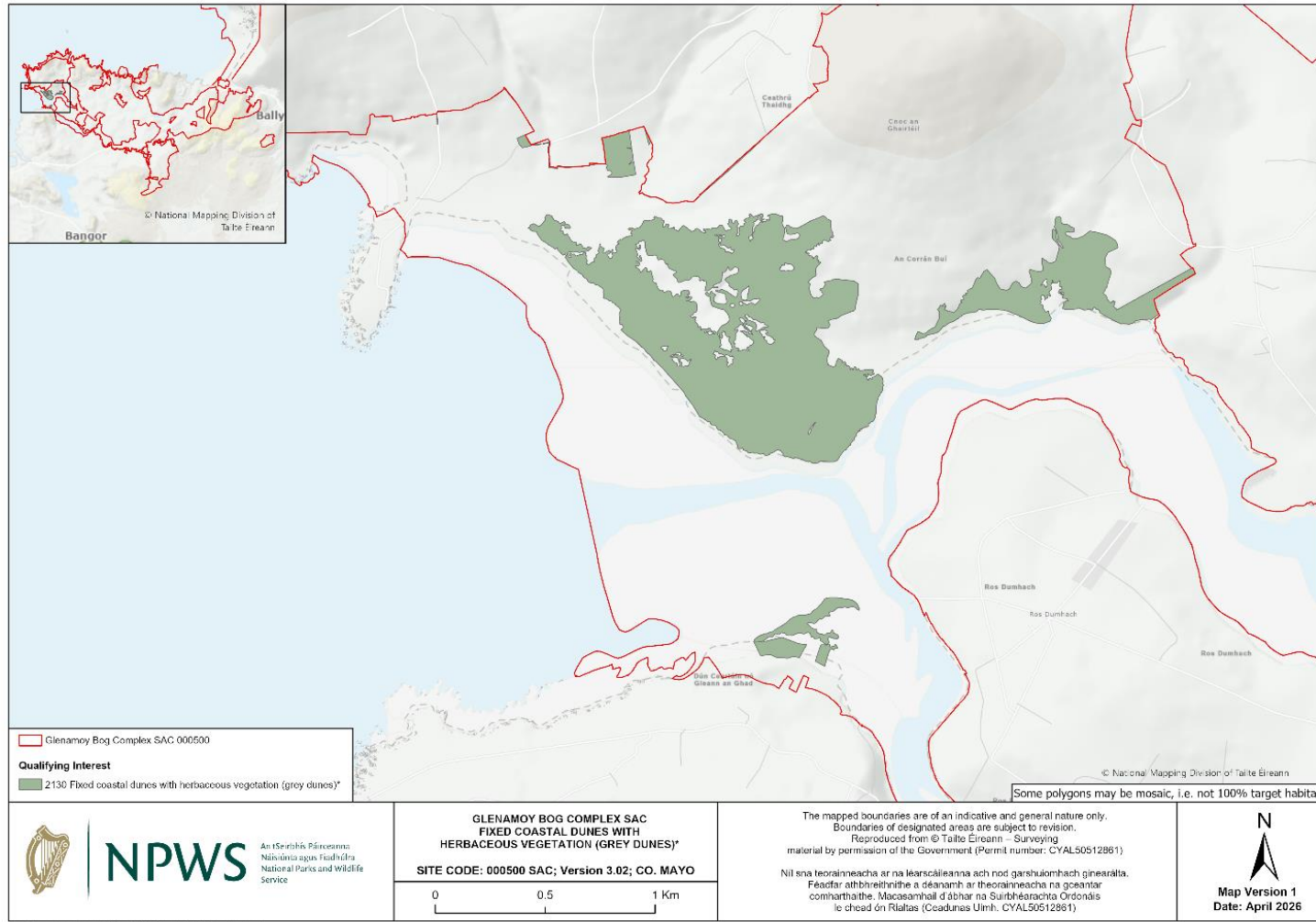
3. References

- Barron, S., Delaney, A., Perrin, P., Martin, J. and O'Neill, F. (2011) National survey and assessment of the conservation status of Irish sea cliffs. Irish Wildlife Manuals, No. 53. National Parks and Wildlife Service, Department of the Environment, Heritage and Local Government, Dublin, Ireland.
- Brophy, J.T., Perrin, P.M., Penk, M.R., Devaney, F.M. and Leyden, K.J. (2019) Saltmarsh Monitoring Project 2017-2018. Irish Wildlife Manuals, No. 108. National Parks and Wildlife Service, Department of Culture, Heritage and the Gaeltacht, Ireland.
- Browne, A. (2005) National inventory of sea cliffs and coastal heaths. Unpublished report to the National Parks and Wildlife Service, Dublin.
- Delaney, A., Devaney, F.M., Martin, J.R. and Barron, S.J. (2013) Monitoring survey of Annex I sand dune habitats in Ireland. Irish Wildlife Manuals, No. 75. National Parks and Wildlife Service, Department of Arts, Heritage and the Gaeltacht, Dublin, Ireland.
- European Commission (2013) Interpretation Manual of European Union Habitats – EUR 28. DG Environment - Nature and Biodiversity, Brussels.
- Fossitt, J.A. (2000) A guide to habitats in Ireland. The Heritage Council, Kilkenny.
- JNCC (2004) Common standards and monitoring guidance for maritime cliff and slope habitats. Joint Nature Conservation Committee, Peterborough, UK.
- Martin, J.R., Daly, O.H. and Devaney F.M. (2017) Survey and assessment of vegetated shingle and associated habitats at 30 coastal sites. Volume 1: Main report. Irish Wildlife Manuals, No. 98. National Parks and Wildlife Service, Department of Arts, Heritage, Regional, Rural and Gaeltacht Affairs, Dublin.
- McCorry, M. and Ryle, T. (2009) Saltmarsh Monitoring Project 2007-2008. Unpublished report to the National Parks and Wildlife Service, Dublin.
- Moore, D. and Wilson, F. (1999) National Shingle Beach Survey of Ireland 1999. Unpublished report to NPWS, Dublin.
- NPWS (2013) The Status of EU Protected Habitats and Species in Ireland. Habitat Assessments Volume 2. Version 1.0. Unpublished Report, National Parks and Wildlife Services. Department of Arts, Heritage and the Gaeltacht, Dublin, Ireland.
- NPWS (2017) Glenamoy Bog Complex SAC (site code 000500) Conservation objectives supporting document – Coastal habitats V1. Conservation Objectives Supporting Document Series. National Parks and Wildlife Service, Department of Arts, Heritage and the Gaeltacht, Dublin, Ireland.
- Perrin, P.M., Waldren, S., Penk, M.R. and O'Neill, F.H. (2017) Saltmarsh Function and Human Impacts in Relation to Ecological Status (SAMFHIREs). EPA Research Report, Wexford, Ireland.
- Ryle, T., Murray, A., Connolly, K. and Swann, M. (2009) Coastal Monitoring Project 2004-2006. Unpublished report to the National Parks and Wildlife Service, Dublin.
- Wyse Jackson, M., FitzPatrick, Ú., Cole, E., Jebb, M., McFerran, D., Sheehy Skeffington, M. and Wright, M. (2016) Ireland Red List No. 10: Vascular Plants. National Parks and Wildlife Service, Department of Arts, Heritage, Regional, Rural and Gaeltacht Affairs, Dublin, Ireland.

Appendix 1 – Distribution map of Shifting dunes along the shoreline with *Ammophila arenaria* (white dunes) in Glenamoy Bog Complex SAC (000500)



Appendix 2 – Distribution map of Fixed coastal dunes with herbaceous vegetation (grey dunes)* in Glenamoy Bog Complex SAC (000500)



Appendix 3 – Distribution map of Humid dune slacks in Glenamoy Bog Complex SAC (000500)

