

National Parks and Wildlife Service

Conservation Objectives Series

Dovegrove Callows SPA 004137



NPWS

An tSeirbhís Páirceanna
Náisiúnta agus Fiadhúlra
National Parks and Wildlife
Service

**National Parks and Wildlife Service,
Department of Housing, Local Government and Heritage,
90 King Street North, Dublin 7, D07 N7CV, Ireland.
Web: www.npws.ie
E-mail: natureconservation@npws.gov.ie**

Citation:

**NPWS (2025) Conservation Objectives: Dovegrove Callows SPA 004137. Version
1. National Parks and Wildlife Service, Department of Housing, Local
Government and Heritage.**

**Series Editors: Maria Long and Colin Heaslip
ISSN 2009-4086**

Introduction

The overall aim of the Habitats Directive is to maintain or restore the favourable conservation status of habitats and species of community interest. These habitats and species are listed in the Habitats and Birds Directives and Special Areas of Conservation and Special Protection Areas are designated to afford protection to the most vulnerable of them. These two designations are collectively known as the Natura 2000 network.

European and national legislation places a collective obligation on Ireland and its citizens to maintain habitats and species in the Natura 2000 network at favourable conservation condition. The Government and its agencies are responsible for the implementation and enforcement of regulations that will ensure the ecological integrity of these sites.

A site-specific conservation objective aims to define favourable conservation condition for a particular habitat or species at that site.

The maintenance of habitats and species within Natura 2000 sites at favourable conservation condition will contribute to the overall maintenance of favourable conservation status of those habitats and species at a national level.

Favourable conservation status of a habitat is achieved when:

- its natural range, and area it covers within that range, are stable or increasing, and
- the specific structure and functions which are necessary for its long-term maintenance exist and are likely to continue to exist for the foreseeable future, and
- the conservation status of its typical species is favourable.

The favourable conservation status of a species is achieved when:

- population dynamics data on the species concerned indicate that it is maintaining itself on a long-term basis as a viable component of its natural habitats, and
- the natural range of the species is neither being reduced nor is likely to be reduced for the foreseeable future, and
- there is, and will probably continue to be, a sufficiently large habitat to maintain its populations on a long-term basis.

Notes/Guidelines:

1. The targets given in these conservation objectives are based on best available information at the time of writing. As more information becomes available, targets for attributes may change. These will be updated periodically, as necessary.
2. An appropriate assessment based on these conservation objectives will remain valid even if the targets are subsequently updated, providing they were the most recent objectives available when the assessment was carried out. It is essential that the date and version are included when objectives are cited.
3. Assessments cannot consider an attribute in isolation from the others listed for that habitat or species, or for other habitats and species listed for that site. A plan or project with an apparently small impact on one attribute may have a significant impact on another.
4. Please note that the maps included in this document do not necessarily show the entire extent of the habitats and species for which the site is listed. This should be borne in mind when appropriate assessments are being carried out.
5. When using these objectives, it is essential that the relevant backing/supporting documents are consulted, particularly where instructed in the targets or notes for a particular attribute.

Qualifying Interests

** indicates a priority habitat under the Habitats Directive*

| | |
|--------|-----------------------|
| 004137 | Dovegrove Callows SPA |
|--------|-----------------------|

| | |
|------|---|
| A395 | Greenland White-fronted Goose <i>Anser albifrons flavirostris</i> |
|------|---|

Supporting documents, relevant reports & publications

Supporting documents, NPWS reports and publications are available for download from: www.npws.ie/Publications

NPWS Documents

Year : 2013
Title : A review of the SPA network of sites in the Republic of Ireland
Author : NPWS
Series : Published Report

Other References

Year : 1995
Title : Impacts of hunting disturbance on waterbirds - a review
Author : Madsen, J.; Fox, A.D.
Series : Wildlife Biology 1(4):193-207

Year : 2016
Title : Assessing connectivity with Special Protection Areas (SPAs)
Author : Scottish Natural Heritage
Series : Guidance Series Version 3 - June 2016

Year : 2019
Title : Report of the 2018/19 international census of Greenland white-fronted geese
Author : Fox, T.; Francis, I.; Walsh, A; Norriss, D.
Series : Unpublished report

Year : 2019
Title : Report under the Article 12 of the Birds Directive Period 2008-2012
Author : EEA
Series : European Environment Agency. European Topic Centre on Biological Diversity. Pp 1-9

Year : 2020
Title : Report of the 2019/20 international census of Greenland white-fronted geese
Author : Fox, T.; Francis, I.; Walsh, A.; Norriss, D.
Series : Unpublished report

Year : 2021
Title : Report of the 2020/21 international census of Greenland white-fronted geese
Author : Fox, T.; Francis, I.; Walsh, A.; Norriss, D.; Kelly, S.
Series : Unpublished report

Year : 2022
Title : Report of the 2021/22 international census of Greenland white-fronted geese
Author : Fox, T.; Francis, I.; Walsh, A; Norriss, D.; Kelly, S.
Series : Unpublished report

Year : 2023
Title : Report of the 2022/23 international census of Greenland white-fronted geese
Author : Fox, T.; Francis, I.; Walsh, A; Norriss, D.; Kelly, S.
Series : Unpublished report

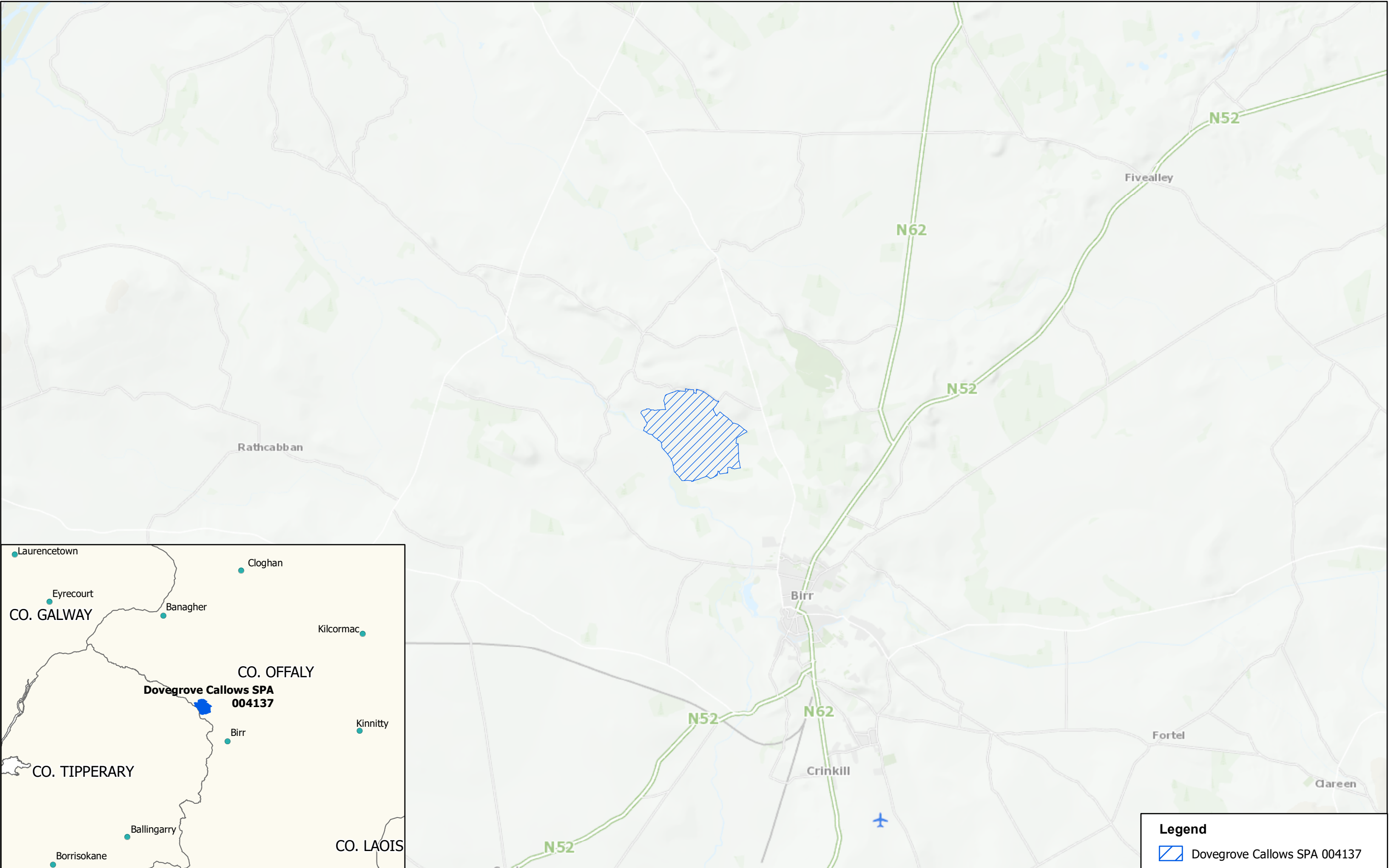
Conservation Objectives for : Dovegrove Callows SPA [004137]

A395 Greenland White-fronted Goose *Anser albifrons flavirostris*

To restore the Favourable conservation condition of Greenland White-fronted Goose in Dovegrove Callows SPA, which is defined by the following list of attributes and targets:


| Attribute | Measure | Target | Notes |
|---------------------------------------|--|---|--|
| Winter population trend | Percentage change in number of individuals | Long term winter population trend is stable or increasing | The national population of Greenland White-fronted Goose has declined by 13% between 1985 - 2018 (EEA, 2019). It is understood that a single flock of Greenland White-fronted Goose uses the Dovegrove Callows SPA and the River Little Brosna Callows SPA (see NPWS, 2013). During the baseline assessments to inform SPA designation, 527 Greenland White-fronted Goose were estimated to be using the Dovegrove Callows SPA and the River Little Brosna Callows SPA (5 year mean of peak counts for baseline period 1994/95 - 1998/99; NPWS, 2013). More recent data showed a population of 180 Greenland White-fronted Goose used the Dovegrove Callows SPA and the River Little Brosna Callows SPA (5 year mean of peak counts from NPWS monitoring for period 2018/19 - 2022/23; see Fox et al., 2019, 2020, 2021, 2022 and 2023). This represents a population decrease of 66% since the baseline period, which is greater than the national population trend |
| Winter spatial distribution | Hectares, time and intensity of use | Sufficient number of locations, area, and availability (in terms of timing and intensity of use) of suitable habitat to support the population target | Distribution encapsulates the number of locations and area of potentially suitable habitat for the wintering population and its availability for use. The suitability and availability of habitat areas are likely to vary throughout the season, for example, due to variation in land management practices or the abundance of resources available (due to natural variation and other factors). This will affect the spatio-temporal patterns of use of the habitats by the wintering population |
| Disturbance at wintering site | Intensity, frequency, timing and duration | Disturbance occurs at levels that do not significantly impact the achievement of targets for population trend and spatial distribution | The impact of any significant disturbance (direct or indirect) to the wintering population will ultimately affect the achievement of targets for population trend and/or spatial distribution. Disturbance contributes to increased energetic expenditure which can result in increased likelihood of winter mortality or reduced fitness (if energy expenditure is greater than energy gain) and, in turn, negatively impact population trends (see, for example, Madsen and Fox, 1995). Factors such as intensity, frequency, timing and duration of a (direct or indirect) disturbance source must be taken into account to determine the potential impact upon the targets for population trend and spatial distribution |
| Barriers to connectivity and site use | Number, location, shape and hectares | Barriers do not significantly impact the wintering population's access to the SPA or other ecologically important sites outside the SPA | Barriers limiting the population's access to this SPA or ecologically important sites outside the SPA will ultimately affect the achievement of targets for population trend and/or spatial distribution. Factors such as the number, location, shape and area of potential barriers must be taken into account to determine their potential impact. Access to ecologically important sites outside the SPA must also be considered as a single SPA may not satisfy all the ecological requirements of the wintering population, and it may require access to other SPAs or sites for certain activities, such as foraging when preferred foraging areas are unavailable due to disturbance, extensive flooding, or other factors |

| | | | |
|---|---|--|---|
| Forage spatial distribution, extent and abundance | Location, hectares, and forage biomass | Sufficient number of locations, area of suitable habitat and available forage biomass to support the population target | This species is a grazer, feeding on a wide range of vegetation. Key forage materials include roots, tubers (such as potatoes), shoots (such as winter wheat), stolons, rhizomes, leaves (such as grasses), and seed such as (spilled) grain. Key habitats include peat bogs (including raised bogs and blanket bogs), grasslands (such as wet grassland, callows, semi-improved grassland, and intensive grassland), arable stubble, winter cereal fields, coastal grasslands, and occasionally salt marsh. In general, the foraging distance of wintering Greenland White-fronted Goose from night roosts is estimated at 5km to 8km (Scottish Natural Heritage, 2016), although this will vary depending on site and landscape |
| Roost spatial distribution and extent | Location and hectares of roosting habitat | Sufficient number of locations, area and availability of suitable roosting habitat to support the population target | Roosting is a critical ecological requirement for the wintering population. Overnight roosting habitat mainly consists of permanent waterbodies, such as lakes, estuaries, bays, and other open waterbodies. When roosting in waterbodies, this species can roost on above-water features such as sandbanks. Daytime roosting is also a common behaviour, where birds minimise activity levels to conserve energy, while benefitting from the vigilance of other flock members. A lack of sufficient and suitable roosting habitats can result in increased mortality risk, whether indirectly (e.g. via increased energy expenditure travelling to/from roost sites) or directly (e.g. via increased predation risk), or reduction in site use; this would ultimately affect the achievement of targets for population trend and/or spatial distribution |
| Supporting habitat: area and quality | Hectares and quality | Sufficient area of utilisable habitat available in ecologically important sites outside the SPA | The wintering population can make extensive use of suitable habitats in important areas outside the SPA, for foraging and roosting. The extent, availability and quality of these supporting habitats may be of importance for the resilience of the SPA population. Suitable supporting habitats include those highlighted in the attributes for foraging and roosting habitat |



Legend

 Dovegrove Callows SPA 004137



NPWS


An tSeirbhís Páircíeanna
Náisiúnta agus Fiadhúlra
National Parks and Wildlife
Service

**MAP 1:
DOVEGROVE CALLOWS SPA
CONSERVATION OBJECTIVES
SPA DESIGNATION**

Map to be read in conjunction with the NPWS Conservation Objectives Document

**SITE CODE:
SPA 004137; version 3
CO. OFFALY**

0 0.35 0.7 1.4 Kilometres



The mapped boundaries are of an indicative and general nature only. Boundaries of designated areas are subject to revision.
© Includes National Mapping Division of Tailte Éireann data
reproduced under National Mapping Division of Tailte Éireann Licence number CYAL50351092.

Níl sna teorainneacha ar na léarscáileanna ach nod garshuíomhach ginearálta. Féadfar athbhreithnithe a déanamh ar theorainneacha na gceantar comharthaithe. © Folaíonn sé rannán Náisiúnta Mapála de shonraí Tailte Éireann
arna atáirgeadh faoin rannán mapála Náisiúnta d'uimhir cheadúnais Táilte Éireann CYAL50351092



**Map version 1
Date: March 2024**