

National Parks and Wildlife Service

Conservation Objectives Series

Blackwater Estuary SPA 004028



An Roinn
Ealaíon, Oidhreachta agus Gaeltachta
Department of
Arts, Heritage and the Gaeltacht



**National Parks and Wildlife Service,
Department of Arts, Heritage and the Gaeltacht,
7 Ely Place, Dublin 2, Ireland.**

**Web: www.npws.ie
E-mail: nature.conservation@ahg.gov.ie**

Citation:

NPWS (2012) Conservation Objectives: Blackwater Estuary SPA 004028. Version 1.0. National Parks and Wildlife Service, Department of Arts, Heritage and the Gaeltacht.

**Series Editors: Rebecca Jeffrey & Naomi Kingston
ISSN 2009-4086**

Introduction

The overall aim of the Habitats Directive is to maintain or restore the favourable conservation status of habitats and species of community interest. These habitats and species are listed in the Habitats and Birds Directives and Special Areas of Conservation and Special Protection Areas are designated to afford protection to the most vulnerable of them. These two designations are collectively known as the Natura 2000 network.

European and national legislation places a collective obligation on Ireland and its citizens to maintain habitats and species in the Natura 2000 network at favourable conservation condition. The Government and its agencies are responsible for the implementation and enforcement of regulations that will ensure the ecological integrity of these sites.

A site-specific conservation objective aims to define favourable conservation condition for a particular habitat or species at that site.

The maintenance of habitats and species within Natura 2000 sites at favourable conservation condition will contribute to the overall maintenance of favourable conservation status of those habitats and species at a national level.

Favourable conservation status of a habitat is achieved when:

- its natural range, and area it covers within that range, are stable or increasing, and
- the specific structure and functions which are necessary for its long-term maintenance exist and are likely to continue to exist for the foreseeable future, and
- the conservation status of its typical species is favourable.

The favourable conservation status of a species is achieved when:

- population dynamics data on the species concerned indicate that it is maintaining itself on a long-term basis as a viable component of its natural habitats, and
- the natural range of the species is neither being reduced nor is likely to be reduced for the foreseeable future, and
- there is, and will probably continue to be, a sufficiently large habitat to maintain its populations on a long-term basis.

Notes/Guidelines:

1. The targets given in these conservation objectives are based on best available information at the time of writing. As more information becomes available, targets for attributes may change. These will be updated periodically, as necessary.
2. An appropriate assessment based on these conservation objectives will remain valid even if the targets are subsequently updated, providing they were the most recent objectives available when the assessment was carried out. It is essential that the date and version are included when objectives are cited.
3. Assessments cannot consider an attribute in isolation from the others listed for that habitat or species, or for other habitats and species listed for that site. A plan or project with an apparently small impact on one attribute may have a significant impact on another.
4. Please note that the maps included in this document do not necessarily show the entire extent of the habitats and species for which the site is listed. This should be borne in mind when appropriate assessments are being carried out.
5. When using these objectives, it is essential that the relevant backing/supporting documents are consulted, particularly where instructed in the targets or notes for a particular attribute.

Qualifying Interests

** indicates a priority habitat under the Habitats Directive*

004028 Blackwater Estuary SPA

A050	Wigeon <i>Anas penelope</i>	wintering
A140	Golden Plover <i>Pluvialis apricaria</i>	wintering
A142	Lapwing <i>Vanellus vanellus</i>	wintering
A149	Dunlin <i>Calidris alpina</i>	wintering
A156	Black-tailed Godwit <i>Limosa limosa</i>	wintering
A157	Bar-tailed Godwit <i>Limosa lapponica</i>	wintering
A160	Curlew <i>Numenius arquata</i>	wintering
A162	Redshank <i>Tringa totanus</i>	wintering
A999	Wetlands	

Please note that this SPA overlaps with the Blackwater River (Cork/Waterford) SAC (002170). See map 2. The conservation objectives for this site should be used in conjunction with those for the overlapping site as appropriate.

Supporting documents, relevant reports & publications (listed by date)

Supporting documents, NPWS reports and publications are available for download from: www.npws.ie/Publications

Title: Blackwater Estuary SPA (004028): Conservation objectives supporting document [Version 1]
Year: 2012
Author: NPWS
Series: Unpublished Report to NPWS

A050 Wigeon *Anas penelope*

To maintain the favourable conservation condition of Wigeon in Blackwater Estuary SPA, which is defined by the following list of attributes and targets:

Attribute	Measure	Target	Notes
Population trend	Percentage change	Long term population trend stable or increasing	Waterbird population trends are presented in part four of the conservation objectives supporting document
Distribution	Range, timing and intensity of use of areas	There should be no significant decrease in the range, timing or intensity of use of areas by Wigeon, other than that occurring from natural patterns of variation	As determined by regular low tide and other waterbird surveys. Waterbird distribution from the 2009/2010 waterbird survey programme is discussed in part five of the conservation objectives supporting document

A140 Golden Plover *Pluvialis apricaria*

To maintain the favourable conservation condition of Golden Plover in Blackwater Estuary SPA, which is defined by the following list of attributes and targets:

Attribute	Measure	Target	Notes
Population trend	Percentage change	Long term population trend stable or increasing	Waterbird population trends are presented in part four of the conservation objectives supporting document
Distribution	Range, timing and intensity of use of areas	There should be no significant decrease in the range, timing or intensity of use of areas by Golden Plover, other than that occurring from natural patterns of variation	As determined by regular low tide and other waterbird surveys. Waterbird distribution from the 2009/2010 waterbird survey programme is discussed in part five of the conservation objectives supporting document

A142 Lapwing *Vanellus vanellus*

To maintain the favourable conservation condition of Lapwing in Blackwater Estuary SPA, which is defined by the following list of attributes and targets:

Attribute	Measure	Target	Notes
Population trend	Percentage change	Long term population trend stable or increasing	Waterbird population trends are presented in part four of the conservation objectives supporting document
Distribution	Range, timing and intensity of use of areas	There should be no significant decrease in the range, timing or intensity of use of areas by Lapwing, other than that occurring from natural patterns of variation	As determined by regular low tide and other waterbird surveys. Waterbird distribution from the 2009/2010 waterbird survey programme is discussed in part five of the conservation objectives supporting document

A149 Dunlin *Calidris alpina*

To maintain the favourable conservation condition of Dunlin in Blackwater Estuary SPA, which is defined by the following list of attributes and targets:

Attribute	Measure	Target	Notes
Population trend	Percentage change	Long term population trend stable or increasing	Waterbird population trends are presented in part four of the conservation objectives supporting document
Distribution	Range, timing and intensity of use of areas	There should be no significant decrease in the range, timing or intensity of use of areas by Dunlin, other than that occurring from natural patterns of variation	As determined by regular low tide and other waterbird surveys. Waterbird distribution from the 2009/2010 waterbird survey programme is discussed in part five of the conservation objectives supporting document

A156 Black-tailed Godwit *Limosa limosa*

To maintain the favourable conservation condition of Black-tailed Godwit in Blackwater Estuary SPA, which is defined by the following list of attributes and targets:

Attribute	Measure	Target	Notes
Population trend	Percentage change	Long term population trend stable or increasing	Waterbird population trends are presented in part four of the conservation objectives supporting document
Distribution	Range, timing and intensity of use of areas	There should be no significant decrease in the range, timing or intensity of use of areas by Black-tailed Godwit, other than that occurring from natural patterns of variation	As determined by regular low tide and other waterbird surveys. Waterbird distribution from the 2009/2010 waterbird survey programme is discussed in part five of the conservation objectives supporting document

A157 Bar-tailed Godwit *Limosa lapponica*

To maintain the favourable conservation condition of Bar-tailed Godwit in Blackwater Estuary SPA, which is defined by the following list of attributes and targets:

Attribute	Measure	Target	Notes
Population trend	Percentage change	Long term population trend stable or increasing	Waterbird population trends are presented in part four of the conservation objectives supporting document
Distribution	Range, timing and intensity of use of areas	There should be no significant decrease in the range, timing or intensity of use of areas by Bar-tailed Godwit, other than that occurring from natural patterns of variation	As determined by regular low tide and other waterbird surveys. Waterbird distribution from the 2009/2010 waterbird survey programme is discussed in part five of the conservation objectives supporting document

A160 Curlew *Numenius arquata*

To maintain the favourable conservation condition of Curlew in Blackwater Estuary SPA, which is defined by the following list of attributes and targets:

Attribute	Measure	Target	Notes
Population trend	Percentage change	Long term population trend stable or increasing	Waterbird population trends are presented in part four of the conservation objectives supporting document
Distribution	Range, timing and intensity of use of areas	There should be no significant decrease in the range, timing or intensity of use of areas by Curlew, other than that occurring from natural patterns of variation	As determined by regular low tide and other waterbird surveys. Waterbird distribution from the 2009/2010 waterbird survey programme is discussed in part five of the conservation objectives supporting document

A162 Redshank *Tringa totanus*

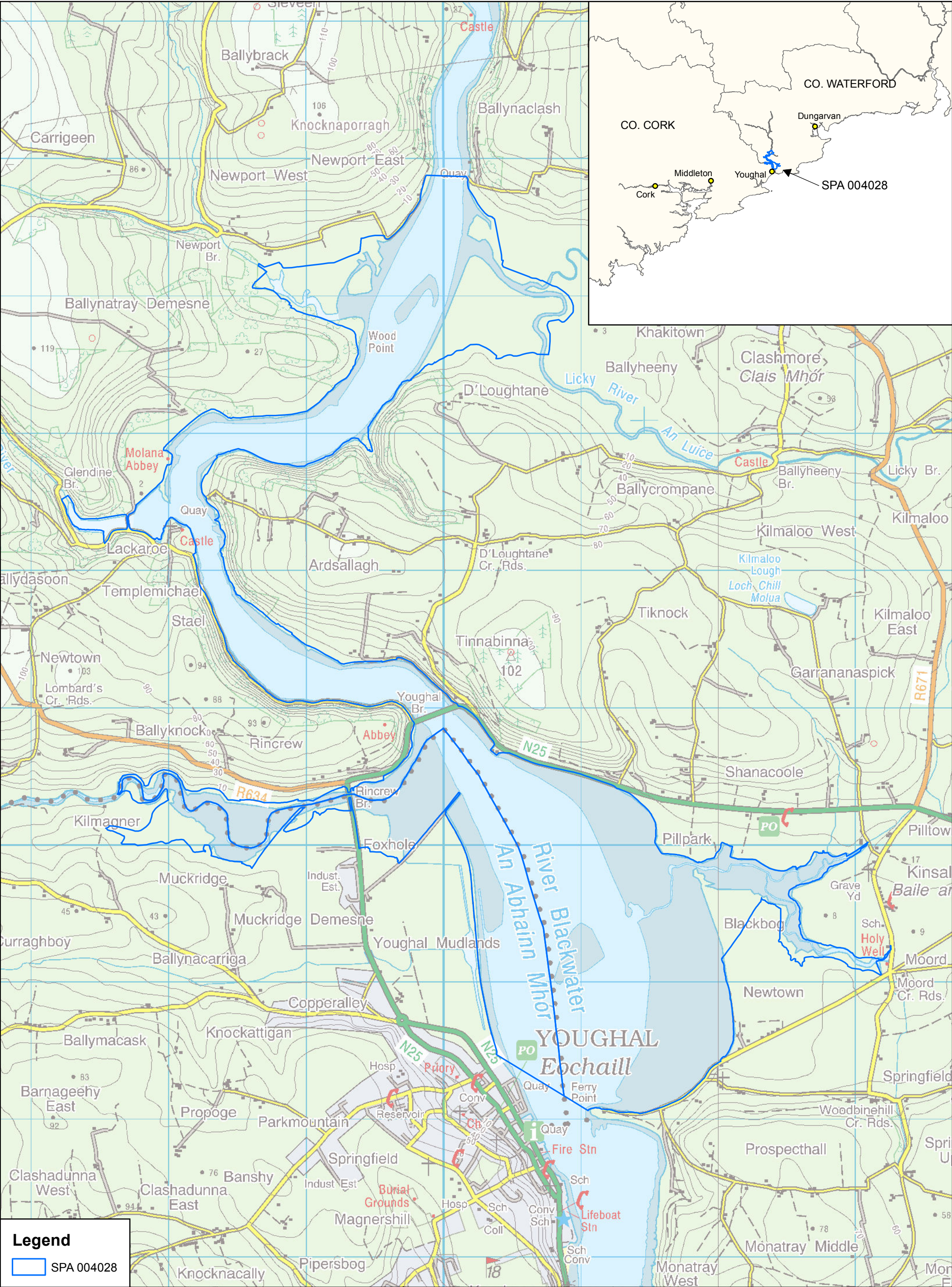
To maintain the favourable conservation condition of Redshank in Blackwater Estuary SPA, which is defined by the following list of attributes and targets:

Attribute	Measure	Target	Notes
Population trend	Percentage change	Long term population trend stable or increasing	Waterbird population trends are presented in part four of the conservation objectives supporting document
Distribution	Range, timing and intensity of use of areas	There should be no significant decrease in the range, timing or intensity of use of areas by Redshank, other than that occurring from natural patterns of variation	As determined by regular low tide and other waterbird surveys. Waterbird distribution from the 2009/2010 waterbird survey programme is discussed in part five of the conservation objectives supporting document

A999 Wetlands

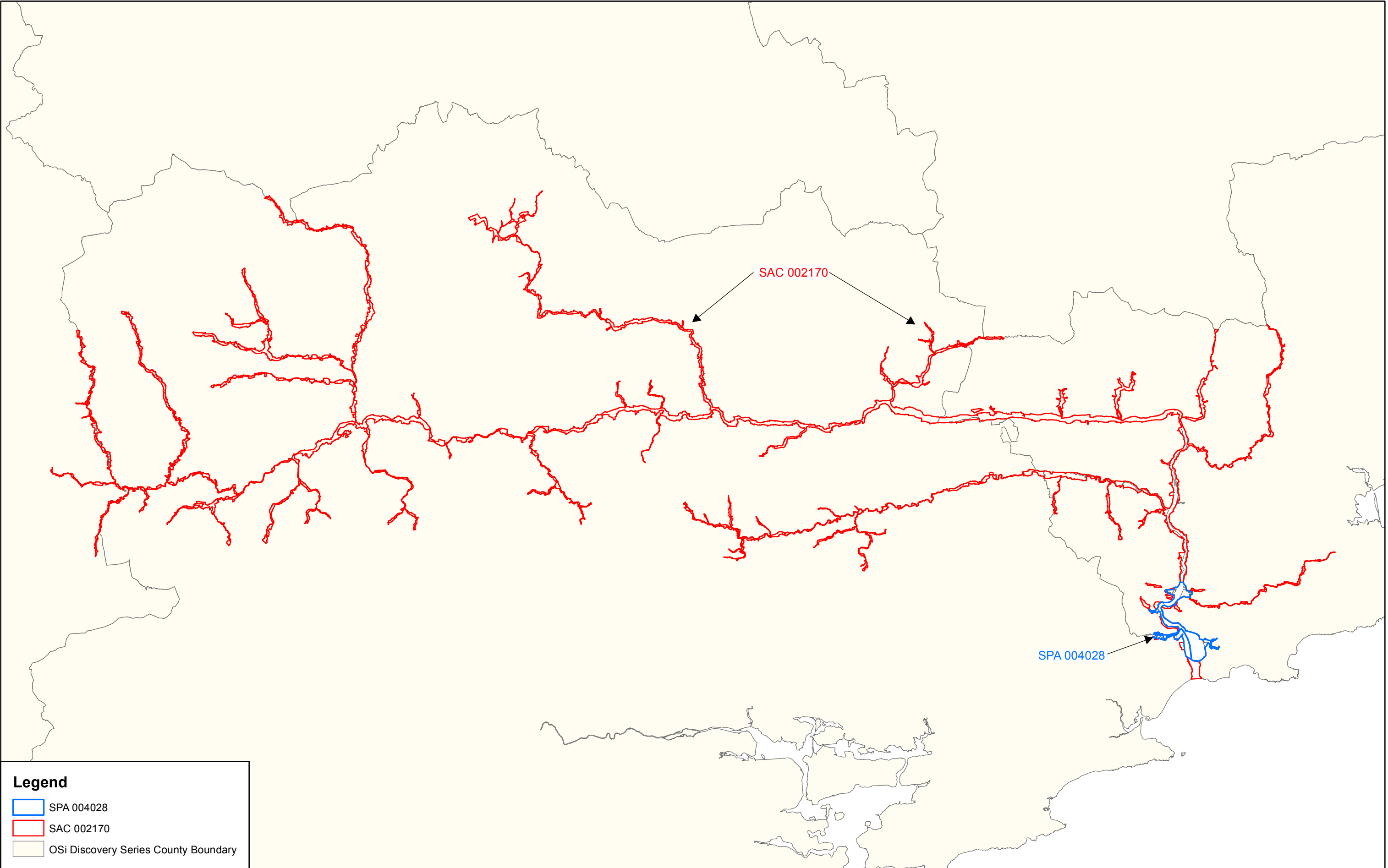
To maintain the favourable conservation condition of the wetland habitat in Blackwater Estuary SPA as a resource for the regularly-occurring migratory waterbirds that utilise it. This is defined by the following attribute and target:

Attribute	Measure	Target	Notes
Wetland habitat	Area (ha)	The permanent area occupied by the wetland habitat should be stable and not significantly less than the area of 871ha, other than that occurring from natural patterns of variation	The wetland habitat area was estimated as 871ha using OSi data and relevant orthophotographs. For further information see part three of the conservation objectives supporting document




Legend

SPA 004028



Legend

- SPA 004028
- SAC 002170
- OSi Discovery Series County Boundary

 **An Roinn Ealaíon, Oidhreachta agus Gaeltachta**
Department of Arts, Heritage and the Gaeltacht

MAP 2:
BLACKWATER ESTUARY SPA
CONSERVATION OBJECTIVES
ADJOINING/OVERLAPPING
DESIGNATIONS

Map to be read in conjunction with the NPWS Conservation Objectives Document.

SITE CODE: SPA 004028 CO.CORK; version 1.04, CO.WATERFORD; version 1.06
SAC 002170 CO. CORK; version 1.15, CO. KERRY; version 1.04, CO. TIPPERARY; version 1, CO. WATERFORD; version 1.06

0 5 10 15 20 km

The mapped boundaries are of an indicative and general nature only. Boundaries of designated areas are subject to revision. Reproduced from Ordnance Survey material by permission of the Government (Permit number EN 0059208).
Níl sna teorainneacha ar na léarscáileanna ach nod garshuíomhach ginearálta. Féadfar athbheithnithe a déanamh ar theorainneacha na gceantar comharthaithe. Macasamhail d'ábhar na Suirbhéarachta Ordonáis le chead ón Rialtas (Ceadúnas Uimh. EN 0059208)


Map Version 1
Date: May 2012