

# National Parks and Wildlife Service

---

## *Conservation Objectives Series*

---

Tramore Back Strand SPA 004027



*An Roinn  
Ealaíon, Oidhreachta agus Gaeltachta*  

---

*Department of  
Arts, Heritage and the Gaeltacht*



**National Parks and Wildlife Service,  
Department of Arts, Heritage and the Gaeltacht,  
7 Ely Place, Dublin 2, Ireland.  
Web: [www.npws.ie](http://www.npws.ie)  
E-mail: [nature.conservation@ahg.gov.ie](mailto:nature.conservation@ahg.gov.ie)**

**Citation:**

**NPWS (2013) Conservation Objectives: Tramore Back Strand SPA 004027.  
Version 1. National Parks and Wildlife Service, Department of Arts, Heritage  
and the Gaeltacht.**

**Series Editor: Rebecca Jeffrey  
ISSN 2009-4086**

## Introduction

The overall aim of the Habitats Directive is to maintain or restore the favourable conservation status of habitats and species of community interest. These habitats and species are listed in the Habitats and Birds Directives and Special Areas of Conservation and Special Protection Areas are designated to afford protection to the most vulnerable of them. These two designations are collectively known as the Natura 2000 network.

European and national legislation places a collective obligation on Ireland and its citizens to maintain habitats and species in the Natura 2000 network at favourable conservation condition. The Government and its agencies are responsible for the implementation and enforcement of regulations that will ensure the ecological integrity of these sites.

A site-specific conservation objective aims to define favourable conservation condition for a particular habitat or species at that site.

The maintenance of habitats and species within Natura 2000 sites at favourable conservation condition will contribute to the overall maintenance of favourable conservation status of those habitats and species at a national level.

Favourable conservation status of a habitat is achieved when:

- its natural range, and area it covers within that range, are stable or increasing, and
- the specific structure and functions which are necessary for its long-term maintenance exist and are likely to continue to exist for the foreseeable future, and
- the conservation status of its typical species is favourable.

The favourable conservation status of a species is achieved when:

- population dynamics data on the species concerned indicate that it is maintaining itself on a long-term basis as a viable component of its natural habitats, and
- the natural range of the species is neither being reduced nor is likely to be reduced for the foreseeable future, and
- there is, and will probably continue to be, a sufficiently large habitat to maintain its populations on a long-term basis.

### Notes/Guidelines:

1. The targets given in these conservation objectives are based on best available information at the time of writing. As more information becomes available, targets for attributes may change. These will be updated periodically, as necessary.
2. An appropriate assessment based on these conservation objectives will remain valid even if the targets are subsequently updated, providing they were the most recent objectives available when the assessment was carried out. It is essential that the date and version are included when objectives are cited.
3. Assessments cannot consider an attribute in isolation from the others listed for that habitat or species, or for other habitats and species listed for that site. A plan or project with an apparently small impact on one attribute may have a significant impact on another.
4. Please note that the maps included in this document do not necessarily show the entire extent of the habitats and species for which the site is listed. This should be borne in mind when appropriate assessments are being carried out.
5. When using these objectives, it is essential that the relevant backing/supporting documents are consulted, particularly where instructed in the targets or notes for a particular attribute.

## Qualifying Interests

\* indicates a priority habitat under the Habitats Directive

---

004027	Tramore Back Strand SPA
--------	-------------------------

---

A046	Brent Goose <i>Branta bernicla hrota</i>
A140	Golden Plover <i>Pluvialis apricaria</i>
A141	Grey Plover <i>Pluvialis squatarola</i>
A142	Lapwing <i>Vanellus vanellus</i>
A149	Dunlin <i>Calidris alpina alpina</i>
A156	Black-tailed Godwit <i>Limosa limosa</i>
A157	Bar-tailed Godwit <i>Limosa lapponica</i>
A160	Curlew <i>Numenius arquata</i>
A999	Wetlands

**Please note that this SPA overlaps with Tramore Dunes and Backstrand SAC (000671). See map 2. The conservation objectives for this site should be used in conjunction with those for the overlapping site as appropriate.**

## Supporting documents, relevant reports & publications

*Supporting documents, NPWS reports and publications are available for download from: [www.npws.ie/Publications](http://www.npws.ie/Publications)*

### NPWS Documents

**Year :** 2013  
**Title :** Tramore Back Strand SPA (site code 4027) Conservation objectives supporting document V1  
**Author :** NPWS  
**Series :** Conservation objectives supporting document

---

**A046                      Brent Goose *Branta bernicla hrota***

**To maintain the favourable conservation condition of Light-bellied Brent Goose in Tramore Back Strand SPA, which is defined by the following list of attributes and targets:**

<b>Attribute</b>	<b>Measure</b>	<b>Target</b>	<b>Notes</b>
Population trend	Percentage change	Long term population trend stable or increasing	Population trends are presented in part four of the conservation objectives supporting document
Distribution	Range, timing and intensity of use of areas	No significant decrease in the range, timing of intensity of use of areas by light-bellied brent goose, other than that occurring from natural patterns of variation	Waterbird distribution from the 2010/2011 and 2011/2012 waterbird survey programmes is discussed in part five of the conservation objectives supporting document

## Conservation Objectives for : Tramore Back Strand SPA [004027]

### A140 Golden Plover *Pluvialis apricaria*

**To maintain the favourable conservation condition of Golden Plover in Tramore Back Strand SPA, which is defined by the following list of attributes and targets:**

Attribute	Measure	Target	Notes
Population trend	Percentage change	Long term population trend stable or increasing	Population trends are presented in part four of the conservation objectives supporting document
Distribution	Range, timing and intensity of use of areas	No significant decrease in the range, timing or intensity of use of areas by golden plover, other than that occurring from natural patterns of variation	Waterbird distribution from the 2010/2011 and 2011/2012 waterbird survey programmes is discussed in part five of the conservation objectives supporting document

## Conservation Objectives for : Tramore Back Strand SPA [004027]

### A141 Grey Plover *Pluvialis squatarola*

**To maintain the favourable conservation condition of Grey Plover in Tramore Back Strand SPA, which is defined by the following list of attributes and targets:**

Attribute	Measure	Target	Notes
Population trend	Percentage change	Long term population trend stable or increasing	Population trends are presented in part four of the conservation objectives supporting document
Distribution	Range, timing and intensity of use of areas	No significant decrease in the range, timing or intensity of use of areas by grey plover, other than that occurring from natural patterns of variation	Waterbird distribution from the 2010/2011 and 2011/2012 waterbird survey programmes is discussed in part five of the conservation objectives supporting document



**A142 Lapwing *Vanellus vanellus***

**To maintain the favourable conservation condition of Lapwing in Tramore Back Strand SPA, which is defined by the following list of attributes and targets:**

<b>Attribute</b>	<b>Measure</b>	<b>Target</b>	<b>Notes</b>
Population trend	Percentage change	Long term population trend stable or increasing	Population trends are presented in part four of the conservation objectives supporting document
Distribution	Range, timing and intensity of use of areas	No significant decrease in the range, timing or intensity of use of areas by lapwing, other than that occurring from natural patterns of variation	Waterbird distribution from the 2010/2011 and 2011/2012 waterbird survey programmes is discussed in part five of the conservation objectives supporting document

## Conservation Objectives for : Tramore Back Strand SPA [004027]

### A149 Dunlin *Calidris alpina alpina*

**To maintain the favourable conservation condition of Dunlin in Tramore Back Strand SPA, which is defined by the following list of attributes and targets:**

Attribute	Measure	Target	Notes
Population trend	Percentage change	Long term population trend stable or increasing	Population trends are presented in part four of the conservation objectives supporting document
Distribution	Range, timing and intensity of use of areas	No significant decrease in the range, timing or intensity of use of areas by dunlin, other than that occurring from natural patterns of variation	Waterbird distribution from the 2010/2011 and 2011/2012 waterbird survey programme is discussed in part five of the conservation objectives supporting document

**A156 Black-tailed Godwit *Limosa limosa***

**To maintain the favourable conservation condition of Black-tailed Godwit in Tramore Back Strand SPA, which is defined by the following list of attributes and targets:**

<b>Attribute</b>	<b>Measure</b>	<b>Target</b>	<b>Notes</b>
Population trend	Percentage change	Long term population trend stable or increasing	Population trends are presented in part four of the conservation objectives supporting document
Distribution	Range, timing and intensity of use of areas	No significant decrease in the range, timing or intensity of use of areas by black-tailed godwit, other than that occurring from natural patterns of variation	Waterbird distribution from the 2010/2011 and 2011/2012 waterbird survey programme is discussed in part five of the conservation objectives supporting document

**A157 Bar-tailed Godwit *Limosa lapponica***

**To maintain the favourable conservation condition of Bar-tailed Godwit in Tramore Back Strand SPA, which is defined by the following list of attributes and targets:**

<b>Attribute</b>	<b>Measure</b>	<b>Target</b>	<b>Notes</b>
Population trend	Percentage change	Long term population trend stable or increasing	Population trends are presented in part four of the conservation objectives supporting document
Distribution	Range, timing and intensity of use of areas	No significant decrease in the range, timing or intensity of use of areas by bar-tailed godwit, other than that occurring from natural patterns of variation	Waterbird distribution from the 2010/2011 and 2011/2012 waterbird survey programmes is discussed in part five of the conservation objectives supporting document

## Conservation Objectives for : Tramore Back Strand SPA [004027]

### A160 Curlew *Numenius arquata*

**To maintain the favourable conservation condition of Curlew in Tramore Back Strand SPA, which is defined by the following list of attributes and targets:**

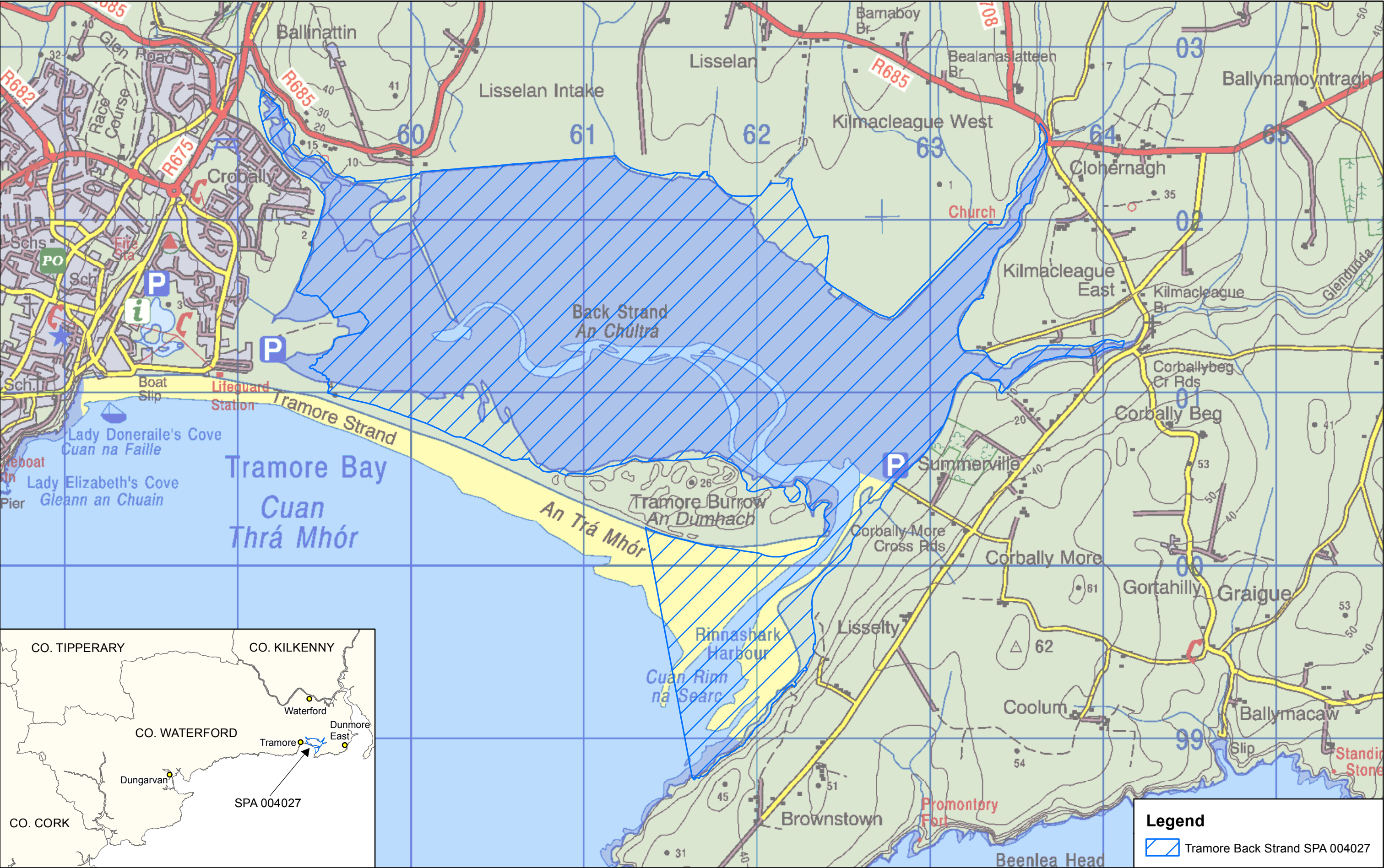
Attribute	Measure	Target	Notes
Population trend	Percentage change	Long term population trend stable or increasing	Population trends are presented in part four of the conservation objectives supporting document
Distribution	Range, timing and intensity of use of areas	No significant decrease in the range, timing or intensity of use of areas by curlew, other than that occurring from natural patterns of variation	Waterbird distribution from the 2010/2011 and 2011/2012 waterbird survey programmes is discussed in part five of the conservation objectives supporting document

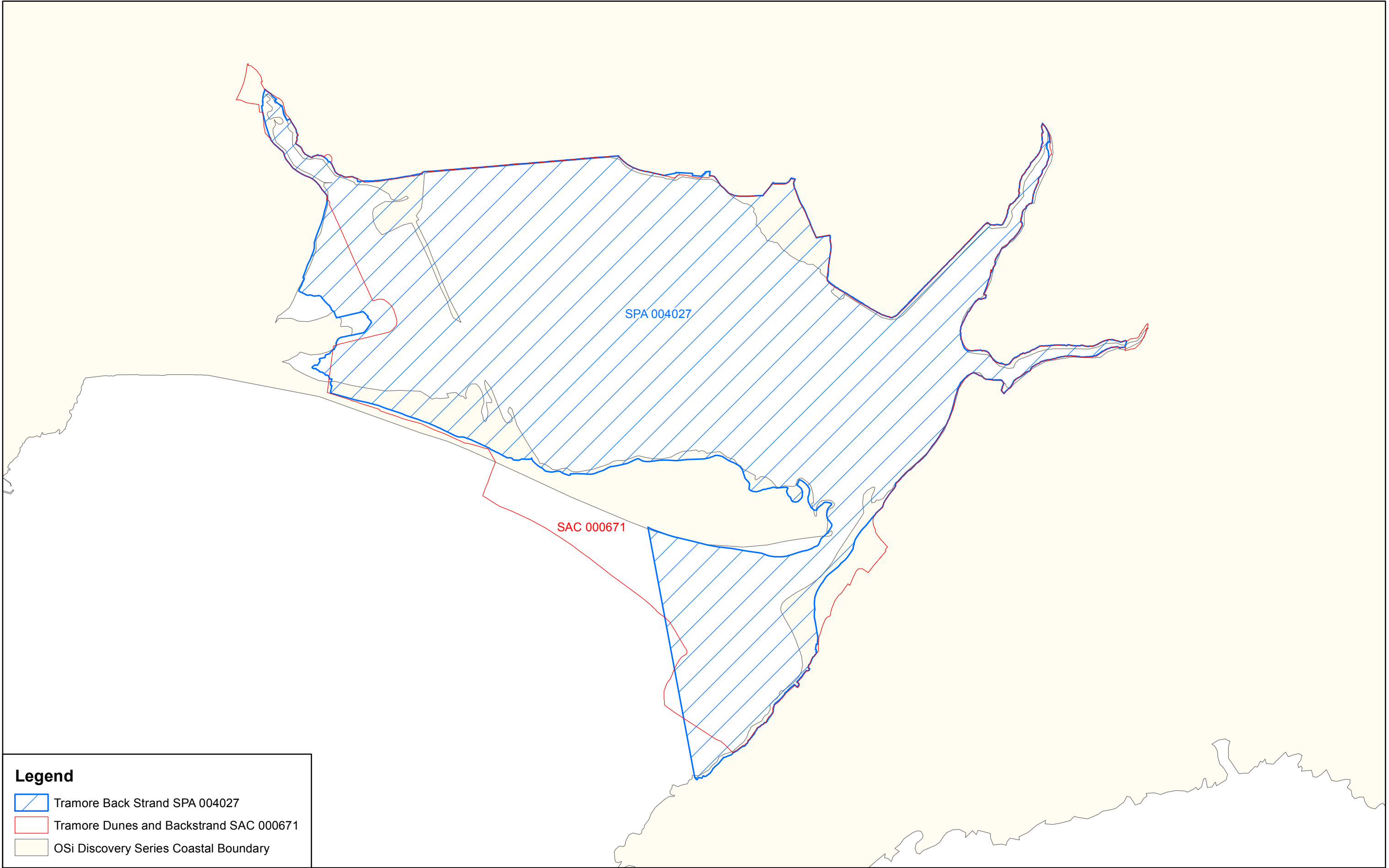
## Conservation Objectives for : Tramore Back Strand SPA [004027]

### A999 Wetlands




**To maintain the favourable conservation condition of wetland habitat in Tramore Back Strand SPA as a resource for the regularly occurring migratory waterbirds that utilise it. This is defined by the following attribute and target:**


Attribute	Measure	Target	Notes
Habitat area	Hectares	The permanent area occupied by the wetland habitat should be stable and not significantly less than the area of 676 hectares, other than that occurring from natural patterns of variation	The wetland habitat area was estimated as 676ha using OSi data and relevant orthophotographs. For further information see part three of the conservation objectives supporting document





**Legend**

-  Tramore Back Strand SPA 004027
-  Tramore Dunes and Backstrand SAC 000671
-  OSi Discovery Series Coastal Boundary




*An Roinn  
Ealaíon, Oidhreacht agus Gaeltachta*  
*Department of  
Arts, Heritage and the Gaeltacht*

**MAP 2:  
TRAMORE BACK STRAND SPA  
CONSERVATION OBJECTIVES  
ADJOINING / OVERLAPPING  
DESIGNATIONS**

Map to be read in conjunction with the NPWS Conservation Objectives Document.

**SITE CODE: SPA 004027; version 1.02  
SAC 000671; version 3  
County Waterford**

0    0.25    0.5    0.75    1 km



The mapped boundaries are of an indicative and general nature only. Boundaries of designated areas are subject to revision. Reproduced from Ordnance Survey material by permission of the Government (Permit number EN 0059212).

Níl sna teorainneacha ar na léarscáileanna ach nod garshuíomhach ginearálta. Féadfar athbhreithnithe a déanamh ar theorainneacha na gceantar comharthaithe. Macasamhail d'ábhar na Suirbhéarachta Ordonáis le chead ón Rialtas (Ceadúnas Uimh. EN 0059212)



**Map Version 1  
Date: Aug 2013**