

# National Parks and Wildlife Service

---

## *Conservation Objectives Series*

---

Rogerstown Estuary SPA 004015



*An Roinn  
Ealaíon, Oidhreachta agus Gaeltachta*  

---

*Department of  
Arts, Heritage and the Gaeltacht*



**National Parks and Wildlife Service,  
Department of Arts, Heritage and the Gaeltacht,  
7 Ely Place, Dublin 2, Ireland.  
Web: [www.npws.ie](http://www.npws.ie)  
E-mail: [nature.conservation@ahg.gov.ie](mailto:nature.conservation@ahg.gov.ie)**

**Citation:**

**NPWS (2013) Conservation Objectives: Rogerstown Estuary SPA 004015.  
Version 1. National Parks and Wildlife Service, Department of Arts, Heritage  
and the Gaeltacht.**

**Series Editor: Rebecca Jeffrey  
ISSN 2009-4086**

## Introduction

The overall aim of the Habitats Directive is to maintain or restore the favourable conservation status of habitats and species of community interest. These habitats and species are listed in the Habitats and Birds Directives and Special Areas of Conservation and Special Protection Areas are designated to afford protection to the most vulnerable of them. These two designations are collectively known as the Natura 2000 network.

European and national legislation places a collective obligation on Ireland and its citizens to maintain habitats and species in the Natura 2000 network at favourable conservation condition. The Government and its agencies are responsible for the implementation and enforcement of regulations that will ensure the ecological integrity of these sites.

A site-specific conservation objective aims to define favourable conservation condition for a particular habitat or species at that site.

The maintenance of habitats and species within Natura 2000 sites at favourable conservation condition will contribute to the overall maintenance of favourable conservation status of those habitats and species at a national level.

Favourable conservation status of a habitat is achieved when:

- its natural range, and area it covers within that range, are stable or increasing, and
- the specific structure and functions which are necessary for its long-term maintenance exist and are likely to continue to exist for the foreseeable future, and
- the conservation status of its typical species is favourable.

The favourable conservation status of a species is achieved when:

- population dynamics data on the species concerned indicate that it is maintaining itself on a long-term basis as a viable component of its natural habitats, and
- the natural range of the species is neither being reduced nor is likely to be reduced for the foreseeable future, and
- there is, and will probably continue to be, a sufficiently large habitat to maintain its populations on a long-term basis.

### Notes/Guidelines:

1. The targets given in these conservation objectives are based on best available information at the time of writing. As more information becomes available, targets for attributes may change. These will be updated periodically, as necessary.
2. An appropriate assessment based on these conservation objectives will remain valid even if the targets are subsequently updated, providing they were the most recent objectives available when the assessment was carried out. It is essential that the date and version are included when objectives are cited.
3. Assessments cannot consider an attribute in isolation from the others listed for that habitat or species, or for other habitats and species listed for that site. A plan or project with an apparently small impact on one attribute may have a significant impact on another.
4. Please note that the maps included in this document do not necessarily show the entire extent of the habitats and species for which the site is listed. This should be borne in mind when appropriate assessments are being carried out.
5. When using these objectives, it is essential that the relevant backing/supporting documents are consulted, particularly where instructed in the targets or notes for a particular attribute.

## Qualifying Interests

*\* indicates a priority habitat under the Habitats Directive*

---

### 004015 Rogerstown Estuary SPA

---

A043	Greylag Goose <i>Anser anser</i>
A046	Brent Goose <i>Branta bernicla hrota</i>
A048	Shelduck <i>Tadorna tadorna</i>
A056	Shoveler <i>Anas clypeata</i>
A130	Oystercatcher <i>Haematopus ostralegus</i>
A137	Ringed Plover <i>Charadrius hiaticula</i>
A141	Grey Plover <i>Pluvialis squatarola</i>
A143	Knot <i>Calidris canutus</i>
A149	Dunlin <i>Calidris alpina alpina</i>
A156	Black-tailed Godwit <i>Limosa limosa</i>
A162	Redshank <i>Tringa totanus</i>
A999	Wetlands

**Please note that this SPA overlaps with Rogerstown Estuary SAC (000208). See map 2. The conservation objectives for this site should be used in conjunction with those for the overlapping site as appropriate.**

## Supporting documents, relevant reports & publications

*Supporting documents, NPWS reports and publications are available for download from: [www.npws.ie/Publications](http://www.npws.ie/Publications)*

### NPWS Documents

**Year :** 2013  
**Title :** Rogerstown Estuary SPA (site code 4015) Conservation Objectives Supporting Document V1  
**Author :** NPWS  
**Series :** Conservation objectives supporting document

---

**A043                      Greylag Goose *Anser anser***

**To maintain the favourable conservation condition of Greylag Goose in Rogerstown Estuary SPA, which is defined by the following list of attributes and targets:**

<b>Attribute</b>	<b>Measure</b>	<b>Target</b>	<b>Notes</b>
Population trend	Percentage change	Long term population trend stable or increasing	Waterbird population trends are presented in part four of the conservation objectives supporting document
Distribution	Number and range of areas used by waterbirds	No significant decrease in the range, timing or intensity of use of areas by greylag goose, other than that occurring from natural patterns of variation	Waterbird distribution from the 2011/2012 waterbird survey programme is discussed in part five of the conservation objectives supporting document

**A046                      Brent Goose *Branta bernicla hrota***

**To maintain the favourable conservation condition of Light-bellied Brent Goose in Rogerstown Estuary SPA, which is defined by the following list of attributes and targets:**

<b>Attribute</b>	<b>Measure</b>	<b>Target</b>	<b>Notes</b>
Population trend	Percentage change	Long term population trend stable or increasing	Waterbird population trends are presented in part four of the conservation objectives supporting document
Distribution	Number and range of areas used by waterbirds	No significant decrease in the range, timing and intensity of use of areas by light-bellied brent goose, other than that occurring from natural patterns of variation	Waterbird distribution from the 2011/2012 waterbird survey programme is discussed in part five of the conservation objectives supporting document

**A048                      Shelduck *Tadorna tadorna***

**To maintain the favourable conservation condition of Shelduck in Rogerstown Estuary SPA, which is defined by the following list of attributes and targets:**

<b>Attribute</b>	<b>Measure</b>	<b>Target</b>	<b>Notes</b>
Population trend	Percentage change	Long term population trend stable or increasing	Waterbird population trends are presented in part four of the conservation objectives supporting document
Distribution	Number, range, timing and intensity of areas used by waterbirds	No significant decrease in the range, timing or intensity of use of areas by shelduck, other than that occurring from natural patterns of variation	Waterbird distribution from the 2011/2012 waterbird survey programme is discussed in part five of the conservation objectives supporting document



**A056 Shoveler *Anas clypeata***

**To maintain the favourable conservation condition of Shoveler in Rogerstown Estuary SPA, which is defined by the following list of attributes and targets:**

<b>Attribute</b>	<b>Measure</b>	<b>Target</b>	<b>Notes</b>
Population trend	Percentage change	Long term population trend stable or increasing	Waterbird population trends are presented in part four of the conservation objectives supporting document
Distribution	Number and range of areas used by waterbirds	No significant decrease in the range, timing or intensity of use of areas by shoveler, other than that occurring from natural patterns of variation	Waterbird distribution from the 2011/2012 waterbird survey programme is discussed in part five of the conservation objectives supporting document

**A130                      Oystercatcher *Haematopus ostralegus***

**To maintain the favourable conservation condition of Oystercatcher in Rogerstown Estuary SPA, which is defined by the following list of attributes and targets:**

<b>Attribute</b>	<b>Measure</b>	<b>Target</b>	<b>Notes</b>
Population trend	Percentage change	Long term population trend stable or increasing	Population trends are presented in part four of the conservation objectives supporting document
Distribution	Number, range, timing and intensity of areas used by waterbirds	No significant decrease in the range, timing and intensity of use of areas by oystercatcher, other than that occurring from natural patterns of variation	Waterbird distribution from the 2011/2012 waterbird survey programme is discussed in part four of the conservation objectives supporting document

**A137                      Ringed Plover *Charadrius hiaticula***

**To maintain the favourable conservation condition of Ringed Plover in Rogerstown Estuary SPA, which is defined by the following list of attributes and targets:**

<b>Attribute</b>	<b>Measure</b>	<b>Target</b>	<b>Notes</b>
Population trend	Percentage change	Long term population trend stable or increasing	Population trends are presented in part four of the conservation objectives supporting document
Distribution	Number and range of areas used by waterbirds	No significant decrease in the range, timing or intensity of use of areas by ringed plover, other than that occurring from natural patterns of variation	Waterbird distribution from the 2011/2012 waterbird survey programme is discussed in part five of conservation objectives supporting document

**A141                      Grey Plover *Pluvialis squatarola***

**To maintain the favourable conservation condition of Grey Plover in Rogerstown Estuary SPA, which is defined by the following list of attributes and targets:**

<b>Attribute</b>	<b>Measure</b>	<b>Target</b>	<b>Notes</b>
Population trend	Percentage change	Long term population trend stable or increasing	Population trends are presented in part four of the conservation objectives supporting document
Distribution	Number, range, timing and intensity of use of areas	No significant decrease in the range, timing or intensity of use of areas by grey plover, other than that occurring from natural patterns of variation	Waterbird distribution from the 2011/2012 waterbird survey programme is discussed in part five of the conservation objectives supporting document

**A143                      Knot *Calidris canutus***

**To maintain the favourable conservation condition of Knot in Rogerstown Estuary SPA, which is defined by the following list of attributes and targets:**

<b>Attribute</b>	<b>Measure</b>	<b>Target</b>	<b>Notes</b>
Population trend	Percentage change	Long term population trend stable or increasing	Waterbird population trends are presented in part four of the conservation objectives supporting document
Distribution	Number, range, timing and intensity of use of areas	No significant decrease in the range, timing or intensity of use of areas by knot, other than that occurring from natural patterns of variation	Waterbird distribution from the 2011/2012 waterbird survey programme is discussed in part five of the conservation objectives supporting document

**A149 Dunlin *Calidris alpina alpina***

**To maintain the favourable conservation condition of Dunlin in Rogerstown Estuary SPA, which is defined by the following list of attributes and targets:**

<b>Attribute</b>	<b>Measure</b>	<b>Target</b>	<b>Notes</b>
Population trend	Percentage change	Long term population trend stable or increasing	Population trends are presented in part four of the conservation objectives supporting document
Distribution	Number, range, timing and intensity of use of areas	No significant decrease in the range, timing or intensity of use of areas by dunlin, other than that occurring from natural patterns of variation	Waterbird distribution from the 2011/2012 waterbird survey programme is discussed in part five of the conservation objectives supporting document

**A156 Black-tailed Godwit *Limosa limosa***

**To maintain the favourable conservation condition of Black-tailed Godwit in Rogerstown Estuary SPA, which is defined by the following list of attributes and targets:**

<b>Attribute</b>	<b>Measure</b>	<b>Target</b>	<b>Notes</b>
Population trend	Percentage change	Long term population trend stable or increasing	Population trends are presented in part four of the conservation objectives supporting document
Distribution	Number, range, timing and intensity of use of areas	No significant decrease in the range, timing or intensity of use of areas by black-tailed godwit, other than that occurring from natural patterns of variation	Waterbird distribution from the 2011/2012 waterbird survey programme is discussed in part five of the conservation objectives supporting document

**A162 Redshank *Tringa totanus***

**To maintain the favourable conservation condition of Redshank in Rogerstown Estuary SPA, which is defined by the following list of attributes and targets:**

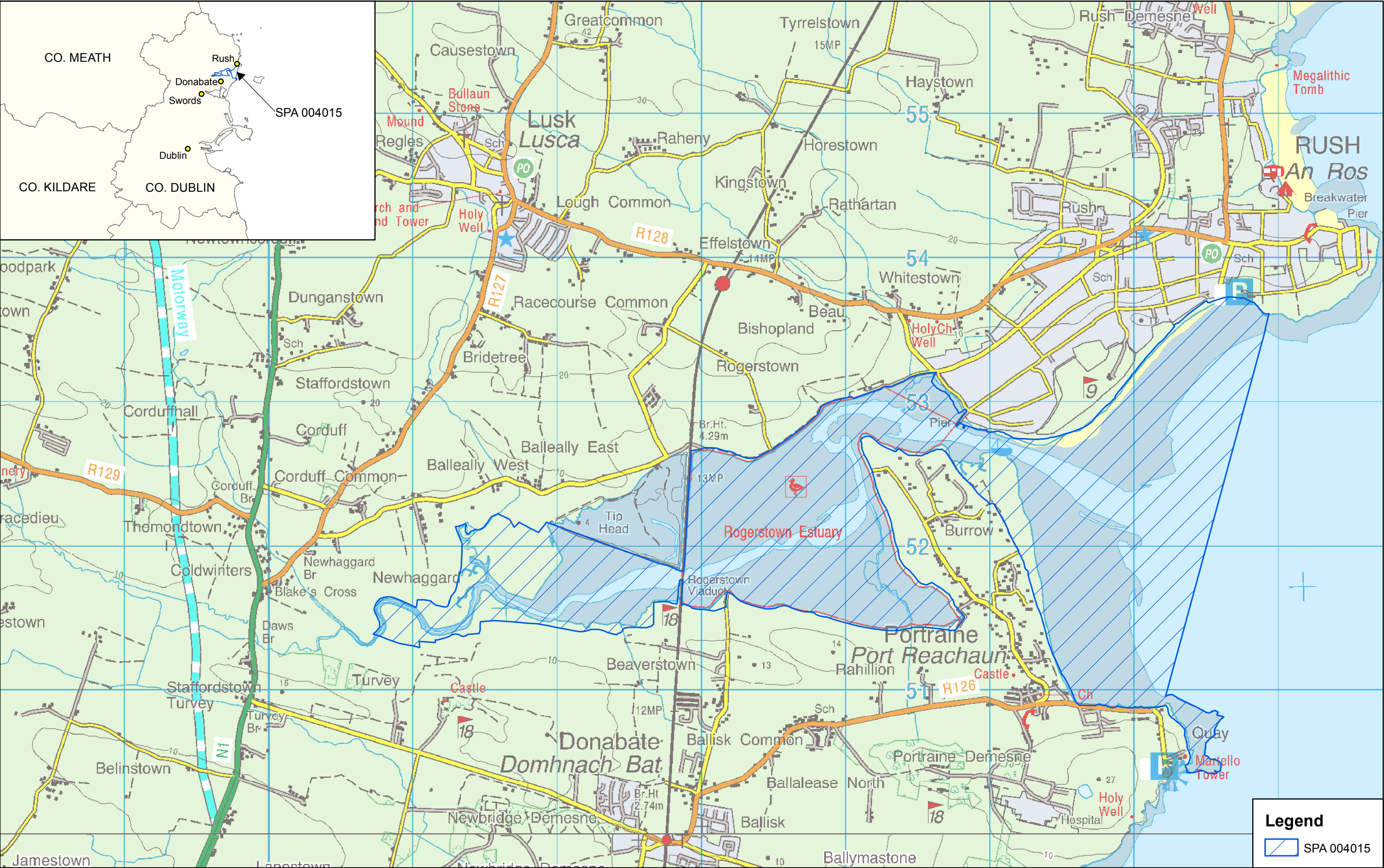
<b>Attribute</b>	<b>Measure</b>	<b>Target</b>	<b>Notes</b>
Population trend	Percentage change	Long term population trend stable or increasing	Population trends are presented in part four of the conservation objectives supporting document
Distribution	Number, range, timing and intensity of use of area	No significant decrease in the range, timing or intensity of use of areas by redshank, other than that occurring from natural patterns of variation	Waterbird distribution from the 2011/2012 waterbird survey programme is discussed in part five of the conservation objectives supporting document

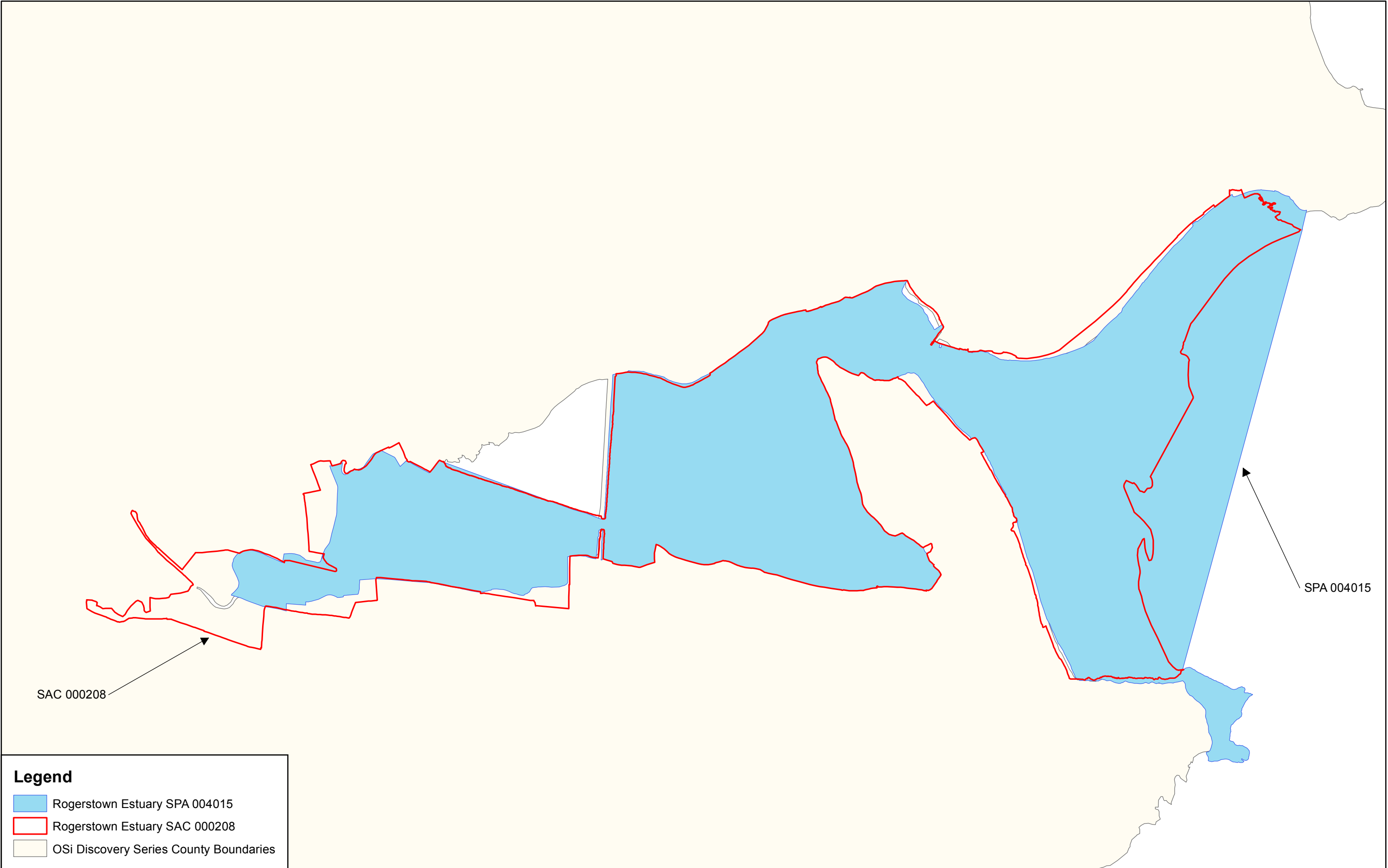


**A999 Wetlands**

**To maintain the favourable conservation condition of wetland habitat in Rogerstown Estuary SPA as a resource for the regularly occurring migratory waterbirds that utilise it. This is defined by the following attribute and target:**


<b>Attribute</b>	<b>Measure</b>	<b>Target</b>	<b>Notes</b>
Habitat area	Hectares	The permanent area occupied by the wetland habitat should be stable and not significantly less than the area of 646 hectares, other than that occurring from natural patterns of variation	The wetland habitat area was estimated as 646ha using OSi data and relevant orthophotographs. For further information see part three of the conservation objectives supporting document





**Legend**

- Rogerstown Estuary SPA 004015
- Rogerstown Estuary SAC 000208
- OSi Discovery Series County Boundaries

 **An Roinn Ealaíon, Oidhreachta agus Gaeltachta**  
Department of Arts, Heritage and the Gaeltacht

**MAP 2:**  
**ROGERSTOWN ESTUARY SPA**  
**CONSERVATION OBJECTIVES**  
**ADJOINING / OVERLAPPING DESIGNATION**

Map to be read in conjunction with the NPWS Conservation Objectives Document.

**SITE CODE: SPA 004015 CO. DUBLIN; version 1.02**  
**SAC 000208 CO. DUBLIN; version 1.02**

0 0.25 0.5 0.75 1 km

The mapped boundaries are of an indicative and general nature only. Boundaries of designated areas are subject to revision. Reproduced from Ordnance Survey material by permission of the Government (Permit number EN 0059212).

Níl sna teorainneacha ar na léarscáileanna ach nod garshuíomhach ginearálta. Féadfar athbheithnithe a déanamh ar theorainneacha na gceantar comharthaithe. Macasamhail d'ábhar na Suirbhéarachta Ordonáis le chead ón Rialtas (Ceadúnas Uimh. EN 0059212)

 **N**

**Map Version 1**  
**Date: May 2013**