

National Parks and Wildlife Service

Conservation Objectives Series

Hovland Mound Province SAC 002328



An Roinn Tithíochta,
Rialtais Áitiúil agus Oidhreacht
Department of Housing,
Local Government and Heritage

**National Parks and Wildlife Service,
Department of Housing, Local Government and Heritage,
90 King Street North, Dublin 7, D07 N7CV, Ireland.
Web: www.npws.ie
E-mail: natureconservation@housing.gov.ie**

Citation:

**NPWS (2022) Conservation Objectives: Hovland Mound Province SAC 002328.
Version 1. National Parks and Wildlife Service, Department of Housing, Local
Government and Heritage.**

**Series Editors: Rebecca Jeffrey and Christina Campbell
ISSN 2009-4086**

Introduction

The overall aim of the Habitats Directive is to maintain or restore the favourable conservation status of habitats and species of community interest. These habitats and species are listed in the Habitats and Birds Directives and Special Areas of Conservation and Special Protection Areas are designated to afford protection to the most vulnerable of them. These two designations are collectively known as the Natura 2000 network.

European and national legislation places a collective obligation on Ireland and its citizens to maintain habitats and species in the Natura 2000 network at favourable conservation condition. The Government and its agencies are responsible for the implementation and enforcement of regulations that will ensure the ecological integrity of these sites.

A site-specific conservation objective aims to define favourable conservation condition for a particular habitat or species at that site.

The maintenance of habitats and species within Natura 2000 sites at favourable conservation condition will contribute to the overall maintenance of favourable conservation status of those habitats and species at a national level.

Favourable conservation status of a habitat is achieved when:

- its natural range, and area it covers within that range, are stable or increasing, and
- the specific structure and functions which are necessary for its long-term maintenance exist and are likely to continue to exist for the foreseeable future, and
- the conservation status of its typical species is favourable.

The favourable conservation status of a species is achieved when:

- population dynamics data on the species concerned indicate that it is maintaining itself on a long-term basis as a viable component of its natural habitats, and
- the natural range of the species is neither being reduced nor is likely to be reduced for the foreseeable future, and
- there is, and will probably continue to be, a sufficiently large habitat to maintain its populations on a long-term basis.

Notes/Guidelines:

1. The targets given in these conservation objectives are based on best available information at the time of writing. As more information becomes available, targets for attributes may change. These will be updated periodically, as necessary.
2. An appropriate assessment based on these conservation objectives will remain valid even if the targets are subsequently updated, providing they were the most recent objectives available when the assessment was carried out. It is essential that the date and version are included when objectives are cited.
3. Assessments cannot consider an attribute in isolation from the others listed for that habitat or species, or for other habitats and species listed for that site. A plan or project with an apparently small impact on one attribute may have a significant impact on another.
4. Please note that the maps included in this document do not necessarily show the entire extent of the habitats and species for which the site is listed. This should be borne in mind when appropriate assessments are being carried out.
5. When using these objectives, it is essential that the relevant backing/supporting documents are consulted, particularly where instructed in the targets or notes for a particular attribute.

Qualifying Interests

** indicates a priority habitat under the Habitats Directive*

002328	Hovland Mound Province SAC
--------	----------------------------

1170	Reefs
------	-------

Supporting documents, relevant reports & publications

Supporting documents, NPWS reports and publications are available for download from: www.npws.ie/Publications

NPWS Documents

Year :	2022
Title :	Hovland Mound Province SAC (site code: 002328) Conservation objectives supporting document - marine habitats V1
Author :	NPWS
Series :	Conservation objectives supporting document
Year :	in prep.
Title :	Reef Habitat in Irish offshore waters – A synthesis of current knowledge
Author :	Forde, J.; Allcock, L.; Grehan, A.
Series :	Irish Wildlife Manuals

Other References

Year :	2002
Title :	Report of the survey in zone 3 of the Irish National Seabed Survey, volume 1: Describing the results and the methods used
Author :	Geological Survey of Ireland (GSI)
Series :	GOTECH, Dublin
Year :	2005
Title :	Growth and erosion of a cold-water coral covered carbonate mound in the northeast Atlantic during the Late Pleistocene and Holocene
Author :	Dorschel, B.; Hebbeln, D.; Rüggeberg, A.; Dullo, W.C.; Freiwald, A.
Series :	Earth and Planetary Science Letters, 233: 33-44
Year :	2007
Title :	Environmental changes and growth history of a cold-water carbonate mound (Propeller Mound, Porcupine Seabight)
Author :	Rüggeberg, A.; Dullo, C.; Dorschel, B.; Hebbeln, D.
Series :	International Journal of Earth Sciences 96: 57-72
Year :	2007
Title :	Morphology and environment of cold-water coral carbonate mounds on the NW European margin
Author :	Wheeler, A.J.; Beyer, A.; Freiwald, A.; de Haas, H.; Huvenne, V.A.I.; Kozachenko, M.; Olu-Le Roy, K.; Opderbecke, J.
Series :	International Journal of Earth Sciences, 96: 37-56
Year :	2010
Title :	Atlas of the deep-water seabed: Ireland
Author :	Dorschel, B.; Wheeler, A.J.; Monteys, X.; Verbruggen, K.
Series :	Springer, Netherlands
Year :	2019
Title :	SEAROVER 2018 Deep Water Reef Habitat & Species Video Analysis Full Report
Author :	La Bianca, G.; Ross, R.; Howell, K.
Series :	Report commissioned by Marine Institute, Rinville, Oranmore, Co. Galway

Spatial data sources

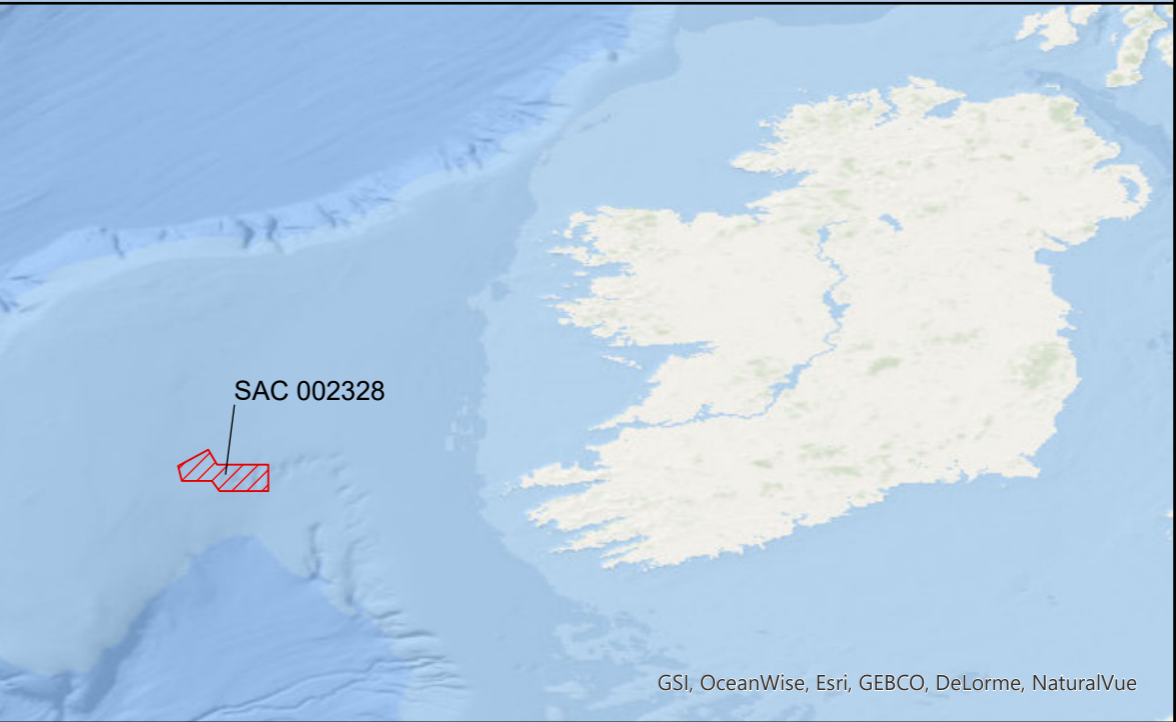
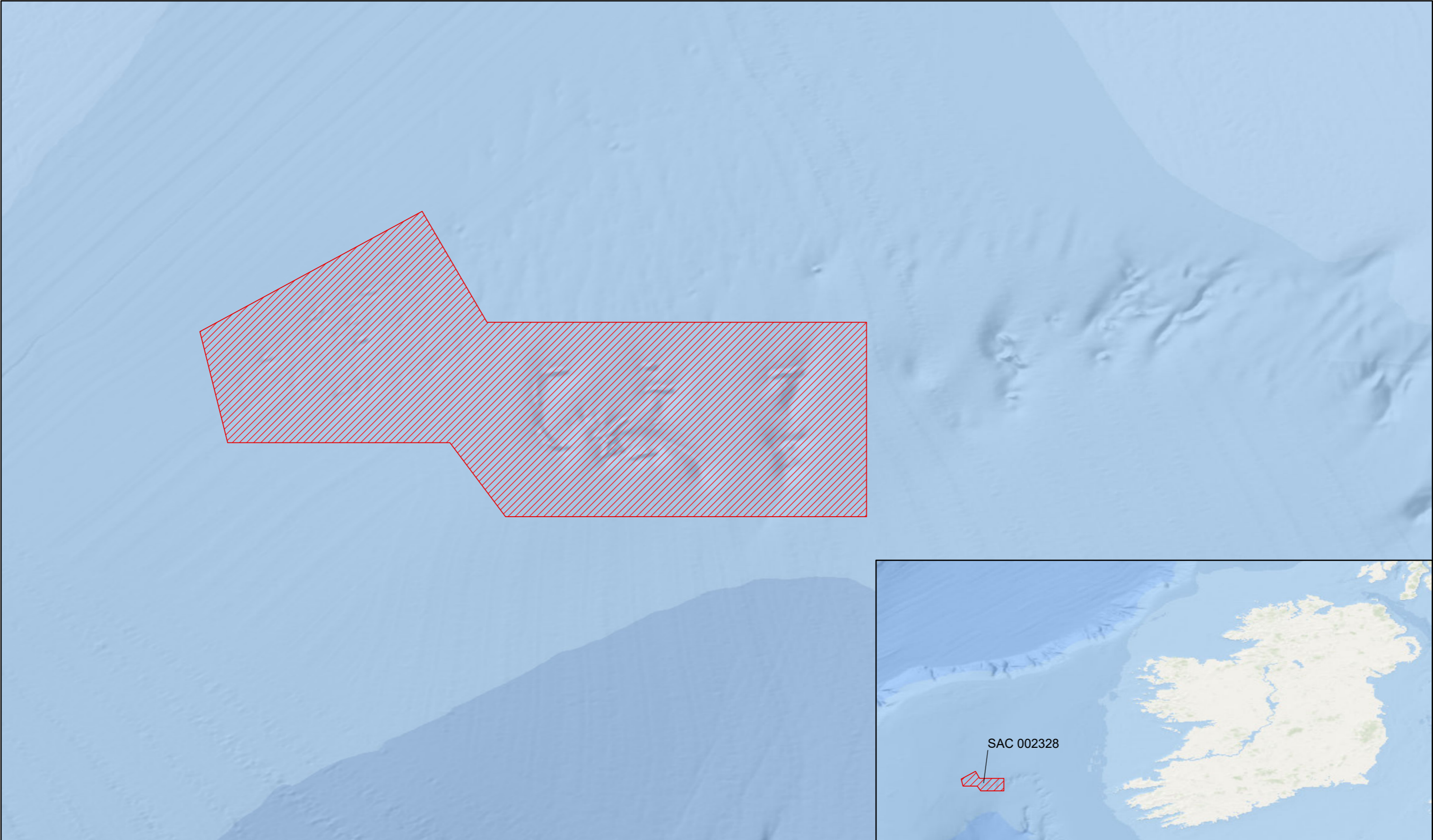
Year : 2010
Title : INFOMAR dataset
GIS Operations : Bathymetric dataset used to derive spatial footprint of reef features; clipped to SAC boundary. Expert opinion used as necessary to resolve any issues arising
Used For : 1170, Marine community types (maps 2, 3)

Year : 2002
Title : Irish National Seabed Survey 2002
GIS Operations : Bathymetric dataset used to derive spatial footprint of reef features; clipped to SAC boundary. Expert opinion used as necessary to resolve any issues arising
Used For : 1170, Marine community types (maps 2, 3)

Conservation Objectives for : Hovland Mound Province SAC [002328]**1170 Reefs**


To maintain the favourable conservation condition of Reefs in Hovland Mound Province SAC, which is defined by the following list of attributes and targets:

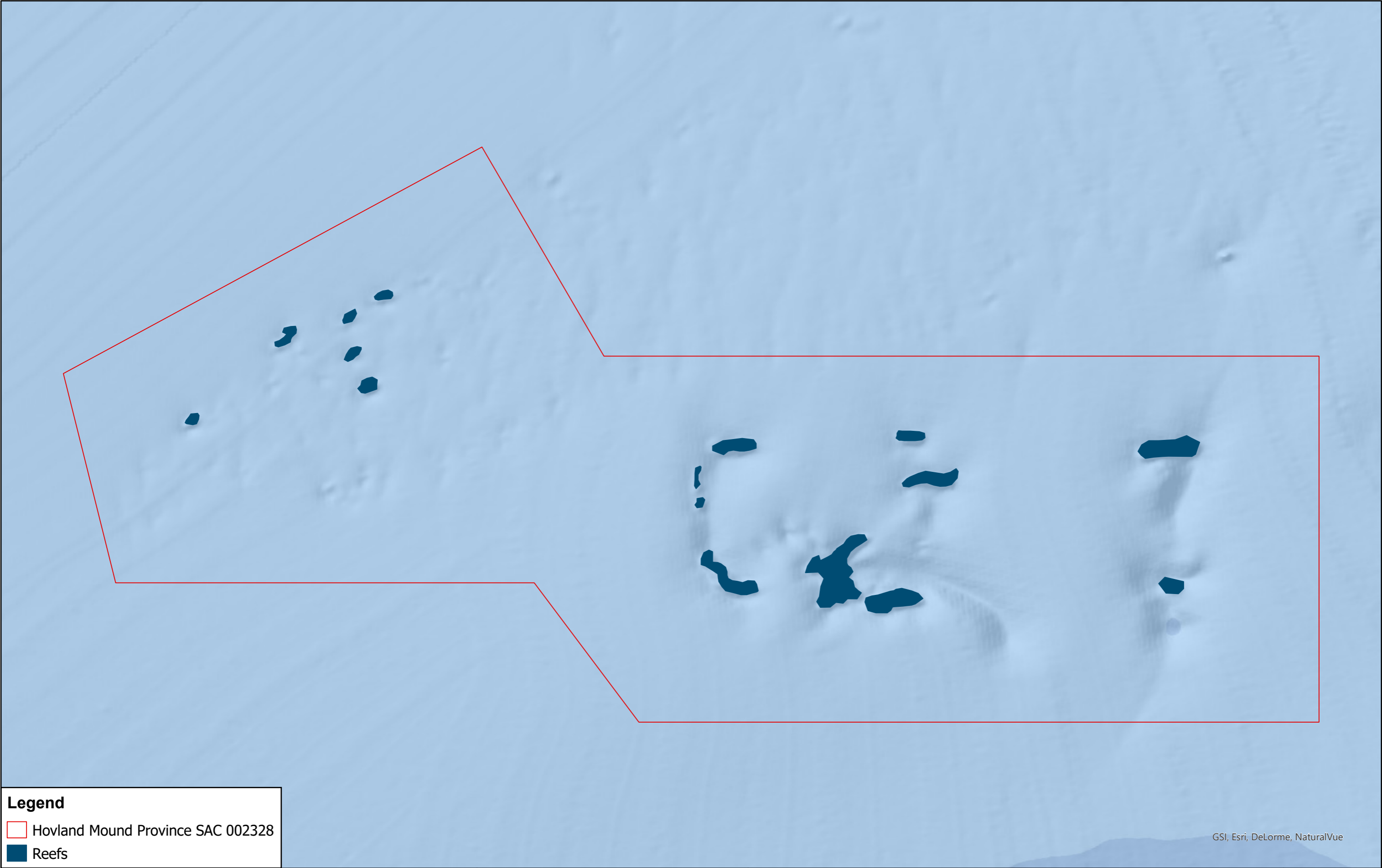
Attribute	Measure	Target	Notes
Area of geological features	Hectares	The permanent habitat area is stable or increasing, subject to natural processes. See map 2	Habitat area estimated as 1,850ha, based on information from the national seabed mapping programme INFOMAR (Dorschel et al., 2010) and the Irish National Seabed Survey (GSI, 2002). See the Hovland Mound Province SAC conservation objectives supporting document for marine habitats for further details
Distribution	Occurrence	The distribution of reefs is stable or increasing, subject to natural processes. See map 3	Based on information from the national seabed mapping programme INFOMAR (Dorschel et al., 2010) and the Irish National Seabed Survey (GSI, 2002). Map 3 shows the mapped geological features, which are used as indicators of the distribution of the reefs habitat. See the marine habitats supporting document for further details
Physical structure: habitat-forming species	Presence and structure	Maintain the structural integrity of the Hovland Mound Province reef community complex, subject to natural processes	Based on information from Dorschel et al. (2005), Rüggeberg et al. (2007), Wheeler et al. (2007), La Bianca et al. (2019) and Forde et al. (in prep.). See the marine habitats supporting document for further details
Community structure	Biological composition	Conserve the Hovland Mound Province reef community complex in a natural condition, subject to natural processes	Based on information from Dorschel et al. (2005), Rüggeberg et al. (2007), Wheeler et al. (2007), La Bianca et al. (2019) and Forde et al. (in prep.). See the marine habitats supporting document for further details



GSI, OceanWise, Esri, GEBCO, DeLorme, NaturalVue

Legend

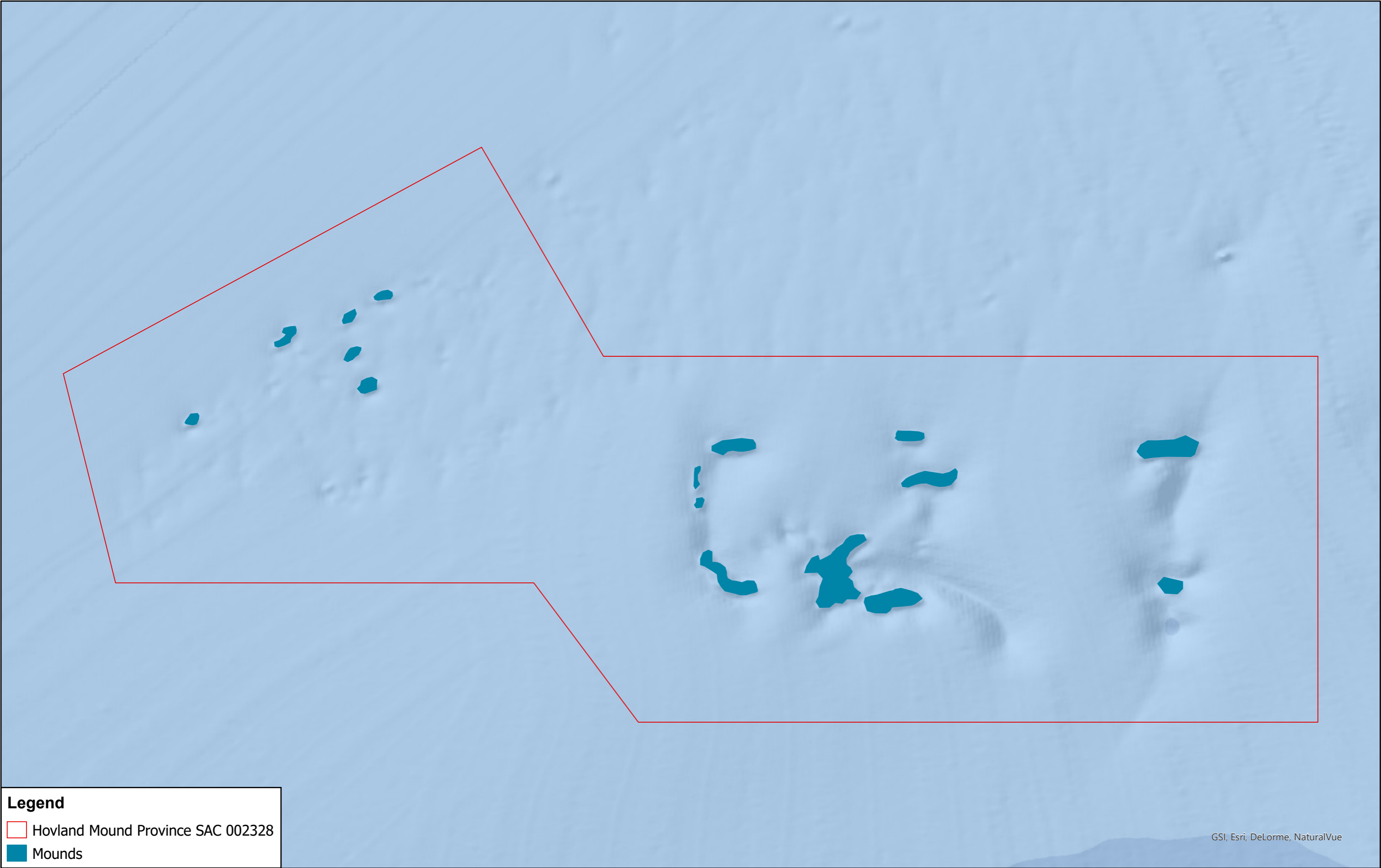
 Hovland Mound Province SAC 002328



Legend

Hovland Mound Province SAC 002328

Reefs



Legend

Hovland Mound Province SAC 002328

Mounds

GSI, Esri, DeLorme, NaturalVue