

National Parks and Wildlife Service

Conservation Objectives Series

Magharee Islands SAC 002261



*An Roinn
Ealaíon, Oidhreachta agus Gaeltachta*

*Department of
Arts, Heritage and the Gaeltacht*



**National Parks and Wildlife Service,
Department of Arts, Heritage and the Gaeltacht,
7 Ely Place, Dublin 2, Ireland.
Web: www.npws.ie
E-mail: nature.conservation@ahg.gov.ie**

Citation:

**NPWS (2013) Conservation Objectives: Magharee Islands SAC 002261. Version
1. National Parks and Wildlife Service, Department of Arts, Heritage and the
Gaeltacht.**

**Series Editor: Rebecca Jeffrey
ISSN 2009-4086**

Introduction

The overall aim of the Habitats Directive is to maintain or restore the favourable conservation status of habitats and species of community interest. These habitats and species are listed in the Habitats and Birds Directives and Special Areas of Conservation and Special Protection Areas are designated to afford protection to the most vulnerable of them. These two designations are collectively known as the Natura 2000 network.

European and national legislation places a collective obligation on Ireland and its citizens to maintain habitats and species in the Natura 2000 network at favourable conservation condition. The Government and its agencies are responsible for the implementation and enforcement of regulations that will ensure the ecological integrity of these sites.

A site-specific conservation objective aims to define favourable conservation condition for a particular habitat or species at that site.

The maintenance of habitats and species within Natura 2000 sites at favourable conservation condition will contribute to the overall maintenance of favourable conservation status of those habitats and species at a national level.

Favourable conservation status of a habitat is achieved when:

- its natural range, and area it covers within that range, are stable or increasing, and
- the specific structure and functions which are necessary for its long-term maintenance exist and are likely to continue to exist for the foreseeable future, and
- the conservation status of its typical species is favourable.

The favourable conservation status of a species is achieved when:

- population dynamics data on the species concerned indicate that it is maintaining itself on a long-term basis as a viable component of its natural habitats, and
- the natural range of the species is neither being reduced nor is likely to be reduced for the foreseeable future, and
- there is, and will probably continue to be, a sufficiently large habitat to maintain its populations on a long-term basis.

Notes/Guidelines:

1. The targets given in these conservation objectives are based on best available information at the time of writing. As more information becomes available, targets for attributes may change. These will be updated periodically, as necessary.
2. An appropriate assessment based on these conservation objectives will remain valid even if the targets are subsequently updated, providing they were the most recent objectives available when the assessment was carried out. It is essential that the date and version are included when objectives are cited.
3. Assessments cannot consider an attribute in isolation from the others listed for that habitat or species, or for other habitats and species listed for that site. A plan or project with an apparently small impact on one attribute may have a significant impact on another.
4. Please note that the maps included in this document do not necessarily show the entire extent of the habitats and species for which the site is listed. This should be borne in mind when appropriate assessments are being carried out.
5. When using these objectives, it is essential that the relevant backing/supporting documents are consulted, particularly where instructed in the targets or notes for a particular attribute.

Qualifying Interests

** indicates a priority habitat under the Habitats Directive*

002261	Magharee Islands SAC
--------	----------------------

1170	Reefs
------	-------

Please note that this SAC overlaps with Magharee Islands SPA (004125) and adjoins Tralee Bay and Magharees Peninsula, West to Cloghane SAC (002070). See map 2. The conservation objectives for this site should be used in conjunction with those for overlapping and adjacent sites as appropriate.

Supporting documents, relevant reports & publications

Supporting documents, NPWS reports and publications are available for download from: www.npws.ie/Publications

NPWS Documents

Year : 2013
Title : Magharee Islands SAC (site code: 2261) Conservation objectives supporting document-marine habitats V1
Author : NPWS
Series : Conservation objectives supporting document

Other References

Year : 1997
Title : The BioMar biotope viewer: a guide to marine habitats, fauna and flora in Britain and Ireland
Author : Picton, B.E.; Costello, M.J.
Series : Environmental Science Unit, Trinity College Dublin

Year : 2010
Title : MI benthic surveys of Natura 2000 sites: Area 1
Author : ERM
Series : Unpublished report to the Marine Institute and NPWS

Year : 2011
Title : Reef investigations in Tralee Bay and Magherees Peninsula, West to Cloghane cSAC (site code: IE002070) and Magharee Islands cSAC (site code: IE2261), Co. Kerry
Author : Aquafact
Series : Unpublished report to the Marine Institute and NPWS

Year : 2013
Title : Benthic survey services framework. Tralee Bay intertidal surveys 2009
Author : RPS
Series : Unpublished report to the Marine Institute and NPWS

Spatial data sources

Year :	Interpolated 2013
Title :	1996 BioMar survey; 2009 and 2010 subtidal surveys; 2009 intertidal survey
GIS Operations :	Polygon feature classes from marine community types base data sub-divided based on interpolation of marine survey data. Expert opinion used as necessary to resolve any issues arising
Used For :	1170, Marine community types (maps 3 and 4)
<hr/>	
Year :	2005
Title :	OSi Discovery series vector data
GIS Operations :	High water mark (HWM) and low water mark (LWM) polyline feature classes converted into polygon feature classes and combined; EU Annex I Saltmarsh and Coastal data erased out if present
Used For :	Marine community types base data (map 4)

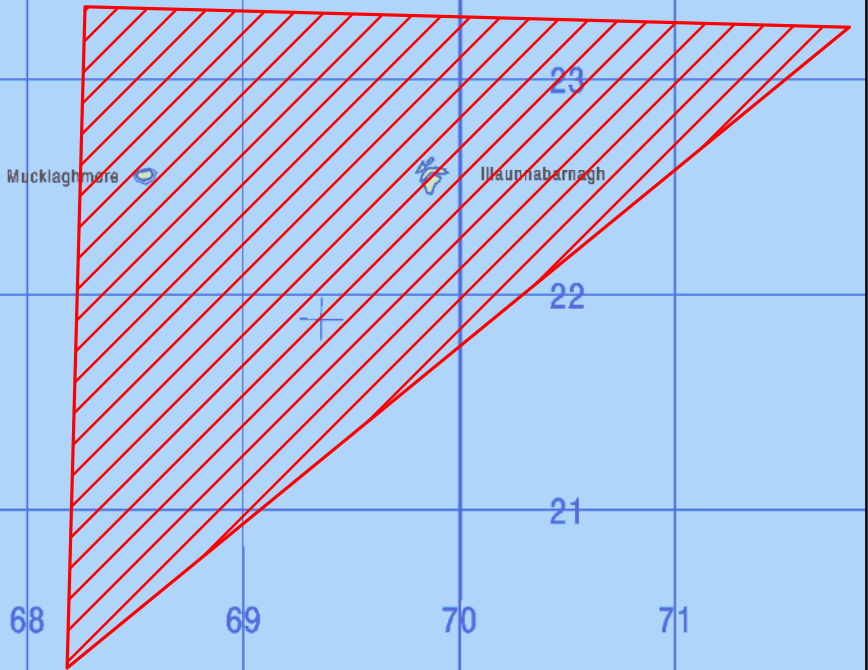
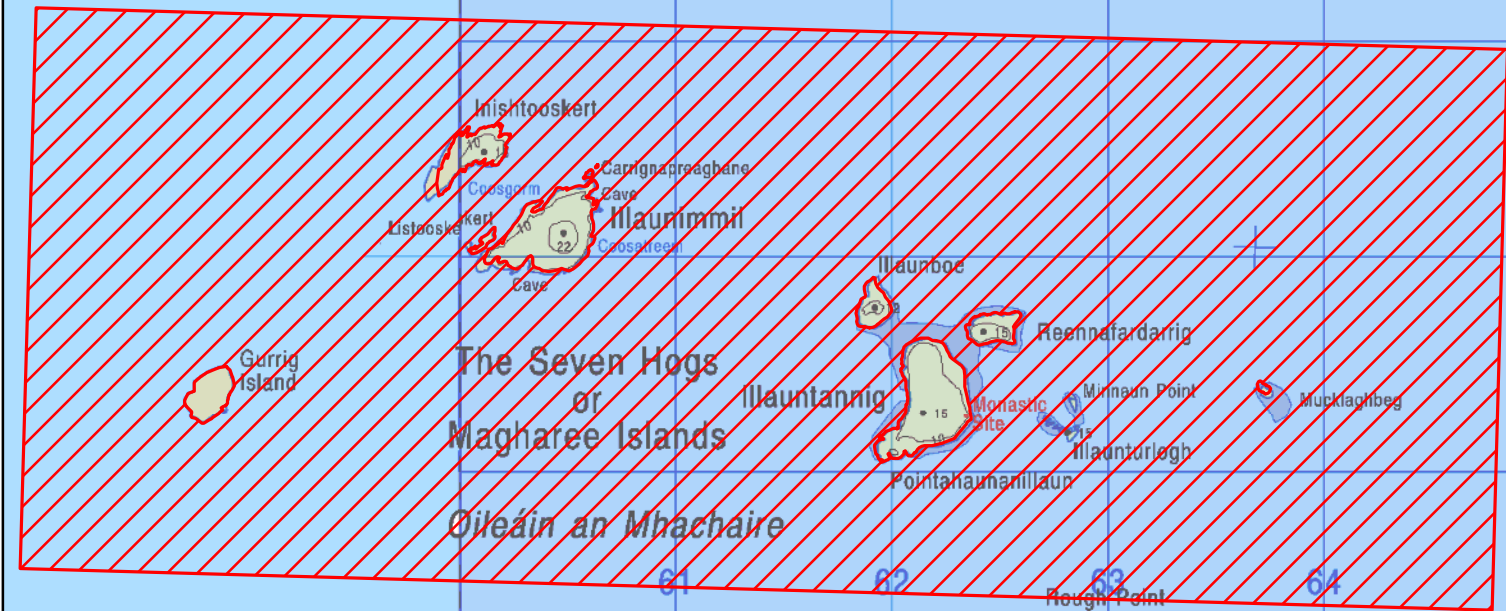
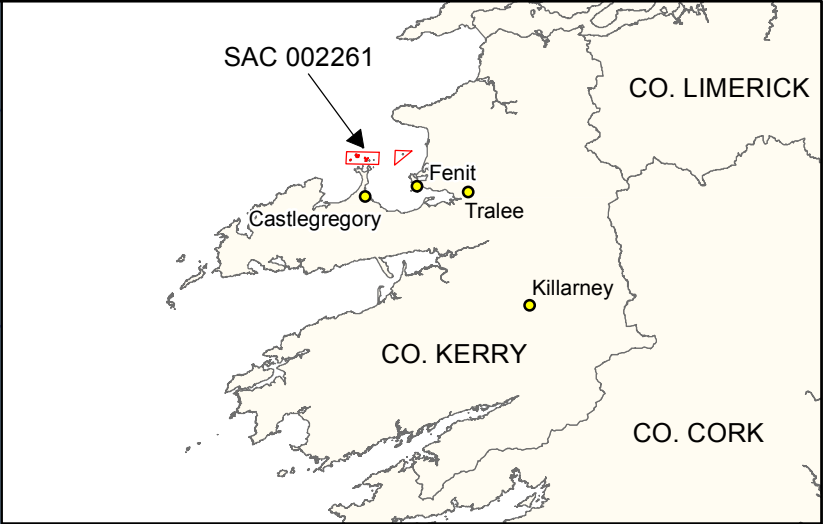
Conservation Objectives for : Magharee Islands SAC [002261]

1170 Reefs

To maintain the favourable conservation condition of Reefs in Magharee Islands SAC, which is defined by the following list of attributes and targets:

Attribute	Measure	Target	Notes
Habitat area	Hectares	The permanent habitat area is stable or increasing, subject to natural processes. See map 3	Habitat area estimated as 2,337ha from a 1996 BioMar survey, intertidal survey in 2009 (RPS, 2013) and subtidal surveys in 2009 (ERM, 2010) and 2010 (Aquafact, 2011)
Distribution	Occurrence	The distribution of reefs is stable or increasing, subject to natural processes. See map 3	Based on information from a 1996 BioMar survey, intertidal survey in 2009 (RPS, 2013) and subtidal surveys in 2009 (ERM, 2010) and 2010 (Aquafact, 2011). See marine supporting document for further details
Community structure	Biological composition	Conserve the following community types in a natural condition: Intertidal reef community complex; <i>Laminaria</i> -dominated community complex; Subtidal reef community complex. See map 4	Reef mapping based on information from a 1996 BioMar survey, intertidal survey in 2009 (RPS, 2013) and subtidal surveys in 2009 (ERM, 2010) and 2010 (Aquafact, 2011). See marine supporting document for further details

An tAigéan Atlantach



Legend

Magharee Islands SAC 002261

**An Roinn
Ealaíon, Oidhreacht agus Gaeltachta**
Department of
Arts, Heritage and the Gaeltacht

**MAP 1:
MAGHAREE ISLANDS SAC
CONSERVATION OBJECTIVES
SAC DESIGNATION**

Map to be read in conjunction with the NPWS Conservation Objectives Document.

**SITE CODE:
SAC 002261; version 3. CO. KERRY**

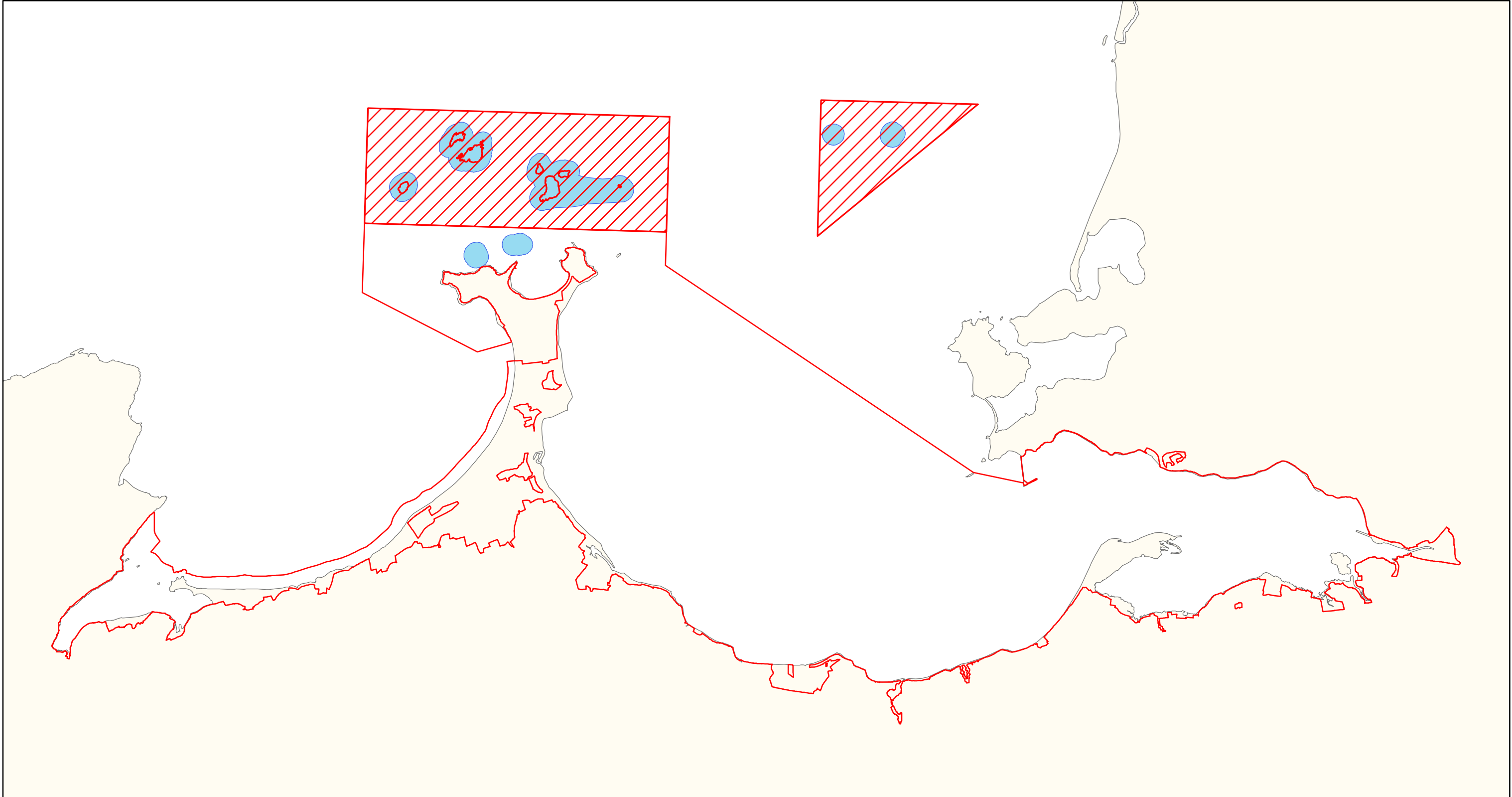
0 0.5 1 1.5 2 km

The mapped boundaries are of an indicative and general nature only. Boundaries of designated areas are subject to revision. Reproduced from Ordnance Survey material by permission of the Government (Permit number EN 0059212).

Níl sna teorainneacha ar na léarscáileanna ach nod garshuíomhach ginearálta. Féadfar athbhreithnithe a déanamh ar theorainneacha na gceantar comharthaíthe. Macasamhail d'ábhar na Suirbhéarachta Ordonáis le chead ón Rialtas (Ceadúnas Uimh. EN 0059212)

N

**Map Version 1
Date: Dec 2013**



Legend

Magharee Islands SAC 002261

Tralee Bay and Magharees Peninsula, West to Cloghane SAC 002070

Magharee Islands SPA 004125

OSi Discovery Series County Boundaries

