

National Parks and Wildlife Service

Conservation Objectives Series

Termon Strand SAC 001195



An Roinn Ealaíon, Oidhreachta,
Gnóthaí Réigiúnacha, Tuaithe agus Gaeltachta

Department of Arts, Heritage,
Regional, Rural and Gaeltacht Affairs



**National Parks and Wildlife Service,
Department of Arts, Heritage, Regional, Rural and Gaeltacht Affairs,
7 Ely Place, Dublin 2, Ireland.
Web: www.npws.ie
E-mail: nature.conservation@ahg.gov.ie**

Citation:

**NPWS (2016) Conservation Objectives: Termon Strand SAC 001195. Version 1.
National Parks and Wildlife Service, Department of Arts, Heritage, Regional,
Rural and Gaeltacht Affairs.**

**Series Editor: Rebecca Jeffrey
ISSN 2009-4086**

Introduction

The overall aim of the Habitats Directive is to maintain or restore the favourable conservation status of habitats and species of community interest. These habitats and species are listed in the Habitats and Birds Directives and Special Areas of Conservation and Special Protection Areas are designated to afford protection to the most vulnerable of them. These two designations are collectively known as the Natura 2000 network.

European and national legislation places a collective obligation on Ireland and its citizens to maintain habitats and species in the Natura 2000 network at favourable conservation condition. The Government and its agencies are responsible for the implementation and enforcement of regulations that will ensure the ecological integrity of these sites.

A site-specific conservation objective aims to define favourable conservation condition for a particular habitat or species at that site.

The maintenance of habitats and species within Natura 2000 sites at favourable conservation condition will contribute to the overall maintenance of favourable conservation status of those habitats and species at a national level.

Favourable conservation status of a habitat is achieved when:

- its natural range, and area it covers within that range, are stable or increasing, and
- the specific structure and functions which are necessary for its long-term maintenance exist and are likely to continue to exist for the foreseeable future, and
- the conservation status of its typical species is favourable.

The favourable conservation status of a species is achieved when:

- population dynamics data on the species concerned indicate that it is maintaining itself on a long-term basis as a viable component of its natural habitats, and
- the natural range of the species is neither being reduced nor is likely to be reduced for the foreseeable future, and
- there is, and will probably continue to be, a sufficiently large habitat to maintain its populations on a long-term basis.

Notes/Guidelines:

1. The targets given in these conservation objectives are based on best available information at the time of writing. As more information becomes available, targets for attributes may change. These will be updated periodically, as necessary.
2. An appropriate assessment based on these conservation objectives will remain valid even if the targets are subsequently updated, providing they were the most recent objectives available when the assessment was carried out. It is essential that the date and version are included when objectives are cited.
3. Assessments cannot consider an attribute in isolation from the others listed for that habitat or species, or for other habitats and species listed for that site. A plan or project with an apparently small impact on one attribute may have a significant impact on another.
4. Please note that the maps included in this document do not necessarily show the entire extent of the habitats and species for which the site is listed. This should be borne in mind when appropriate assessments are being carried out.
5. When using these objectives, it is essential that the relevant backing/supporting documents are consulted, particularly where instructed in the targets or notes for a particular attribute.

Qualifying Interests

** indicates a priority habitat under the Habitats Directive*

001195	Termon Strand SAC
--------	-------------------

1150	Coastal lagoonsE
------	------------------

Please note that this SAC adjoins Rutland Island and Sound SAC (002283). See map 2. The conservation objective for this site should be used in conjunction with those for the adjacent site as appropriate.

Supporting documents, relevant reports & publications

Supporting documents, NPWS reports and publications are available for download from: www.npws.ie/Publications

NPWS Documents

Year :	2007
Title :	Inventory of Irish coastal lagoons (version 2)
Author :	Oliver, G.
Series :	Unpublished report to NPWS
<hr/>	
Year :	2016
Title :	Termon Strand SAC (site code: 1195) Conservation objectives supporting document- coastal lagoons V1
Author :	NPWS
Series :	Conservation objectives supporting document

Other References

Year :	2010
Title :	Monitoring and Assessment of Irish Lagoons for the purpose of the EU Water Framework Directive
Author :	Roden, C.M.; Oliver, G.
Series :	EPA

Spatial data sources

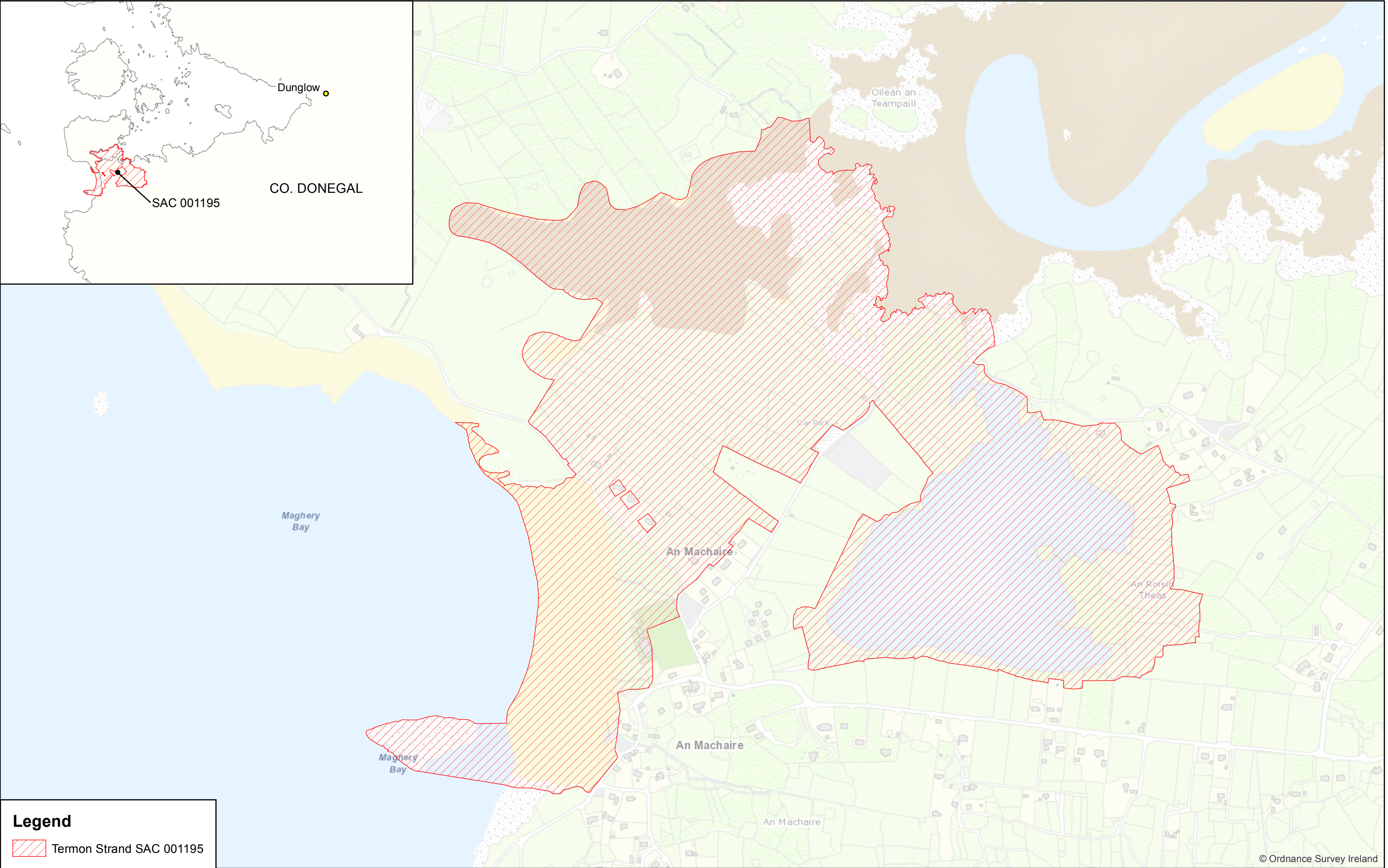
Year : Revision 2011
Title : Inventory of Irish Coastal Lagoons. Version 3
GIS Operations : Clipped to SAC boundary
Used For : 1150 (map 3)

Conservation Objectives for : Termon Strand SAC [001195]


1150 Coastal lagoons


To maintain the favourable conservation condition of Coastal lagoons in Termon Strand SAC, which is defined by the following list of attributes and targets:

Attribute	Measure	Target	Notes
Habitat area	Hectares	Area stable, subject to slight natural variation. Favourable reference area 15.3ha. See map 3	Area calculated from spatial data derived from Oliver (2007). Site code IL080 (Maghera Lough). See lagoons supporting document for further details
Habitat distribution	Occurrence	No decline, subject to natural processes. See map 3	Site IL080 in Oliver (2007). See lagoons supporting document for further details
Salinity regime	Practical salinity units (psu)	Median annual salinity and temporal variation within natural ranges	Maghera Lough is described as a meso-polyhaline lagoon. See lagoons supporting document for further details
Hydrological regime	Metres	Annual water level fluctuations and minima within natural ranges	Maximum depth of Maghera Lough is recorded as less than 2m. See lagoons supporting document for further details
Barrier: connectivity between lagoon and sea	Permeability	Appropriate hydrological connections between lagoons and sea, including where necessary, appropriate management	Maghera Lough is described as a natural rock/peat lagoon with a modified sluiced outlet. See lagoons supporting document for further details
Water quality: Chlorophyll <i>a</i>	µg/L	Annual median chlorophyll <i>a</i> within natural range and less than 5µg/L	Target based on Roden and Oliver (2013). See lagoons supporting document for further details
Water quality: Molybdate Reactive Phosphorus (MRP)	mg/L	Annual median MRP within natural range and not more than 0.1mg/L	Target based on Roden and Oliver (2013). See lagoons supporting document for further details
Water quality: Dissolved Inorganic Nitrogen (DIN)	mg/L	Annual median DIN within natural range and not more than 0.15mg/L	Target based on Roden and Oliver (2013). See lagoons supporting document for further details
Depth of macrophyte colonisation	Metres	Macrophyte colonisation to maximum depth of lagoon	Increased depth of colonisation increases both the extent and diversity of submergent macrophytes. Where a lagoon is less than 2m deep, it is expected that macrophyte colonisation would extend to the full depth of the lagoon. See lagoons supporting document for further details
Typical plant species	Number and m ²	Maintain number and extent of listed lagoonal specialists, subject to natural variation	Species listed in Oliver (2007). See lagoons supporting document for further details
Typical animal species	Number	Maintain listed lagoon specialists, subject to natural variation	Species listed in Oliver (2007). See lagoons supporting document for further details
Negative indicator species	Number and percentage cover	Negative indicator species absent or under control	Low salinity, shallow water and elevated nutrient levels increase the threat of unnatural encroachment by reedbeds. See lagoons supporting document for further details



Legend

 Termon Strand SAC 001195

 An Roinn Ealaíon, Oidhreacht, Gnóthaí Réigiúnacha, Tuaithe agus Gaeltachta
Department of Arts, Heritage, Regional, Rural and Gaeltacht Affairs

**MAP 1:
TERMON STRAND SAC
CONSERVATION OBJECTIVES
SAC DESIGNATION**

Map to be read in conjunction with the NPWS Conservation Objectives Document.

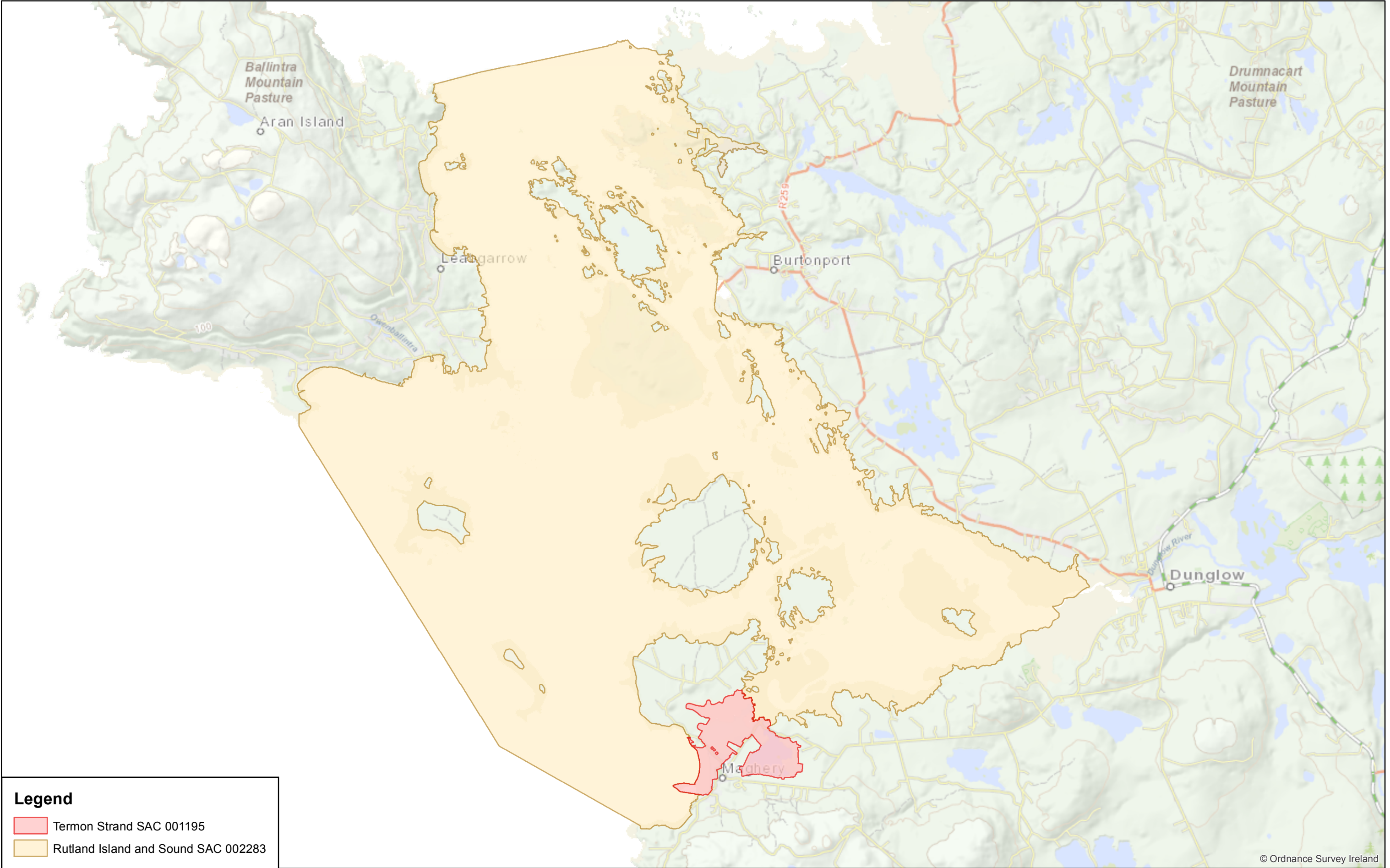
**SITE CODE:
SAC 001195; version 3.
CO. DONEGAL**

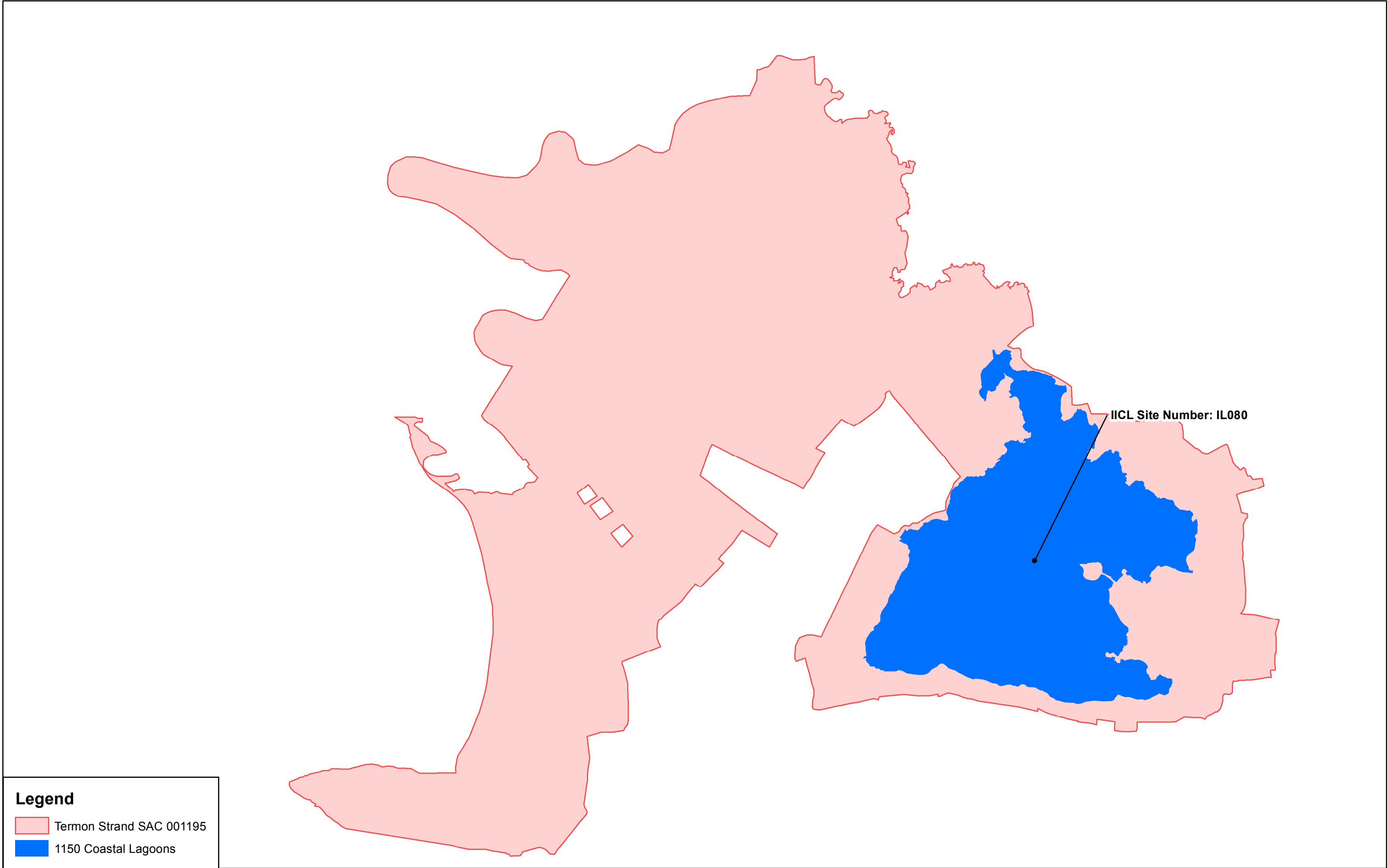
0 0.07 0.14 0.21 0.28 0.35 km

The mapped boundaries are of an indicative and general nature only. Boundaries of designated areas are subject to revision.
Ordnance Survey of Ireland Licence No EN 0059216. © Ordnance Survey of Ireland Government of Ireland

Níl sna teorainneacha ar na léarscáileanna ach nod garshuíomhach ginearálta. Féadfar athbhreithniú a déanamh ar theorainneacha na gceantar comharthaíthe. Suirbhéarachta Ordonáis na hÉireann Ceadúnas


**Map Version 1
Date: Aug 2016**






Legend

Termon Strand SAC 001195

1150 Coastal Lagoons



An Roinn Ealaíon, Oidhreachta,
Gnóthaí Réigiúnacha, Tuaithe agus Gaeltachta


Department of Arts, Heritage,
Regional, Rural and Gaeltacht Affairs

MAP 3:
TERMON STRAND SAC
CONSERVATION OBJECTIVES
LAGOON HABITATS

Map to be read in conjunction with the NPWS Conservation Objectives Document.

SITE CODE:
SAC 001195; version 3.
CO. DONEGAL

0 0.055 0.11 0.165 0.22 0.275 km



The mapped boundaries are of an indicative and general nature only. Boundaries of designated areas are subject to revision.
Ordnance Survey of Ireland Licence No EN 0059216. © Ordnance Survey of Ireland Government of Ireland

Níl sna teorainneacha ar na léarscáileanna ach nod garshuíomhach ginearálta. Féadfar athbhreithnithe a déanamh ar theorainneacha na gceantar comharthaithe. Suirbhéarachta Ordonáis na hÉireann Ceadúnas



Map Version 1
Date: Aug 2016