

# National Parks and Wildlife Service

---

## *Conservation Objectives Series*

---

### Dunragh Loughs/Pettigo Plateau SAC 001125



An Roinn Ealaíon, Oidhreachta,  
Gnóthaí Réigiúnacha, Tuaithe agus Gaeltachta

---

Department of Arts, Heritage,  
Regional, Rural and Gaeltacht Affairs



**National Parks and Wildlife Service,  
Department of Arts, Heritage, Regional, Rural and Gaeltacht Affairs,  
7 Ely Place, Dublin 2, Ireland.  
Web: [www.npws.ie](http://www.npws.ie)  
E-mail: [nature.conservation@ahg.gov.ie](mailto:nature.conservation@ahg.gov.ie)**

**Citation:**

**NPWS (2017) Conservation Objectives: Dunragh Loughs/Pettigo Plateau SAC  
001125. Version 1. National Parks and Wildlife Service, Department of Arts,  
Heritage, Regional, Rural and Gaeltacht Affairs.**

**Series Editor: Rebecca Jeffrey  
ISSN 2009-4086**

## Introduction

The overall aim of the Habitats Directive is to maintain or restore the favourable conservation status of habitats and species of community interest. These habitats and species are listed in the Habitats and Birds Directives and Special Areas of Conservation and Special Protection Areas are designated to afford protection to the most vulnerable of them. These two designations are collectively known as the Natura 2000 network.

European and national legislation places a collective obligation on Ireland and its citizens to maintain habitats and species in the Natura 2000 network at favourable conservation condition. The Government and its agencies are responsible for the implementation and enforcement of regulations that will ensure the ecological integrity of these sites.

A site-specific conservation objective aims to define favourable conservation condition for a particular habitat or species at that site.

The maintenance of habitats and species within Natura 2000 sites at favourable conservation condition will contribute to the overall maintenance of favourable conservation status of those habitats and species at a national level.

Favourable conservation status of a habitat is achieved when:

- its natural range, and area it covers within that range, are stable or increasing, and
- the specific structure and functions which are necessary for its long-term maintenance exist and are likely to continue to exist for the foreseeable future, and
- the conservation status of its typical species is favourable.

The favourable conservation status of a species is achieved when:

- population dynamics data on the species concerned indicate that it is maintaining itself on a long-term basis as a viable component of its natural habitats, and
- the natural range of the species is neither being reduced nor is likely to be reduced for the foreseeable future, and
- there is, and will probably continue to be, a sufficiently large habitat to maintain its populations on a long-term basis.

### Notes/Guidelines:

1. The targets given in these conservation objectives are based on best available information at the time of writing. As more information becomes available, targets for attributes may change. These will be updated periodically, as necessary.
2. An appropriate assessment based on these conservation objectives will remain valid even if the targets are subsequently updated, providing they were the most recent objectives available when the assessment was carried out. It is essential that the date and version are included when objectives are cited.
3. Assessments cannot consider an attribute in isolation from the others listed for that habitat or species, or for other habitats and species listed for that site. A plan or project with an apparently small impact on one attribute may have a significant impact on another.
4. Please note that the maps included in this document do not necessarily show the entire extent of the habitats and species for which the site is listed. This should be borne in mind when appropriate assessments are being carried out.
5. When using these objectives, it is essential that the relevant backing/supporting documents are consulted, particularly where instructed in the targets or notes for a particular attribute.

## Qualifying Interests

*\* indicates a priority habitat under the Habitats Directive*

---

001125	Dunragh Loughs/Pettigo Plateau SAC
4010	Northern Atlantic wet heaths with <del>Órláidín</del> <del>Órláidín</del>
7130	Blanket bogs (* if active bog)

---

**Please note that this SAC overlaps with Pettigo Plateau Nature Reserve SPA (004099) and is adjacent to River Finn SAC (002301) and Lough Derg (Donegal) SPA (004057). See map 2. The conservation objectives for this site should be used in conjunction with those for the overlapping and adjacent sites as appropriate.**

## Supporting documents, relevant reports & publications

Supporting documents, NPWS reports and publications are available for download from: [www.npws.ie/Publications](http://www.npws.ie/Publications)

### NPWS Documents

<b>Year :</b>	1990
<b>Title :</b>	A survey to locate lowland blanket bogs of scientific interest in county Donegal and upland blanket bogs in counties Cavan, Leitrim and Roscommon
<b>Author :</b>	Douglas, C.; Dunnells, D.; Scally, L.; Wyse Jackson, M.
<b>Series :</b>	Unpublished report to NPWS
<b>Year :</b>	2005
<b>Title :</b>	Conservation Plan for 2005-2010. Dunragh Loughs/Pettigo Plateau cSAC, SPA and NR Site Code 001125 and 004099 Co. Donegal
<b>Author :</b>	NPWS
<b>Series :</b>	Conservation Plan
<b>Year :</b>	2012
<b>Title :</b>	Ireland Red List No. 8: Bryophytes
<b>Author :</b>	Lockhart, N.; Hodgetts, N.; Holyoak, D.
<b>Series :</b>	Ireland Red List series, NPWS
<b>Year :</b>	2014
<b>Title :</b>	Guidelines for a national survey and conservation assessment of upland vegetation and habitats in Ireland, Version 2.0
<b>Author :</b>	Perrin, P.M.; Barron, S.J.; Roche, J.R.; O'Hanrahan, B.
<b>Series :</b>	Irish Wildlife Manual No. 79
<b>Year :</b>	2016
<b>Title :</b>	Ireland Red List No. 10: Vascular Plants
<b>Author :</b>	Wyse Jackson, M.; FitzPatrick, Ú.; Cole, E.; Jebb, M.; McFerran, D.; Sheehy Skeffington, M.; Wright, M.
<b>Series :</b>	Ireland Red Lists series, NPWS
<b>Year :</b>	2017
<b>Title :</b>	Dunragh Loughs/Pettigo Plateau SAC (site code: 1125) Conservation objectives supporting document- blanket bog and associated habitats V1
<b>Author :</b>	NPWS
<b>Series :</b>	Conservation objectives supporting document

## Conservation Objectives for : Dunragh Loughs/Pettigo Plateau SAC [001125]

### 4010 Northern Atlantic wet heaths with *Erica tetralix*

**To restore the favourable conservation condition of Northern Atlantic wet heaths with *Erica tetralix* in Dunragh Loughs/Pettigo Plateau SAC, which is defined by the following list of attributes and targets:**

Attribute	Measure	Target	Notes
Habitat area	Hectares	Area stable or increasing, subject to natural processes	Northern Atlantic wet heaths with <i>Erica tetralix</i> has not been mapped in detail for Dunragh Loughs/Pettigo Plateau SAC but from current available data the total area of the qualifying habitat is estimated to be approximately 401ha, covering 20% of the SAC (NPWS internal files). Further details on this and the following attributes can be found in the Dunragh Loughs/Pettigo Plateau SAC conservation objectives supporting document for blanket bogs and associated habitats
Habitat distribution	Occurrence	No decline, subject to natural processes	Wet heath is documented to occur on hillsides throughout the SAC. It occurs in close association with blanket bog, wet grassland and flushes (NPWS, 2005). Further information can be found within NPWS (2005) and the blanket bogs and associated habitats supporting document
Ecosystem function: soil nutrients	Soil pH and appropriate nutrient levels at a representative number of monitoring stops	Maintain soil nutrient status within natural range	See the blanket bogs and associated habitats supporting document for further details
Community diversity	Abundance of variety of vegetation communities	Maintain variety of vegetation communities, subject to natural processes	Douglas et al. (1990) recorded wet heath vegetation communities in this SAC, one of which corresponds to a community recorded in the National Survey of Upland Habitats and listed in the provisional list of vegetation communities described in Perrin et al. (2014). Further information on vegetation communities associated with this habitat is presented in Perrin et al. (2014)
Vegetation composition: cross-leaved heath	Occurrence within 20m of a representative number of monitoring stops	Cross-leaved heath ( <i>Erica tetralix</i> ) present within a 20m radius of each monitoring stop	Attribute and target based on Perrin et al. (2014)
Vegetation composition: positive indicator species	Percentage cover at a representative number of 2m x 2m monitoring stops	Cover of positive indicator species at least 50%	Attribute and target based on Perrin et al. (2014), where the list of positive indicator species for this habitat is also presented
Vegetation composition: lichens and bryophytes	Percentage cover at a representative number of 2m x 2m monitoring stops	Total cover of <i>Cladonia</i> and <i>Sphagnum</i> species, <i>Racomitrium lanuginosum</i> and pleurocarpous mosses at least 10%	Attribute and target based on Perrin et al. (2014)
Vegetation composition: ericoid species and crowberry	Percentage cover at a representative number of 2m x 2m monitoring stops	Cover of ericoid species and crowberry ( <i>Empetrum nigrum</i> ) at least 15%	Attribute and target based on Perrin et al. (2014)
Vegetation composition: dwarf shrub species	Percentage cover at a representative number of 2m x 2m monitoring stops	Cover of dwarf shrubs less than 75%	Attribute and target based on Perrin et al. (2014)
Vegetation composition: negative indicator species	Percentage cover at a representative number of 2m x 2m monitoring stops	Total cover of negative indicator species less than 1%	Attribute and target based on Perrin et al. (2014), where the list of negative indicator species for this habitat is also presented
Vegetation composition: non-native species	Percentage cover at, and in local vicinity of, a representative number of 2m x 2m monitoring stops	Cover of non-native species less than 1%	Attribute and target based on Perrin et al. (2014). Rhododendron ( <i>Rhododendron ponticum</i> ) and the moss <i>Campylopus introflexus</i> have been recorded from the SAC (Douglas et al., 1990; NPWS internal files) but these non-native species cannot be attributed specifically to wet heath

Vegetation composition: native trees and shrubs	Percentage cover in local vicinity of a representative number of monitoring stops	Cover of scattered native trees and shrubs less than 20%	Attribute and target based on Perrin et al. (2014)
Vegetation composition: bracken	Percentage cover in local vicinity of a representative number of monitoring stops	Cover of bracken ( <i>Pteridium aquilinum</i> ) less than 10%	Attribute and target based on Perrin et al. (2014)
Vegetation composition: soft rush	Percentage cover in local vicinity of a representative number of monitoring stops	Cover of soft rush ( <i>Juncus effusus</i> ) less than 10%	Attribute and target based on Perrin et al. (2014)
Vegetation structure: <i>Sphagnum</i> condition	Condition at a representative number of 2m x 2m monitoring stops	Less than 10% of the <i>Sphagnum</i> cover is crushed, broken and/or pulled up	Attribute and target based on Perrin et al. (2014)
Vegetation structure: signs of browsing	Percentage of shoots browsed at a representative number of 2m x 2m monitoring stops	Less than 33% collectively of the last complete growing season's shoots of ericoids, crowberry ( <i>Empetrum nigrum</i> ) and bog-myrtle ( <i>Myrica gale</i> ) showing signs of browsing	Attribute and target based on Perrin et al. (2014)
Vegetation structure: burning	Occurrence in local vicinity of a representative number of monitoring stops	No signs of burning in sensitive areas, into the moss, liverwort or lichen layer or exposure of peat surface due to burning	Attribute and target based on Perrin et al. (2014), where the list of sensitive areas for this habitat is also presented
Physical structure: disturbed bare ground	Percentage cover at, and in local vicinity of, a representative number of 2m x 2m monitoring stops	Cover of disturbed bare ground less than 10%	Attribute and target based on Perrin et al. (2014)
Physical structure: drainage	Percentage area in local vicinity of a representative number of monitoring stops	Area showing signs of drainage from heavy trampling, tracking or ditches less than 10%	Attribute and target based on Perrin et al. (2014)
Indicators of local distinctiveness	Occurrence and population size	No decline in distribution or population sizes of rare, threatened or scarce species associated with the habitat	This includes species listed in the Flora (Protection) Order, 2015 and/or the red data lists (Lockhart et al., 2012; Wyse Jackson et al., 2016)

## Conservation Objectives for : Dunragh Loughs/Pettigo Plateau SAC [001125]

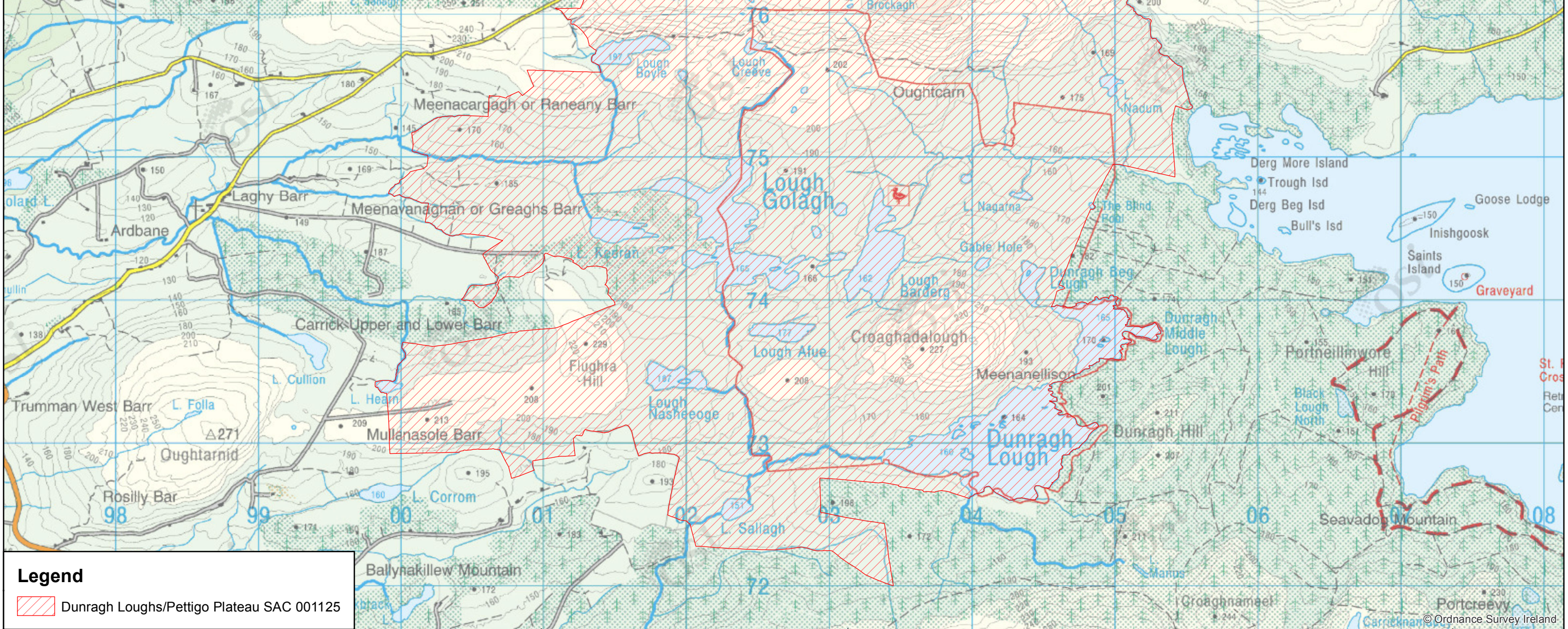
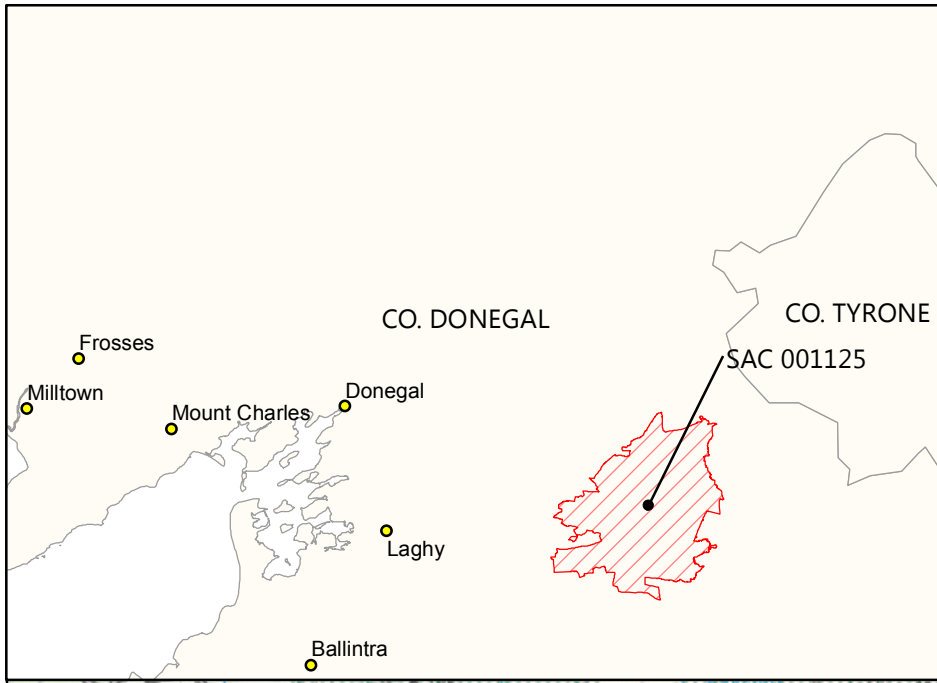
### 7130 Blanket bogs (\* if active bog)

**To restore the favourable conservation condition of Blanket bogs (\* if active bog) in Dunragh Loughs/Pettigo Plateau SAC, which is defined by the following list of attributes and targets:**

Attribute	Measure	Target	Notes
Habitat area	Hectares	Area stable or increasing, subject to natural processes	Blanket bog has not been mapped in detail for Dunragh Loughs/Pettigo Plateau SAC but from current available data the total area of the qualifying habitat is estimated to be approximately 540ha, covering 27% of the SAC (NPWS internal files). Further details on this and the following attributes can be found in the Dunragh Loughs/Pettigo Plateau SAC conservation objectives supporting document for blanket bogs and associated habitats
Habitat distribution	Occurrence	No decline, subject to natural processes	Blanket bog is documented to occur throughout the SAC. It is particularly well-developed on the gentle undulating terrain that is present on the plateau in the southern section of the SAC. Further information can be found within Douglas et al. (1990), NPWS (2005), NPWS internal files and the blanket bogs and associated habitats supporting document
Ecosystem function: soil nutrients	Soil pH and appropriate nutrient levels at a representative number of monitoring stops	Maintain soil nutrient status within natural range	See the blanket bogs and associated habitats supporting document for further details
Ecosystem function: peat formation	Active blanket bog as a proportion of the total area of Annex I blanket bog habitat	At least 99% of the total Annex I blanket bog area is active	See the blanket bogs and associated habitats supporting document for further details
Ecosystem function: hydrology	Flow direction, water levels, occurrence of drains and erosion gullies	Natural hydrology unaffected by drains and erosion	Further details and a brief discussion of restoration potential is presented in the blanket bogs and associated habitats supporting document
Community diversity	Abundance of variety of vegetation communities	Maintain variety of vegetation communities, subject to natural processes	A variety of blanket bog vegetation communities have been recorded in this SAC (Douglas et al., 1990; NPWS internal files), two of which correspond to communities recorded in the National Survey of Upland Habitats and listed in the provisional list of vegetation communities described in Perrin et al. (2014). Further information on vegetation communities associated with this habitat is presented in Perrin et al. (2014)
Vegetation composition: positive indicator species	Number of species at a representative number of 2m x 2m monitoring stops	Number of positive indicator species present at each monitoring stop is at least seven	Attribute and target based on Perrin et al. (2014), where the list of positive indicator species for this habitat is also presented
Vegetation composition: lichens and bryophytes	Percentage cover at a representative number of 2m x 2m monitoring stops	Cover of bryophytes or lichens, excluding <i>Sphagnum fallax</i> , at least 10%	Attribute and target based on Perrin et al. (2014)
Vegetation composition: potential dominant species	Percentage cover at a representative number of 2m x 2m monitoring stops	Cover of each of the potential dominant species less than 75%	Attribute and target based on Perrin et al. (2014). See the blanket bogs and associated habitats supporting document for the list of potential dominant species
Vegetation composition: negative indicator species	Percentage cover at a representative number of 2m x 2m monitoring stops	Total cover of negative indicator species less than 1%	Attribute and target based on Perrin et al. (2014), where the list of negative indicator species for this habitat is also presented
Vegetation composition: non-native species	Percentage cover at, and in local vicinity of, a representative number of 2m x 2m monitoring stops	Cover of non-native species less than 1%	Attribute and target based on Perrin et al. (2014). Rhododendron ( <i>Rhododendron ponticum</i> ) was recorded from blanket bog within the SAC (NPWS internal files). The non-native moss <i>Campylopus introflexus</i> has been recorded from the SAC (Douglas et al., 1990) but it cannot be attributed specifically to blanket bog



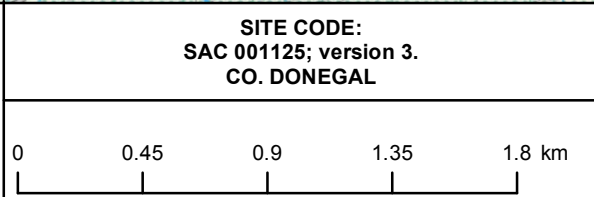
Vegetation composition: native trees and shrubs	Percentage cover in local vicinity of a representative number of monitoring stops	Cover of scattered native trees and shrubs less than 10%	Attribute and target based on Perrin et al. (2014)
Vegetation structure: <i>Sphagnum</i> condition	Condition at a representative number of 2m x 2m monitoring stops	Less than 10% of the <i>Sphagnum</i> cover is crushed, broken and/or pulled up	Attribute and target based on Perrin et al. (2014)
Vegetation structure: signs of browsing	Percentage of shoots browsed at a representative number of 2m x 2m monitoring stops	Last complete growing season's shoots of ericoids, crowberry ( <i>Empetrum nigrum</i> ) and bog-myrtle ( <i>Myrica gale</i> ) showing signs of browsing collectively less than 33%	Attribute and target based on Perrin et al. (2014)
Vegetation structure: burning	Occurrence in local vicinity of a representative number of monitoring stops	No signs of burning in sensitive areas, into the moss, liverwort or lichen layer or exposure of peat surface due to burning	Attribute and target based on Perrin et al. (2014), where the list of sensitive areas for this habitat is also presented
Physical structure: disturbed bare ground	Percentage cover at, and in local vicinity of, a representative number of 2m x 2m monitoring stops	Cover of disturbed bare ground less than 10%	Attribute and target based on Perrin et al. (2014)
Physical structure: drainage	Percentage area in local vicinity of a representative number of monitoring stops	Area showing signs of drainage from heavy trampling, tracking or ditches less than 10%	Attribute and target based on Perrin et al. (2014)
Physical structure: erosion	Percentage area in local vicinity of a representative number of monitoring stops	Less than 5% of the greater bog mosaic comprises erosion gullies and eroded areas	Attribute and target based on Perrin et al. (2014)
Indicators of local distinctiveness	Occurrence and population size	No decline in distribution or population sizes of rare, threatened or scarce species associated with the habitat	This includes species listed in the Flora (Protection) Order, 2015 and/or the red data lists (Lockhart et al., 2012; Wyse Jackson et al., 2016)



An Roinn Ealaíon, Oidhreacht, Gnóthai Réigiúnacha, Tuaithe agus Gaeltachta  
Department of Arts, Heritage, Regional, Rural and Gaeltacht Affairs

**MAP 1:**  
**DUNRAGH LOUGHS / PETTIGO PLATEAU SAC**  
**CONSERVATION OBJECTIVES**  
**SAC DESIGNATION**

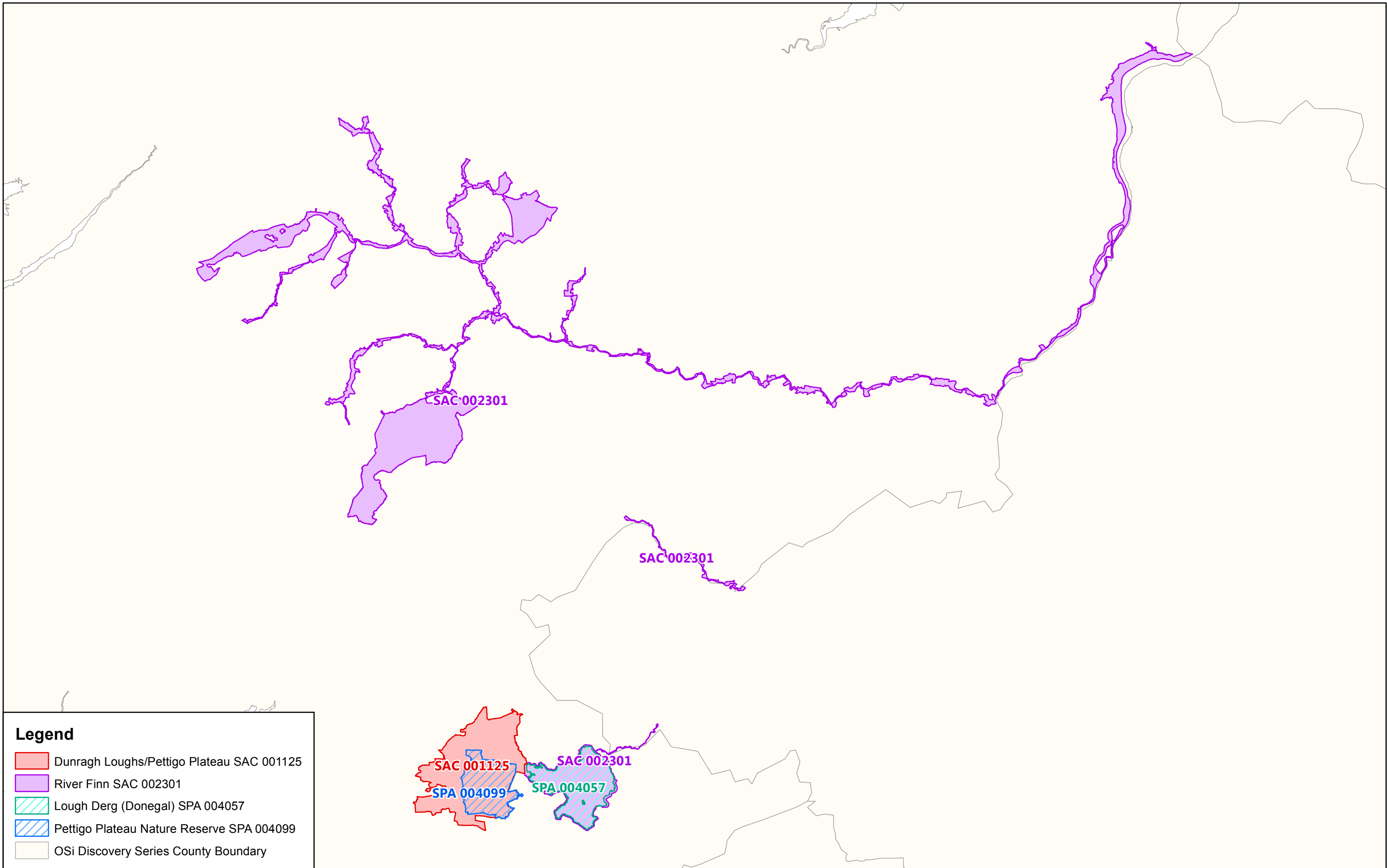
Map to be read in conjunction with the NPWS Conservation Objectives Document.



The mapped boundaries are of an indicative and general nature only. Boundaries of designated areas are subject to revision.  
Ordnance Survey of Ireland Licence No EN 0059216. © Ordnance Survey of Ireland Government of Ireland.

Níl sna teorainneacha ar na léarscáileanna ach nod garshuíomhach ginearálta. Féadfar athbhreithnithe a déanamh ar theorainneacha na gceantar comharthaithe. Suirbhéarachtá Ordonáís na hÉireann Ceadúnas Uimh EN 0059216. © Suirbhéarachtá Ordonáís na hÉireann Rialtas na hÉireann.





**Legend**

- Dunragh Loughs/Pettigo Plateau SAC 001125
- River Finn SAC 002301
- Lough Derg (Donegal) SPA 004057
- Pettigo Plateau Nature Reserve SPA 004099
- OSi Discovery Series County Boundary