

National Parks and Wildlife Service

Conservation Objectives Series

Ballyteige (Clare) SAC 000994



An Roinn Tithíochta,
Rialtais Áitiúil agus Oidhreacht
Department of Housing,
Local Government and Heritage

**National Parks and Wildlife Service,
Department of Housing, Local Government and Heritage,
90 King Street North, Dublin 7, D07 N7CV, Ireland.
Web: www.npws.ie
E-mail: natureconservation@housing.gov.ie**

Citation:

**NPWS (2021) Conservation Objectives: Ballyteige (Clare) SAC 000994. Version 1.
National Parks and Wildlife Service, Department of Housing, Local Government
and Heritage.**

**Series Editors: Rebecca Jeffrey and Christina Campbell
ISSN 2009-4086**

Introduction

The overall aim of the Habitats Directive is to maintain or restore the favourable conservation status of habitats and species of community interest. These habitats and species are listed in the Habitats and Birds Directives and Special Areas of Conservation and Special Protection Areas are designated to afford protection to the most vulnerable of them. These two designations are collectively known as the Natura 2000 network.

European and national legislation places a collective obligation on Ireland and its citizens to maintain habitats and species in the Natura 2000 network at favourable conservation condition. The Government and its agencies are responsible for the implementation and enforcement of regulations that will ensure the ecological integrity of these sites.

A site-specific conservation objective aims to define favourable conservation condition for a particular habitat or species at that site.

The maintenance of habitats and species within Natura 2000 sites at favourable conservation condition will contribute to the overall maintenance of favourable conservation status of those habitats and species at a national level.

Favourable conservation status of a habitat is achieved when:

- its natural range, and area it covers within that range, are stable or increasing, and
- the specific structure and functions which are necessary for its long-term maintenance exist and are likely to continue to exist for the foreseeable future, and
- the conservation status of its typical species is favourable.

The favourable conservation status of a species is achieved when:

- population dynamics data on the species concerned indicate that it is maintaining itself on a long-term basis as a viable component of its natural habitats, and
- the natural range of the species is neither being reduced nor is likely to be reduced for the foreseeable future, and
- there is, and will probably continue to be, a sufficiently large habitat to maintain its populations on a long-term basis.

Notes/Guidelines:

1. The targets given in these conservation objectives are based on best available information at the time of writing. As more information becomes available, targets for attributes may change. These will be updated periodically, as necessary.
2. An appropriate assessment based on these conservation objectives will remain valid even if the targets are subsequently updated, providing they were the most recent objectives available when the assessment was carried out. It is essential that the date and version are included when objectives are cited.
3. Assessments cannot consider an attribute in isolation from the others listed for that habitat or species, or for other habitats and species listed for that site. A plan or project with an apparently small impact on one attribute may have a significant impact on another.
4. Please note that the maps included in this document do not necessarily show the entire extent of the habitats and species for which the site is listed. This should be borne in mind when appropriate assessments are being carried out.
5. When using these objectives, it is essential that the relevant backing/supporting documents are consulted, particularly where instructed in the targets or notes for a particular attribute.

Qualifying Interests

* indicates a priority habitat under the Habitats Directive

000994 Ballyteige (Clare) SAC

6410 *Molinia* meadows on calcareous, peaty or clayey-silt-laden soils (Molinion caeruleae)

Supporting documents, relevant reports & publications

Supporting documents, NPWS reports and publications are available for download from: www.npws.ie/Publications

NPWS Documents

Year : 2013

Title : Irish semi-natural grasslands survey 2007-2012

Author : O'Neill, F.H.; Martin, J.R.; Devaney, F.M.; Perrin, P.M.

Series : Irish Wildlife Manuals, No. 78

Year : 2018

Title : The monitoring and assessment of three EU Habitats Directive Annex I grassland habitats

Author : Martin, J.R.; O'Neill, F.H.; Daly, O.H.

Series : Irish Wildlife Manuals, No. 102

Spatial data sources

Year : 2018

Title : Grasslands Monitoring Survey 2015-2017

GIS Operations : Dataset clipped to the SAC boundary. Expert opinion used as necessary to resolve any issues arising

Used For : 6410 (map 2)

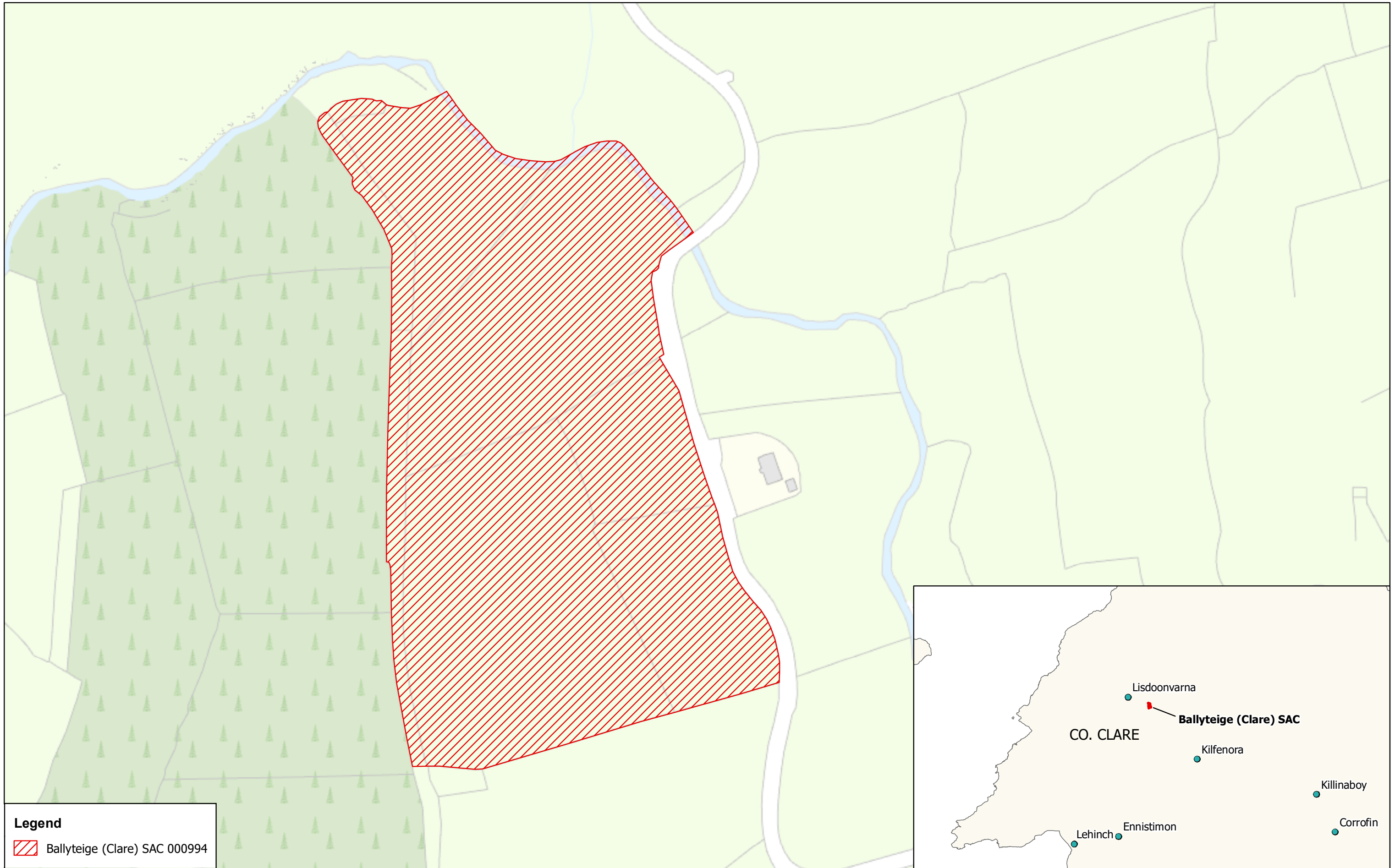
Conservation Objectives for : Ballyteige (Clare) SAC [000994]

6410 **Molinia meadows on calcareous, peaty or clayey-silt-laden soils (Molinion caeruleae)**

To restore the favourable conservation condition of *Molinia* meadows on calcareous, peaty or clayey-silt-laden soils (Molinion caeruleae) in Ballyteige (Clare) SAC, which is defined by the following list of attributes and targets:

Attribute	Measure	Target	Notes
Habitat area	Hectares	Area stable or increasing, subject to natural processes	<i>Molinia</i> meadows on calcareous, peaty or clayey-silt-laden soils (Molinion caeruleae) within Ballyteige (Clare) SAC was surveyed as part of the Irish Semi-natural Grassland Survey (ISGS; O'Neill et al., 2013) and the Grassland Monitoring Survey (GMS; Martin et al., 2018) in the survey site Ballyteige (ISGS/GMS site code 1603). An area of 5.6ha of the habitat was mapped by the GMS (Martin et al., 2018). See map 2
Habitat distribution	Occurrence	No decline, subject to natural processes	Distribution is based on the Grassland Monitoring Survey (Martin et al., 2018). See map 2
Vegetation composition: positive indicator species	Number at a representative number of 2m x 2m monitoring stops; within 20m surrounding area of monitoring stops	At least 7 positive indicator species present in monitoring stop or, if 5–6 present in stop, additional species within 20m of stop; this includes at least one 'high quality' positive indicator species present in the stop or within 20m of stop	Attribute and target based on O'Neill et al. (2013) and Martin et al. (2018), where the lists of positive indicator species, including high quality positive indicator species, are also presented. These documents should be consulted for further details. Note that purple moor-grass (<i>Molinia caerulea</i>) is a positive indicator species and should be present in at least one monitoring stop, or within 20m of a monitoring stop, for the attribute to pass (Martin et al., 2018). Note that Martin et al. (2018) mention two additional species which may be considered, should stops fail marginally on presence of indicators. The following positive indicators have been recorded: purple moor-grass, sharp-flowered rush (<i>Juncus acutiflorus</i>), meadowsweet (<i>Filipendula ulmaria</i>), tormentil (<i>Potentilla erecta</i>), star sedge (<i>Carex echinata</i>), devil's-bit scabious (<i>Succisa pratensis</i>), as well as orchids
Vegetation composition: negative indicator species	Percentage cover at a representative number of 2m x 2m monitoring stops	Negative indicator species collectively not more than 20% cover, with cover by an individual species not more than 10%	Attribute and target based on O'Neill et al. (2013) and Martin et al. (2018), where the lists of negative indicator species are presented
Vegetation composition: non-native species	Percentage cover at a representative number of 2m x 2m monitoring stops	Cover of non-native species not more than 1%	Attribute and target based on O'Neill et al. (2013) and Martin et al. (2018)
Vegetation composition: moss species	Percentage cover at a representative number of 2m x 2m monitoring stops	Hair mosses (<i>Polytrichum</i> spp.) not more than 25% cover	Attribute and target based on O'Neill et al. (2013) and Martin et al. (2018)
Vegetation composition: woody species and bracken	Percentage cover at a representative number of 2m x 2m monitoring stops	Cover of woody species and bracken (<i>Pteridium aquilinum</i>) not more than 5% cover	Attribute and target based on O'Neill et al. (2013) and Martin et al. (2018)
Vegetation structure: broadleaf herb:grass ratio	Percentage at a representative number of 2m x 2m monitoring stops	Broadleaf herb component of vegetation between 40% and 90%	Attribute and target based on O'Neill et al. (2013) and Martin et al. (2018). Broadleaf herb component of vegetation between 30% and 40% may be allowed to pass on expert judgement (Martin et al., 2018). The GMS recorded low cover of broadleaved herbs due to an undergrazed/undermanaged and rank sward (Martin et al., 2018)
Vegetation structure: sward height	Percentage at a representative number of 2m x 2m monitoring stops	At least 30% of sward between 10cm and 80cm tall	Attribute and target based on O'Neill et al. (2013) and Martin et al. (2018)

Vegetation structure: litter	Percentage cover at a representative number of 2m x 2m monitoring stops	Litter cover not more than 25%	Attribute and target based on O'Neill et al. (2013) and Martin et al. (2018). The GMS recorded high litter cover due to an undergrazed/undermanaged and rank sward (Martin et al., 2018)
Physical structure: bare ground	Percentage cover at a representative number of 2m x 2m monitoring stops	Not more than 10% bare ground	Attribute and target based on O'Neill et al. (2013) and Martin et al. (2018)
Physical structure: grazing or disturbance	Area in local vicinity of a representative number of monitoring stops	Area of the habitat showing signs of serious grazing or disturbance less than 20m ²	Attribute and target based on O'Neill et al. (2013) and Martin et al. (2018)



Legend

 Ballyteige (Clare) SAC 000994



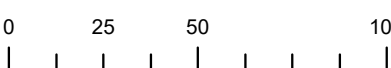
**An Roinn Tithíochta,
Rialtais Áitiúil agus Oidhreachta**
Department of Housing,
Local Government and Heritage

**MAP 1:
BALLYTEIGE (CLARE) SAC
CONSERVATION OBJECTIVES
SAC DESIGNATION**

Map to be read in conjunction with the NPWS Conservation Objectives Document


**SITE CODE:
SAC 000994; version 3.
CO. CLARE**

0 25 50 100 Metres

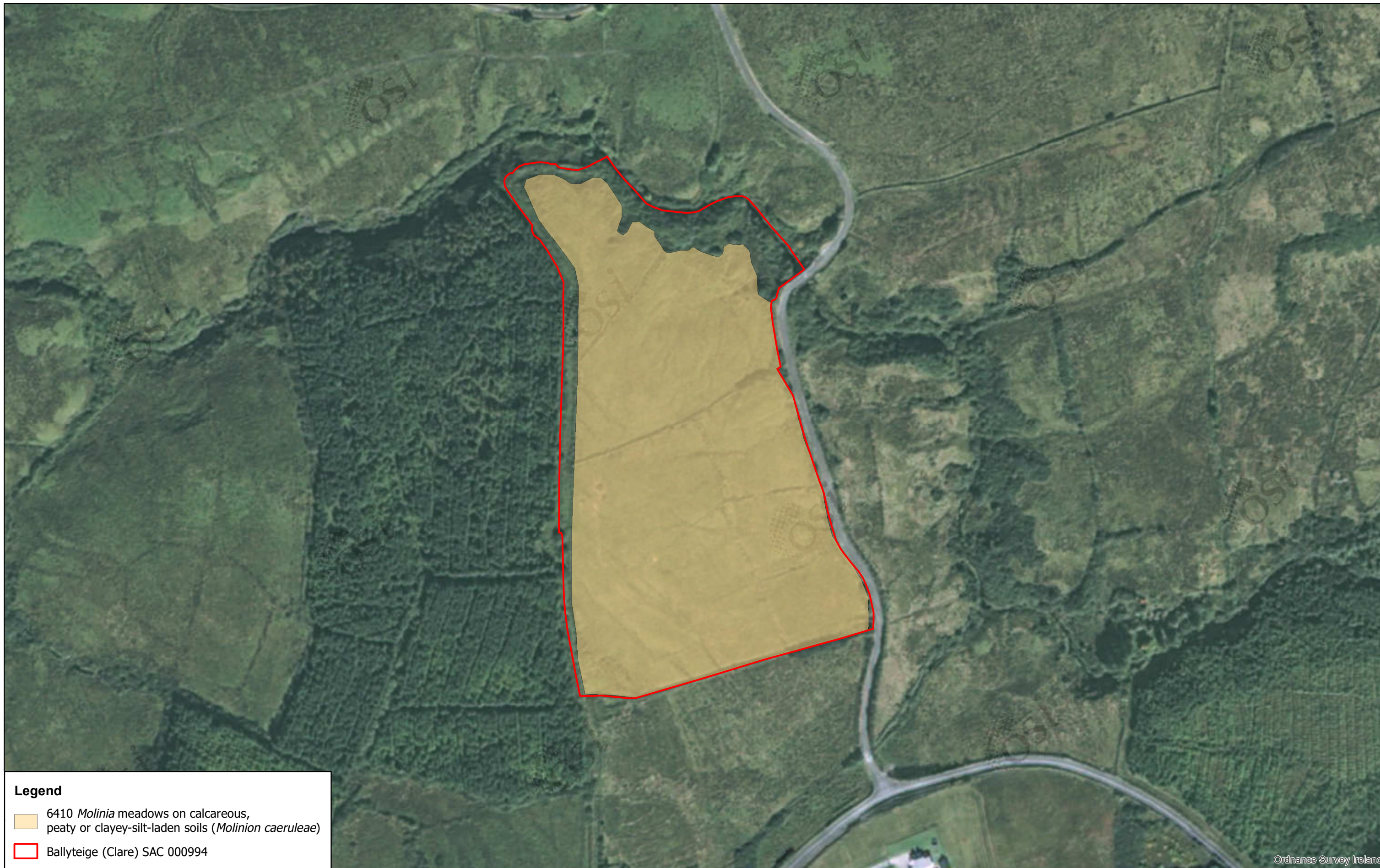


The mapped boundaries are of an indicative and general nature only. Boundaries of designated areas are subject to revision.
Ordnance Survey of Ireland Licence No OSI-NMA-014. © Ordnance Survey of Ireland Government of Ireland

Níl sna teorainneacha ar na léarscáileanna ach nod garshuíomhach ginearálta. Féadfar athbhreithnithe a déanamh ar theorainneacha na gceantar comharthaíthe. Suirbhéarachta Ordonáis na hÉireann Ceadúnas Uimh OSI-NMA-014. © Suirbhéarachta Ordonáis na hÉireann Rialtas na hÉireann



Date: October 2021



Legend

- 6410 *Molinia* meadows on calcareous, peaty or clayey-silt-laden soils (*Molinion caeruleae*)
- Ballyteige (Clare) SAC 000994

Ordnance Survey Ireland

**An Roinn Tithíochta,
Rialtais Áitiúil agus Oidhreachta**
Department of Housing,
Local Government and Heritage

**MAP 2:
BALLYTEIGE (CLARE) SAC
CONSERVATION OBJECTIVES
GRASSLAND HABITATS**

Map to be read in conjunction with the NPWS Conservation Objectives Document

**SITE CODE:
SAC 000994; version 3.
CO. CLARE**

0 25 50 100 Metres

The mapped boundaries are of an indicative and general nature only. Boundaries of designated areas are subject to revision.
Ordnance Survey of Ireland Licence No OSI-NMA-014. © Ordnance Survey of Ireland Government of Ireland

Níl sna teorainneacha ar na léarscáileanna ach nod garshuíomhach ginearálta. Féadfar athbhreithnithe a déanamh ar theorainneacha na gceantar comharthaíthe. Suirbhéarachta Ordonáis na hÉireann Ceadúnas Uimh OSI-NMA-014. © Suirbhéarachta Ordonáis na hÉireann Rialtas na hÉireann

N

Date: October 2021