

National Parks and Wildlife Service

Conservation Objectives Series

Lisnageeragh Bog and Ballinastack Turlough SAC
000296



An Roinn
Ealaíon, Oidhreachta agus Gaeltachta

Department of
Arts, Heritage and the Gaeltacht



**National Parks and Wildlife Service,
Department of Arts, Heritage and the Gaeltacht,
7 Ely Place, Dublin 2, Ireland.
Web: www.npws.ie
E-mail: nature.conservation@ahg.gov.ie**

Citation:

**NPWS (2016) Conservation Objectives: Lisnageeragh Bog and Ballinastack
Turlough SAC 000296. Version 1. National Parks and Wildlife Service,
Department of Arts, Heritage and the Gaeltacht.**

**Series Editor: Rebecca Jeffrey
ISSN 2009-4086**

Introduction

The overall aim of the Habitats Directive is to maintain or restore the favourable conservation status of habitats and species of community interest. These habitats and species are listed in the Habitats and Birds Directives and Special Areas of Conservation and Special Protection Areas are designated to afford protection to the most vulnerable of them. These two designations are collectively known as the Natura 2000 network.

European and national legislation places a collective obligation on Ireland and its citizens to maintain habitats and species in the Natura 2000 network at favourable conservation condition. The Government and its agencies are responsible for the implementation and enforcement of regulations that will ensure the ecological integrity of these sites.

A site-specific conservation objective aims to define favourable conservation condition for a particular habitat or species at that site.

The maintenance of habitats and species within Natura 2000 sites at favourable conservation condition will contribute to the overall maintenance of favourable conservation status of those habitats and species at a national level.

Favourable conservation status of a habitat is achieved when:

- its natural range, and area it covers within that range, are stable or increasing, and
- the specific structure and functions which are necessary for its long-term maintenance exist and are likely to continue to exist for the foreseeable future, and
- the conservation status of its typical species is favourable.

The favourable conservation status of a species is achieved when:

- population dynamics data on the species concerned indicate that it is maintaining itself on a long-term basis as a viable component of its natural habitats, and
- the natural range of the species is neither being reduced nor is likely to be reduced for the foreseeable future, and
- there is, and will probably continue to be, a sufficiently large habitat to maintain its populations on a long-term basis.

Notes/Guidelines:

1. The targets given in these conservation objectives are based on best available information at the time of writing. As more information becomes available, targets for attributes may change. These will be updated periodically, as necessary.
2. An appropriate assessment based on these conservation objectives will remain valid even if the targets are subsequently updated, providing they were the most recent objectives available when the assessment was carried out. It is essential that the date and version are included when objectives are cited.
3. Assessments cannot consider an attribute in isolation from the others listed for that habitat or species, or for other habitats and species listed for that site. A plan or project with an apparently small impact on one attribute may have a significant impact on another.
4. Please note that the maps included in this document do not necessarily show the entire extent of the habitats and species for which the site is listed. This should be borne in mind when appropriate assessments are being carried out.
5. When using these objectives, it is essential that the relevant backing/supporting documents are consulted, particularly where instructed in the targets or notes for a particular attribute.

Qualifying Interests

** indicates a priority habitat under the Habitats Directive*

000296 Lisnageeragh Bog and Ballinastack Turlough SAC

3180 TurloughsE

7110 Active raised bogsE

7120 Degraded raised bogs still capable of natural regeneration

7150 Depressions on peat substrates of the Rhynchosporion

Supporting documents, relevant reports & publications

Supporting documents, NPWS reports and publications are available for download from: www.npws.ie/Publications

NPWS Documents

Year :	2014
Title :	Raised Bog Monitoring and Assessment Survey 2013
Author :	Fernandez, F.; Connolly K.; Crowley W.; Denyer J.; Duff K.; Smith G.
Series :	Irish Wildlife Manual No. 81
<hr/>	
Year :	2014
Title :	Lisnageeragh Bog (SAC 000296), Co. Galway, Site Report
Author :	Fernandez, F.; Connolly, K.; Crowley, W.; Denyer J.; Duff K.; Smith G.
Series :	Raised bog monitoring and assessment survey 2013
<hr/>	
Year :	2014
Title :	National raised bog SAC management plan
Author :	Department of Arts, Heritage and the Gaeltacht
Series :	Draft for consultation. 15 January 2014
<hr/>	
Year :	2016
Title :	Lisnageeragh Bog and Ballinastack Turlough SAC (site code: 296) Conservation objectives supporting document- raised bog habitats V1
Author :	NPWS
Series :	Conservation objectives supporting document
<hr/>	
Year :	2016
Title :	Lisnageeragh Bog and Ballinastack Turlough SAC (site code: 296) Conservation objectives supporting document- turloughs V1
Author :	NPWS
Series :	Conservation objectives supporting document

Other References

Year :	2011
Title :	Review and revision of empirical critical loads and dose-response relationships. Proceedings of an expert workshop, Noordwijkerhout, 23-25 June 2010
Author :	Bobbink, R.; Hettelingh, J.P.
Series :	RIVM report 680359002, Coordination Centre for Effects, National Institute for Public Health and the Environment (RIVM)
<hr/>	
Year :	2014
Title :	Nitrogen deposition and exceedance of critical loads for nutrient nitrogen in Irish grasslands
Author :	Henry, J.; Aherne, J.
Series :	Science of the Total Environment 470-471: 216-223

Spatial data sources

Year :	2016
Title :	Goodwillie (1992) Turloughs over 10 hectares: vegetation survey and evaluation
GIS Operations :	Goodwillie map scanned and georectified. Turlough as outlined on map digitised. New Turlough dataset clipped to SAC Boundary. Expert opinion used as necessary to resolve any issues arising
Used For :	3180 (map 2)
<hr/>	
Year :	2014
Title :	Scientific Basis for Raised Bog Conservation in Ireland
GIS Operations :	RBSB13_SACs_ARB_DRB dataset, RBSB13_SACs_2012_HB dataset, RBSB13_SACs_DrainagePatterns_5k dataset and RBSB13_SAC_LIDAR_DTMs dataset clipped to SAC boundary. Expert opinion used as necessary to resolve any issues arising
Used For :	potential 7110; digital elevation model; drainage patterns (maps 3 and 5)
<hr/>	
Year :	2013
Title :	Raised Bog Monitoring and Assessment Survey 2013
GIS Operations :	RBMA13_ecotope_map dataset clipped to SAC boundary. Appropriate ecotopes selected and exported to new dataset. Expert opinion used as necessary to resolve any issues arising
Used For :	7110 ecotopes (map 4)
<hr/>	

3180 Turloughs

To maintain the favourable conservation condition of Turloughs in Lisnageeragh Bog and Ballinastack Turlough SAC, which is defined by the following list of attributes and targets:

Attribute	Measure	Target	Notes
Habitat area	Hectares	Area stable or increasing, subject to natural processes	Current mapped area of Ballinastack Turlough is 23.7ha. See map 2. See turloughs supporting document for further details
Habitat distribution	Occurrence	No decline, subject to natural processes	The location of Ballinastack Turlough is shown in map 2. See turloughs supporting document for further details
Hydrological regime: flood duration, frequency, area, depth; permanently flooded area	Various	Maintain/restore appropriate natural hydrological regime necessary to support the natural structure and functioning of the habitat	Hydrological regime is sub-divided into more detailed attributes in the turloughs supporting document
Soil type: area	Hectares	Maintain variety, area and extent of soil types necessary to support turlough vegetation and other biota	See turloughs supporting document for further details
Soil nutrient status: nitrogen and phosphorous	N and P concentration in soil	Maintain/restore nutrient status appropriate to soil types	See turloughs supporting document for further details
Physical structure: bare ground	Presence	Maintain sufficient wet bare ground, as appropriate	See turloughs supporting document for further details
Chemical processes: calcium carbonate deposition and concentration	CaCO ₃ deposition rate/soil concentration	Maintain CaCO ₃ deposition rate/soil concentration	See turloughs supporting document for further details
Water quality: nutrients; colour; phytoplankton; epiphyton	Various	Maintain appropriate water quality to support the natural structure and functioning of the habitat	Water quality is sub-divided into more detailed attributes in the turloughs supporting document
Active peat formation	Flood duration	Restore active peat formation, where appropriate	See turloughs supporting document for further details
Vegetation composition: area of vegetation communities	Hectares	Maintain area of sensitive and high conservation value vegetation communities/units	See turloughs supporting document for further details
Vegetation composition: vegetation zonation	Distribution	Maintain vegetation zonation/mosaic characteristic of the site	See turloughs supporting document for further details
Vegetation structure: sward height	Centimetres	Maintain sward heights appropriate to the vegetation unit, and a variety of sward heights across the turlough	See turloughs supporting document for further details
Typical species: terrestrial, wetland and aquatic plants, invertebrates and birds	Presence	Maintain typical species	Typical species is sub-divided into more detailed attributes in the turloughs supporting document
Fringing habitats: area	Hectares	Maintain marginal fringing habitats that support turlough vegetation, invertebrate, mammal and/or bird populations	See turloughs supporting document for further details. See also the conservation objective for Active raised bogs (7110)

Vegetation
structure:
turlough
woodland

Species diversity and
woodland structure

Maintain appropriate
turlough woodland
diversity and structure

See turloughs supporting document for further
details

7110 Active raised bogs

To restore the favourable conservation condition of Active raised bogs in Lisnageeragh Bog and Ballinastack Turlough SAC, which is defined by the following list of attributes and targets:

Attribute	Measure	Target	Notes
Habitat area	Hectares	Restore area of active raised bog to 58.8ha, subject to natural processes	Active Raised Bog (ARB) habitat was mapped at 29.6ha by Fernandez et al. (2014). Area of Degraded Raised Bog (DRB) on the High Bog (HB) has been modelled as 38.0ha. See map 3. However, it is estimated that only 26.6ha is potentially restorable to ARB by drain blocking. The total potential ARB on the HB is therefore estimated to be 56.2ha. Eco-hydrological assessments of the cutover estimates that an additional 2.6ha of bog forming habitats could be restored. The long term target for ARB is therefore 58.8ha. See raised bog supporting document for further details on this and following attributes
Habitat distribution	Occurrence	Restore the distribution and variability of active raised bog across the SAC. See map 4 for distribution in 2012	ARB habitat at Lisnageeragh Bog is central and sub-central ecotopes and active flush. ARB currently occurs mainly in the south-central part of the bog. DRB occurs on both the south-central and northern parts of the bog, which will require restoration measures. There is also potential for ARB restoration on cutover areas of the bog (see area target above)
High bog area	Hectares	No decline in extent of high bog necessary to support the development and maintenance of active raised bog. See map 3	The area of high bog within Lisnageeragh Bog SAC in 2012 (latest figure available) was 269.5ha (DAHG, 2014)
Hydrological regime: water levels	Centimetres	Restore appropriate water levels throughout the site	For ARB, mean water level needs to be near or above the surface of the bog lawns for most of the year. Seasonal fluctuations should not exceed 20cm, and should only be 10cm below the surface, except for very short periods of time. Open water is often characteristic of soak systems
Hydrological regime: flow patterns	Flow direction; slope	Restore, where possible, appropriate high bog topography, flow directions and slopes. See map 5 for current situation	ARB depends on mean water levels being near or above the surface of bog lawns for most of the year. Long and gentle slopes are the most favourable to achieve these conditions. Changes to flow directions due to subsidence of bogs can radically change water regimes and cause drying out of high quality ARB areas and soak systems
Transitional areas between high bog and adjacent mineral soils (including cutover areas)	Hectares; distribution	Restore adequate transitional areas to support/protect active raised bog and the services it provides	Studies suggest that the ARB is threatened due to water loss from past drainage and peat-cutting at Lisnageeragh Bog. Only remnant semi-natural margins occur between the bog and the turlough in the north of the SAC. See also the conservation objective for Turloughs (3180). Eco-hydrological assessments have evaluated the potential for ARB restoration on cutover areas (see note for habitat area attribute above)
Vegetation quality: central ecotope, active flush, soaks, bog woodland	Hectares	Restore 29.4ha of central ecotope/active flush/soaks/bog woodland as appropriate	At least 50% of ARB habitat should be high quality (i.e. central ecotope, active flush, soaks, bog woodland). Target area of active raised bog for the site has been set at 58.8ha (see area target above)
Vegetation quality: microtopographical features	Hectares	Restore adequate cover of high quality microtopographical features	High quality microtopography (hummocks, hollows and pools) is well developed in the southern part of Lisnageeragh Bog

Vegetation quality: bog moss (<i>Sphagnum</i>) species	Percentage cover	Restore adequate cover of bog moss (<i>Sphagnum</i>) species to ensure peat-forming capacity	<i>Sphagnum</i> cover varies naturally across Ireland with relatively high cover in the east to lower cover in the west. Hummock forming species such as <i>Sphagnum austini</i> are particularly good peat formers. <i>Sphagnum</i> cover and distribution also varies naturally across a site
Typical ARB species: flora	Occurrence	Restore, where appropriate, typical active raised bog flora	Typical flora species include widespread species, as well as those with more restricted distributions but typical of the habitat's subtypes or geographical range
Typical ARB species: fauna	Occurrence	Restore, where appropriate, typical active raised bog fauna	Typical fauna species include widespread species, as well as those with more restricted distributions but typical of the habitat's subtypes or geographical range
Elements of local distinctiveness	Occurrence	Maintain features of local distinctiveness, subject to natural processes	Lisnageeragh Bog is noted for the presence of a number of flushes on the high bog and the transition to turlough in the northern part of the SAC
Negative physical indicators	Percentage cover	Negative physical features absent or insignificant	Negative physical indicators include: bare peat, algae dominated pools and hollows, marginal cracks, tear patterns, subsidence features such as dry mineral mounds /ridges emerging or expanding and evidence of burning
Vegetation composition: native negative indicator species	Percentage cover	Native negative indicator species at insignificant levels	Disturbance indicators include species indicative of conditions drying out such as abundant bog asphodel (<i>Narthecium ossifragum</i>), deergrass (<i>Trichophorum germanicum</i>) and harestalk cotton-grass (<i>Eriophorum vaginatum</i>) forming tussocks; abundant magellanic bog-moss (<i>Sphagnum magellanicum</i>) in pools previously dominated by <i>Sphagnum</i> species typical of very wet conditions (e.g. feathery bog-moss (<i>S. cuspidatum</i>)); and indicators of frequent burning events such as abundant <i>Cladonia floerkeana</i> and high cover of carnation sedge (<i>Carex panicea</i>) (particularly in true midlands raised bogs)
Vegetation composition: non-native invasive species	Percentage cover	Non-native invasive species at insignificant levels and not more than 1% cover	Most common non-native invasive species include lodgepole pine (<i>Pinus contorta</i>), rhododendron (<i>Rhododendron ponticum</i>) and pitcherplant (<i>Sarracenia purpurea</i>)
Air quality: nitrogen deposition	kg N/ha/year	Air quality surrounding bog close to natural reference conditions. The total N deposition should not exceed 5kg N/ha/yr	Change in air quality can result from fertiliser drift; adjacent quarry activities; or other atmospheric inputs. The critical load range for ombrotrophic bogs has been set as between 5 and 10kg N/ha/yr (Bobbink and Hettelingh, 2011). The latest N deposition figures for the area around Lisnageeragh Bog suggests that the current level is approximately 11.4kg N/ha/yr (Henry and Aherne, 2014)
Water quality	Hydrochemical measures	Water quality on the high bog and in transitional areas close to natural reference conditions	Water chemistry within raised bogs is influenced by atmospheric inputs (rainwater). However, within soak systems, water chemistry is influenced by other inputs such as focused flow or interaction with underlying substrates. Water chemistry in areas surrounding the high bog varies due to influences of different water types (bog water, regional groundwater and run-off from surrounding mineral lands)

Conservation Objectives for : Lisnageeragh Bog and Ballinastack Turlough SAC [000296]

7120 Degraded raised bogs still capable of natural regeneration

The long-term aim for Degraded raised bogs still capable of natural regeneration is that its peat-forming capability is re-established; therefore, the conservation objective for this habitat is inherently linked to that of Active raised bogs (7110) and a separate conservation objective has not been set in Lisnageeragh Bog and Ballinastack Turlough SAC

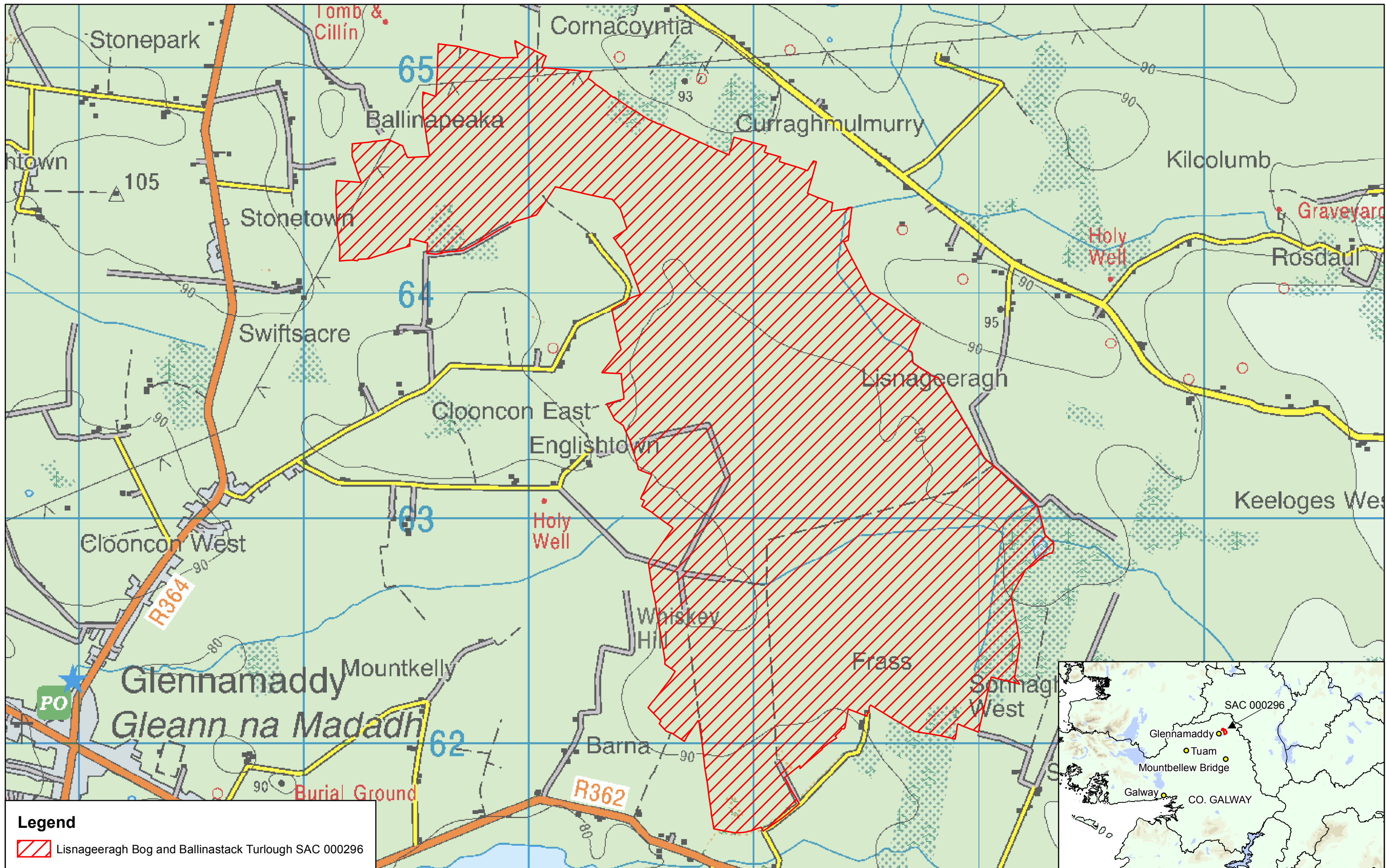
Attribute	Measure	Target	Notes
------------------	----------------	---------------	--------------


Conservation Objectives for : Lisnageeragh Bog and Ballinastack Turlough SAC [000296]


7150 Depressions on peat substrates of the Rhynchosporion

Depressions on peat substrates of the Rhynchosporion is an integral part of good quality Active raised bogs (7110) and thus a separate conservation objective has not been set for the habitat in Lisnageeragh Bog and Ballinastack Turlough SAC

Attribute	Measure	Target	Notes
-----------	---------	--------	-------



Legend
 Lisnageeragh Bog and Ballinastack Turlough SAC 000296

 *An Roinn Ealaíon, Oidhreachta agus Gaeltachta*
 Department of Arts, Heritage and the Gaeltacht

MAP 1:
LISNAGEERAGH BOG AND BALLINASTACK TURLOUGH SAC CONSERVATION OBJECTIVES SAC DESIGNATION
 Map to be read in conjunction with the NPWS Conservation Objectives Document.

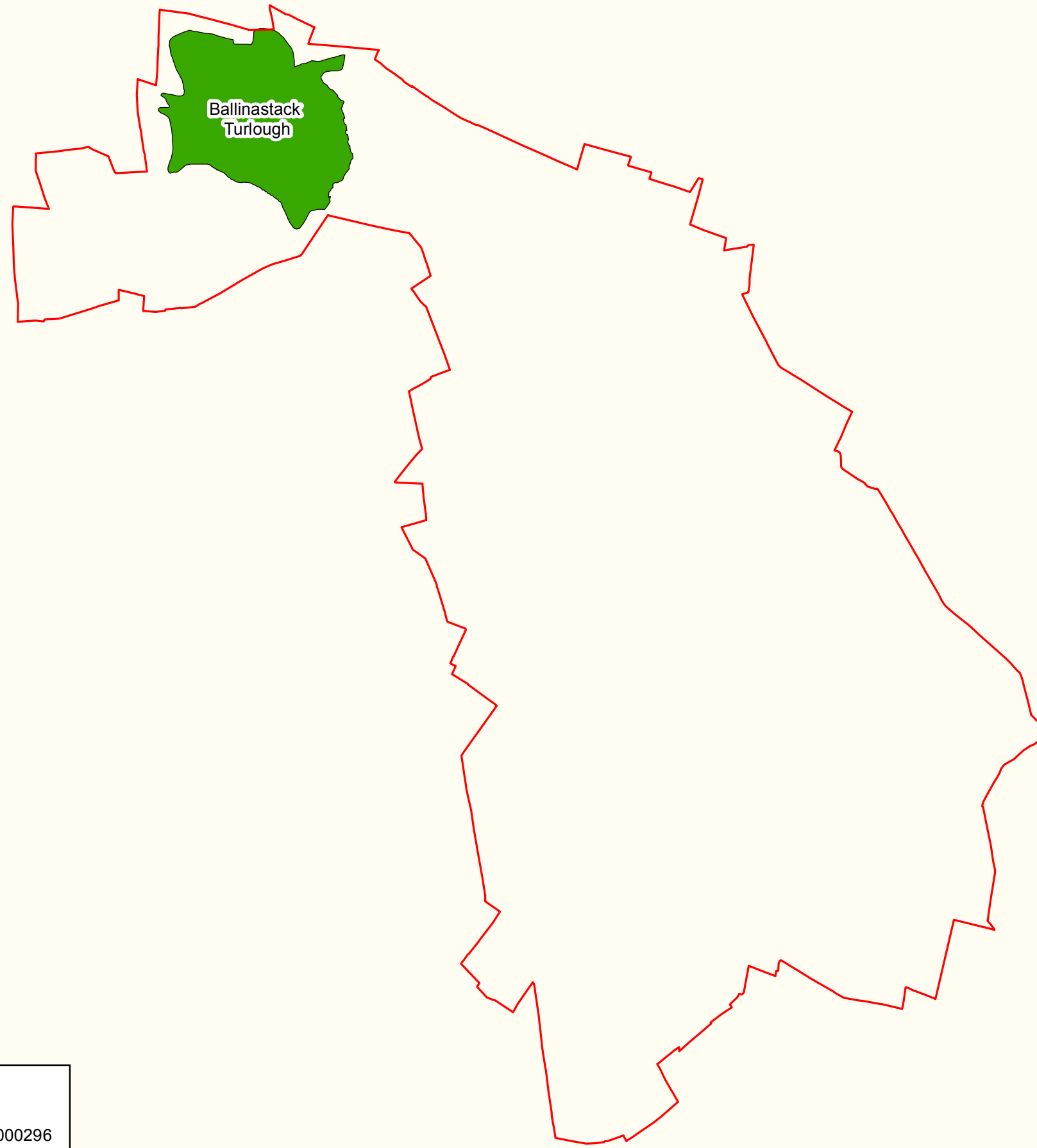
SITE CODE:
SAC 000296; version 3. Co. Galway

0 250 500 750 1,000 m

The mapped boundaries are of an indicative and general nature only. Boundaries of designated areas are subject to revision.
 Ordnance Survey of Ireland Licence No EN 0059216. © Ordnance Survey of Ireland Government of Ireland.

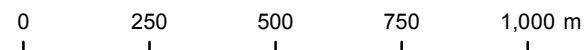
Níl sna teorainneacha ar na léarscáileanna ach nod garshuimhach ginearálta. Féadfar athbheithnihe a déanamh ar theorainneacha na gceantar comharthaite. Suirbhéarachta Ordonáis na hÉireann Ceadúnas Uimh EN 0059216. © Suirbhéarachta Ordonáis na hÉireann Rialtas na hÉireann.

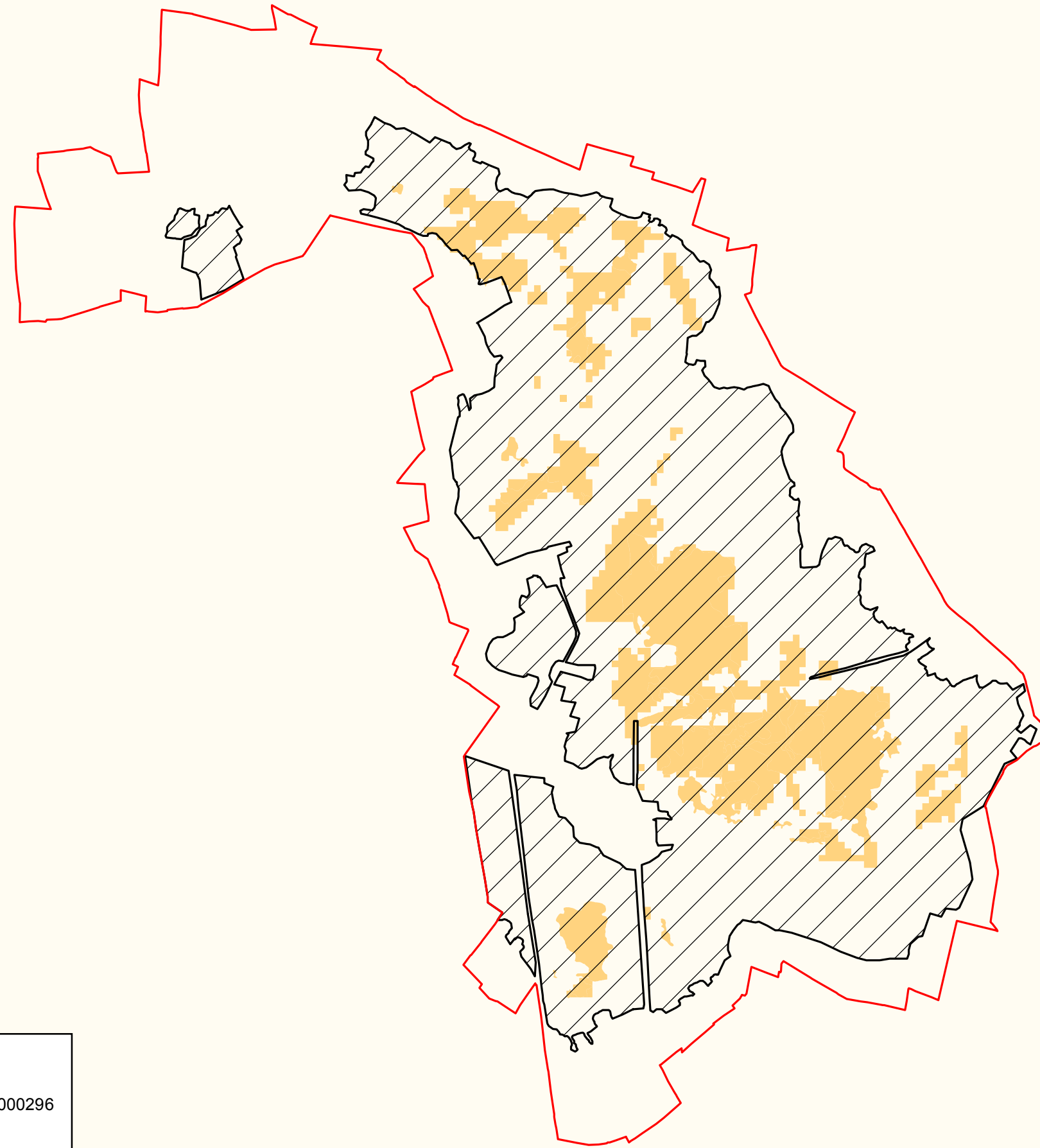

Map Version 1
Date: March 2016



Legend

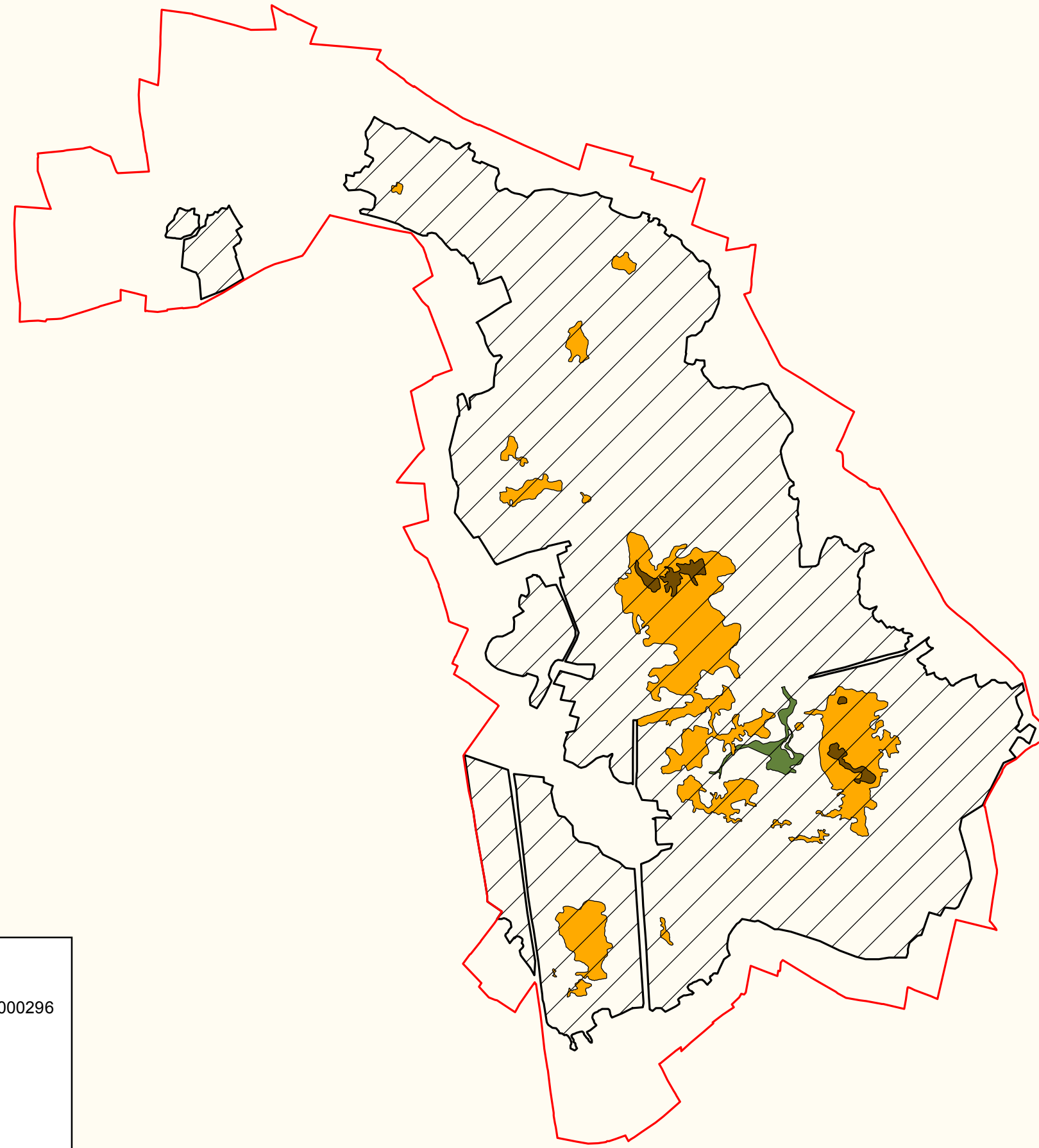
- Lisnageeragh Bog and Ballinastack Turlough SAC 000296
- 3180 *Turloughs





Legend

- Lisnageeragh Bog and Ballinastack Turlough SAC 000296
- High Bog Boundary
- Potential 7110 *Active Raised Bogs



Legend

Lisnageeragh Bog and Ballinastack Turlough SAC 000296

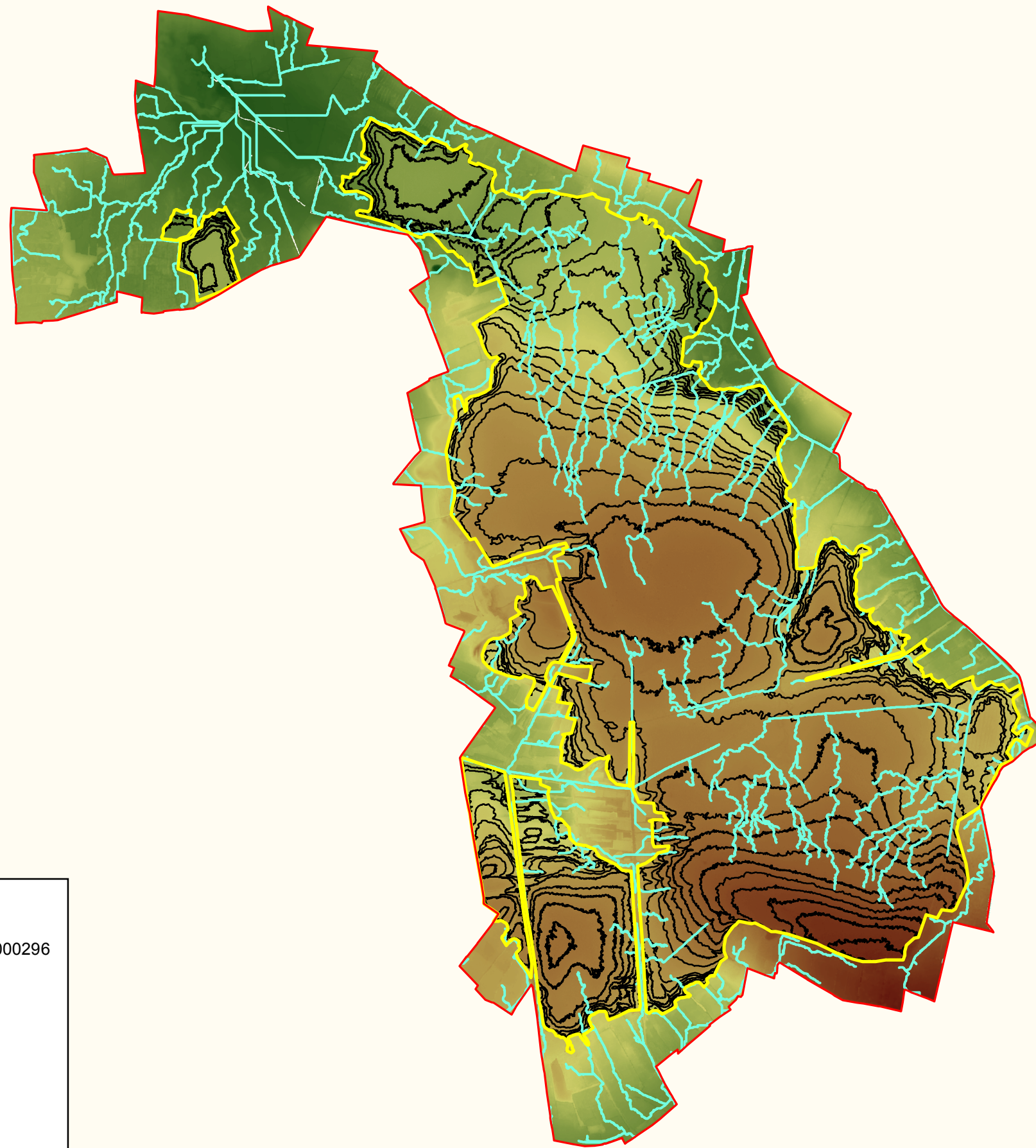
High Bog Boundary

Active Raised Bogs Ecotopes

Central ecotope

Soaks / active flush

Sub-central ecotope



Legend

- Lisnageeragh Bog and Ballinastack Turlough SAC 000296
- High Bog Boundary
- Drainage Patterns
- Contours

Elevation

