

Ref: POL/POL/Project No.23765

Date; 21<sup>st</sup> August 2025

**Re: Planning Ref 24/60025 - Raised Platform Walkway / Cycleway**  
**Subject: Topographical Survey**

### *Introduction*

MWP, on behalf of the NPWS, commissioned Murphy Geospatial Ltd, Unit 21 – Airport East Business Park, Farmers Cross, Cork, T12 T256, to carry out a detailed topographical survey of the site area which encompassed all of the route options for the proposed Dinis to Torc car park walkway/cycleway.

### *Survey Scope*

The purpose of this survey was to provide an accurate representation of the land's surface and notable features thereon to facilitate the planning, engineering assessment, route option and design for the proposed Dinis to Torc car park walkway/cycleway.

The scope of the survey within the defined site area was as follows.

- N71 Road edge and centreline and low walling on lakeside at 10m intervals
- Dinis car park and Torc car parks.
- Trees, hedges and scrub areas
- Rock and boulder features
- Existing walkway trail within survey area.
- Lake shoreline and water level.
- Lakebed level adjacent to shoreline for a distance of 25m beyond shoreline.
- Existing signage.
- Contours at 0.5m intervals.

### *Survey Methodology*

The topographical survey was carried out using a combination of two separate total station systems – one being a Trimble S5 Total station and the other being a scanning Trimble SX10 Total Station. These were further supported utilizing RS12i GPS systems. The hydrographical works were completed via an inflatable dingy and outboard engine launched from the shore and Trimble GPS utilized for collection of data.

***Survey Details***

The survey was undertaken by Murphy Geospatial during September 2023.

The survey was based on the installed survey control and relate to the Ordnance Survey ITM(15) Grid and Malin Head Datum.

***Survey output***

The survey output was issued in autocad and pdf formats. (copies attached)

***Survey Benefits***

The topographical outputs provided MWP with details of spot levels, contours, tree locations, rock features, roadway layout, paths and shoreline position.

This information was used to assess the various route options and ultimately informed the design principle for the proposed raised platform walkway/cycleway and preferred route option.

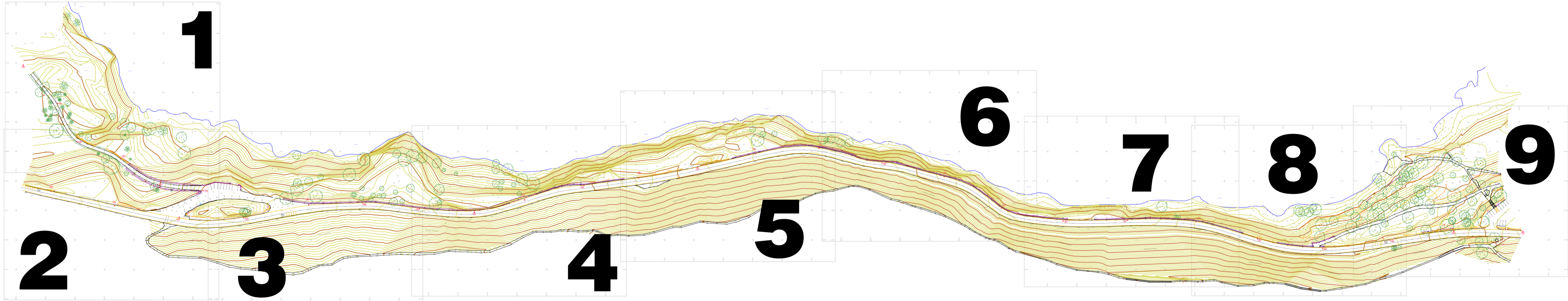
An Ariel Drone Survey was made available to MWP. However, this was use purely as a visual overview of the site. It did not provide any engineering technical outputs. Hence the requirement for the topographical survey. A link to the drone footage is included hereunder.

[Proposed walk Dinis to Lower Torc.mov](#)



---

for MWP

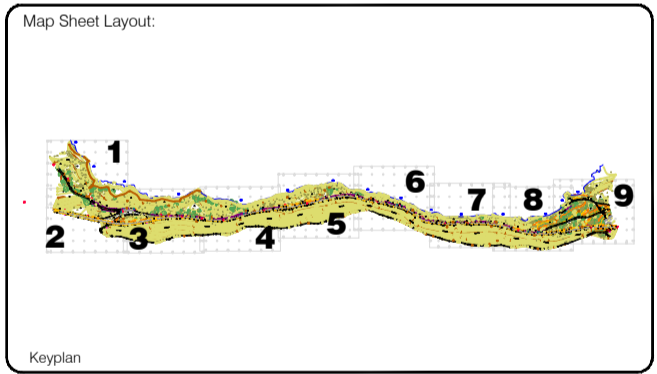


**Murphy Survey Ltd. Disclaimer**

The user or recipient of this survey data understands and acknowledges this data may be inaccurate or contain errors or omissions and the user or recipient assumes full responsibility for any claims or damages resulting from, arising from, or in connection with any use of or reliance on the data. The user or recipient acknowledges that the user or recipient will produce surveys that satisfy survey accuracy standards: these surveys are only as accurate as the source data from which they were compiled. Although all reasonable steps have been taken to locate all features visible at the time of the survey, there is no guarantee that all will be shown on the drawing, as the user or recipient has not been instructed to do this. Wherever possible, accurate, unable to be surveyed will be labelled as "UTS".

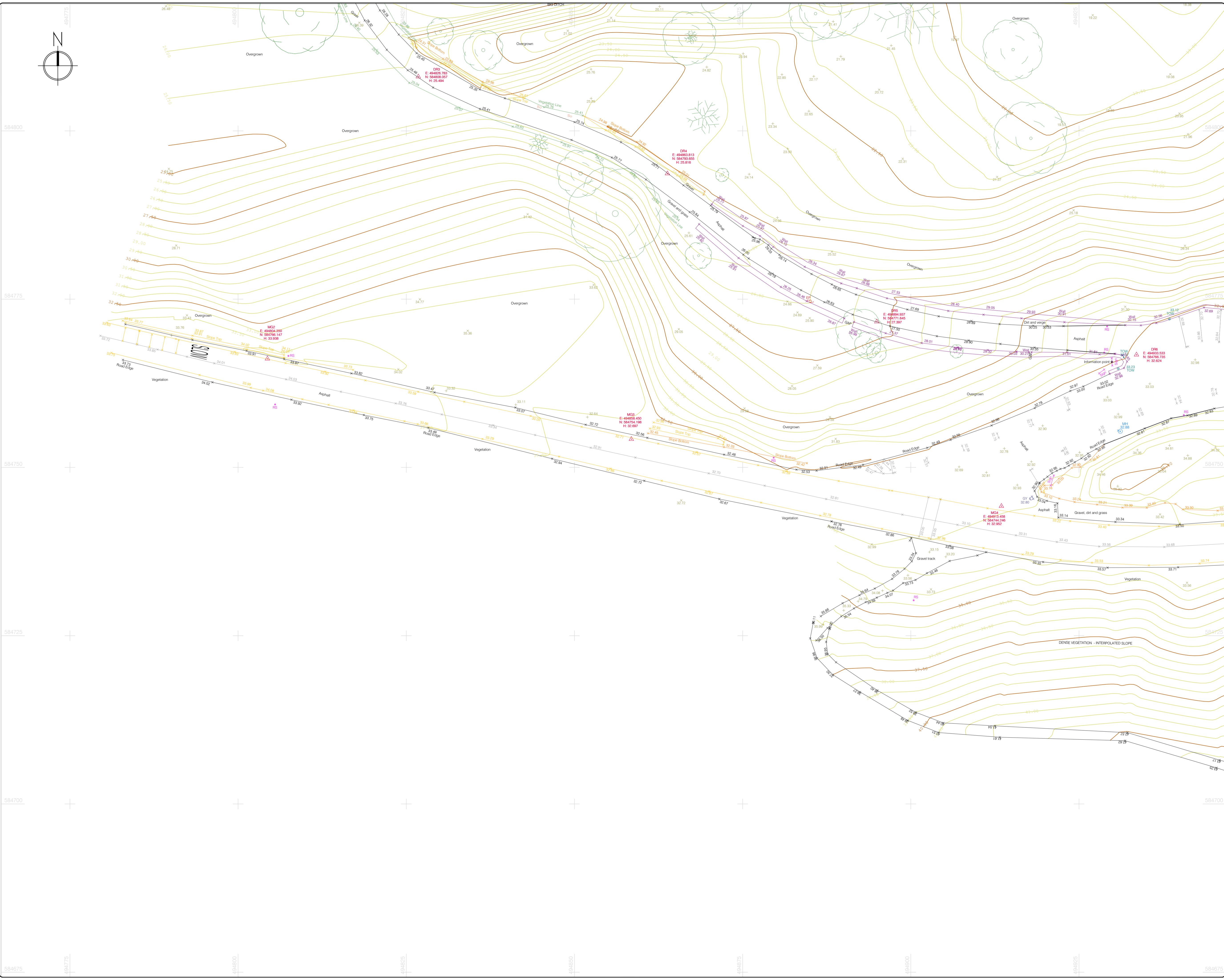
The Company shall not be liable for any inaccuracies of the data provided beyond the specified scale or accuracy, or for any reliance of the user for purposes other than that stated in the Contract. No liability shall the Surveyor in respect of any consequential loss or damages suffered by the Client.

The Client must promptly notify the Company of any errors in mapping of which it becomes aware. If misleading, inaccurate or otherwise inappropriate information is brought to the Company's attention or the Company itself identifies any such improvement or error in a survey, it shall use its reasonable endeavours to fix or remove it and it is necessary in certain instances, the Company being on notice of any such misleading, inaccurate or otherwise inappropriate information, will re-conduct the survey and reproduce the data within the specified scale or accuracy.



© Copyright 2023 MURPHY GEOSPATIAL LTD

[illegible]



### LEGEND

#### Street furniture & Services

5.12 Over Head Wires (LIAS) - Pylon ESB	5.12 Road Sign	5.12 Phone Box
5.12 Flowerbed	5.12 Bus Stop	5.12 Bench Seat
5.12 Pipe	5.12 Bollard	5.12 Kiosk
5.12 Lift	5.12 Beacon	5.12 Gully
5.12 Barrier	5.12 Coalhole Cover	5.12 US Car Park Vent
5.12 Pump	5.12 Bore Hole	5.12 Waste Bin
5.12 Trial Pit	5.12 Electricity Pole	5.12 Hydrant
5.12 Bus/Tram Shelter	5.12 Telegraph pole	5.12 Fire Hydrant
5.12 Postbox	5.12 CCTV Camera Pole	5.12 ESB Box
5.12 Valve - General	5.12 Lamp Post	5.12 ESB Inspection Cover
5.12 Gas Valve	5.12 Foul Manhole	5.12 Traffic Control Box
5.12 Sluice Valve	5.12 Surface Water Mh	5.12 Traffic Technical Cubicle
5.12 Air Valve	5.12 Manholes	5.12 Ticket Vending Machine
5.12 Stop Cook	5.12 Air Conditioning Vents	5.12 Water Meter Cover
5.12 C/P Post	5.12 Services Inspection Cover	5.12 Telecom Inspection Cover
5.12 Marker Post	5.12 Traffic Inspection Cover	5.12 Monument / Toilets
5.12 Traffic Light	5.12 Cable TV Inspection Cover	5.12 Tank Storage
5.12 Parking Meter	5.12 ESB Inspection Cover	5.12 Basement: Mh, Cover & Pipe
5.12 Plane Aerial Mark	5.12 NTL Inspection Cover	5.12 Stay for pole
5.12 Small Card Validator	5.12 Ecom Inspection Cover	5.12 Washout
5.12 Unknown Valve	5.12 Rodding Eye	5.12

#### Natural Features

5.12 Surface Change	5.12 Water Level	5.12 Golf
5.12 Land Drain	5.12 Crown Level	5.12 Fair Way
5.12 Bottom of Slope	5.12 Invert Level	5.12 Green
5.12 Top of Slope	5.12 Bed Level	5.12 Tree Box
5.12 Ditch	5.12 Spotheight	5.12 Other
5.12 Water Edge / Lake / Pond	5.12 Hodge / Trees Drip Line / Vegetation	5.12 Tree Deciduous
5.12 Tree Coniferous	5.12 Tree Top of Tree	5.12

#### Built Features

##### Roads & Road Markings

5.12 Building	5.12 Fence	5.12 Floor Level
5.12 Edge of Road	5.12 Gate	5.12 Apex Height
5.12 Kerb Bottom	5.12 Road Centreline	5.12 Eaves Height
5.12 Kerb Top	5.12 Top of Wall	5.12 Parapet Height
5.12 Bridge Abutment	5.12 Hoarding	5.12 Soft Elevation
5.12 Bridge Deck	5.12 Bridge Pier	5.12 Property Line
5.12 Building Footing	5.12 Road Edge	5.12 Concrete Pad
5.12 Footpath / Platform Train & Tram	5.12 Wall / Retaining Wall	5.12 Track
5.12 Damp Proof Course / Veep	5.12 Railway / Tram Rail / Grating / Ramp	5.12
5.12 Bridge Pier / Wall & Gate Pillar / LIAS Tracelab	5.12 Building Canopy / Roof / Overhang	5.12
5.12 Cycleway / Private Landing Area	5.12	5.12

##### Other

5.12 Survey Station	5.12 Photo point
---------------------	------------------

Murphy Surveys Ltd. Disclaimer

The user or recipient of this survey data understands and acknowledges this data may be inaccurate or contain errors or omissions and the user or recipient assumes full responsibility for any risks or damages resulting from, arising from, or in connection with any use of or reliance upon data displayed herein. Although significant care has been exercised to produce surveys that satisfy survey accuracy standards, these surveys are only as accurate as the source data from which they were compiled. Although all reasonable steps have been taken to locate all features visible at the time of the survey, there is no guarantee that all will be shown on the drawing, as some above ground features may have obstructed the survey. Wherever possible, areas unable to be surveyed will be labelled as "UTS".

The Company shall not be liable for any inaccuracy of the data provided beyond the specified scale or accuracy, or for any matters resulting from their use for purposes other than that stated in the Contract. No liability shall attach to the Surveyor in respect of any consequential loss or damages suffered by the Client.

The Client must promptly notify the Company of any errors in mapping of which it becomes aware. If misleading, inaccurate or otherwise inappropriate information is brought to the Company's attention or the Company itself identifies any such impression or error in a survey, it shall use its reasonable endeavours to fix or remove it and if necessary in certain instances, the Company being on notice of any such misleading, inaccurate or otherwise inappropriate information, it will re-conduct the survey and reproduce the data to within the specified scale or accuracy.

Map Sheet Layout:

Kylian

Surveyed by: RGD, MG, DH	Date: August 2023	Datum: Main Head
Drawn by: MA, MB	Date: 03.10.2023	Grid System: Irish National Grid
Checked by: MF	Date: 03.10.2023	ITM10

No.	Date	Description	Revisions
0	03.10.2023	First drawing	

**SOCIETY OF CHARTERED SURVEYORS**  
IRELAND

**RICS**  
The Royal Institution of Chartered Surveyors

**THE SURVEY ASSOCIATION**  
FULL MEMBER

**EUROPEAN GPR ASSOCIATION**

## Murphy

GEOSPATIAL

Topographic surveys, Measured Building Surveys,  
Setting Out, As-Built Surveys, Hydrographic Surveys, Legal Mapping,  
Pipeline Surveys, Services Location, Ground Penetrating Radar,  
Drone Scanning, Remotely Sensed Photography

**Kildare Cork Dublin Belfast Glasgow Manchester London**

**Head Office**  
Global House  
Kilcullen Business Campus  
Kilcullen Co. Kildare  
Ireland

Phone: (+353) 045 484040  
Fax: (+353) 045 484004  
Email: info@murphysurveys.ie

**Client :** MWIP

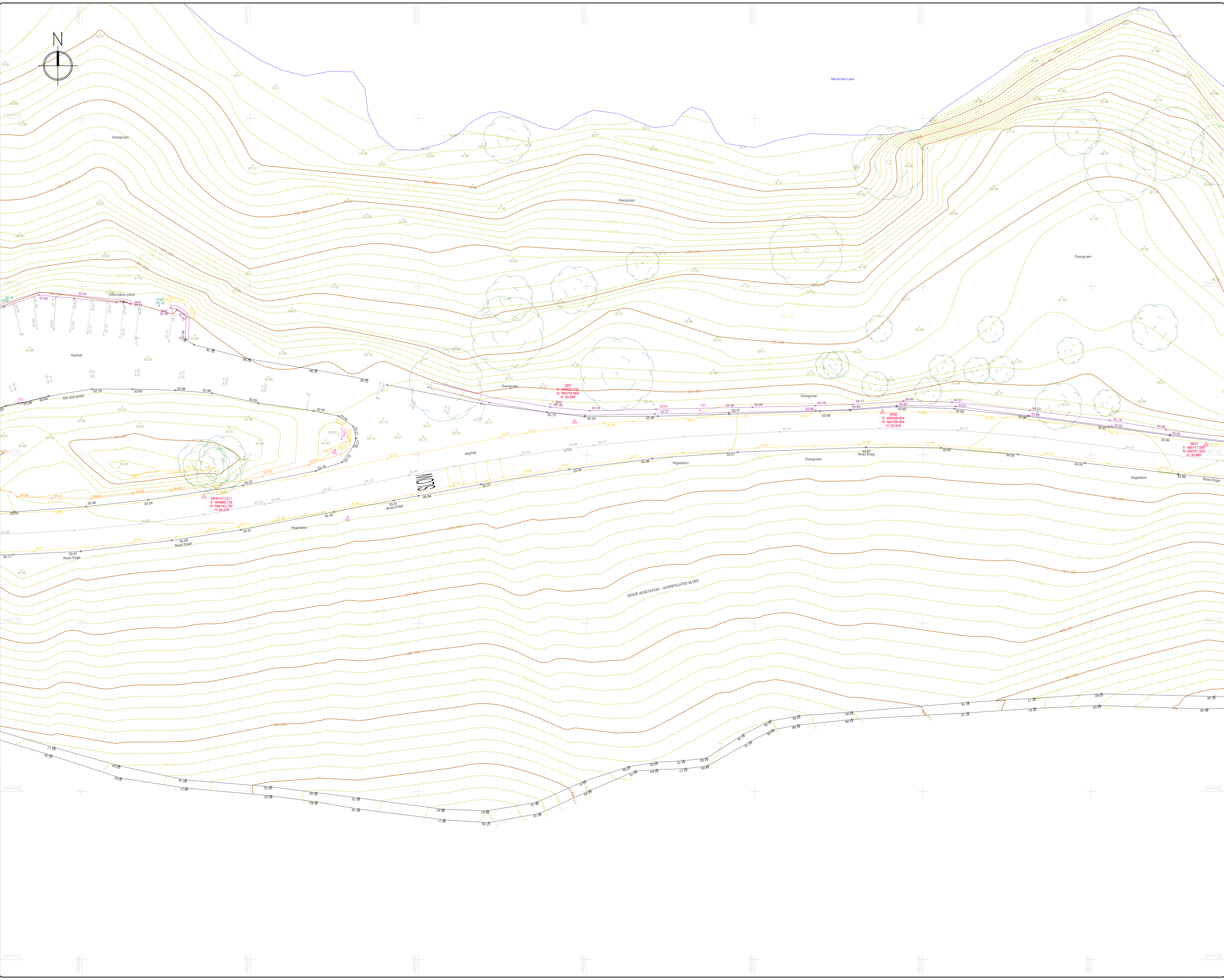
**Project :** Killarney Lakes Greenway – Dinis to Torc

**Date :** 03.10.2023 **Scale :** 1:250@A1

**Description :** Topographical survey

**Drawing Number :** MGS52519\_T\_2D\_ITM\_Rev0\_2

© Copyright 2023 MURPHY GEOSPATIAL LTD



### LEGEND

#### Street furniture & Services

5.12 Over Head Wires (LIAS) - Pylon ESB	5.12 Bus Stop	5.12 Road Sign	5.12 Phone Box
5.12 Flowerbed	5.12 Bollard	5.12 Bench Seat	5.12 Dust
5.12 Pipe	5.12 Beacon	5.12 Kiosk	5.12 Gas Cover
5.12 Lift	5.12 Coalhole Cover	5.12 Gully	5.12 C P Box
5.12 Barrier	5.12 Bore Hole	5.12 U.S. Car Park Vek	5.12 Waste Bin
5.12 Pump	5.12 Electricity Pole	5.12 Hydrant	5.12 Fire Hydrant
5.12 Trial Pit	5.12 Telegraph pole	5.12 ESB Box	5.12 ESB Inspection Cover
5.12 Postbox	5.12 CCTV Camera Pole	5.12 Traffic Control Box	5.12 Traffic Control Box
5.12 Water Valve	5.12 Lamp Post	5.12 Traffic Control Box	5.12 Traffic Control Box
5.12 Gas Valve	5.12 Foul Manhole	5.12 LIAS Technical Cubicle	5.12 Ticket Vending Machine
5.12 Sluice Valve	5.12 Surface Water Mh	5.12 Water Meter Cover	5.12 Telecom Inspection Cover
5.12 Air Valve	5.12 Manholes	5.12 Monument / Toilets	5.12 Tank Storage
5.12 Stop Cook	5.12 Air Conditioning Vents	5.12 Tank Storage	5.12 Tank Storage
5.12 C P Post	5.12 Services Inspection Cover	5.12 Tank Storage	5.12 Tank Storage
5.12 Marker Post	5.12 Traffic Inspection Cover	5.12 Tank Storage	5.12 Tank Storage
5.12 Traffic Light	5.12 Cable TV Inspection Cover	5.12 Basement Mh, Cover & Pipe	5.12 Basement Mh, Cover & Pipe
5.12 Parking Meter	5.12 ESB Inspection Cover	5.12 Dashed Jential Mark	5.12 Dashed Jential Mark
5.12 Plane Aerial Mark	5.12 NTL Inspection Cover	5.12 Stay for pole	5.12 Stay for pole
5.12 Smart Card Validator	5.12 Eicom Inspection Cover	5.12 Pipe Protection	5.12 Pipe Protection
5.12 Unknown Valve	5.12 Rodding Eye	5.12 Washout	5.12 Washout

#### Natural Features

5.12 Surface Change	5.12 Water Level	5.12 Golf
5.12 Land Drain	5.12 Crown Level	5.12 Fair Way
5.12 Bottom of Slope	5.12 Invert level	5.12 Green
5.12 Top of Slope	5.12 Bed Level	5.12 Tree Box
5.12 Ditch	5.12 Spotheight	5.12 Other
5.12 Water Edge / Lake / Pond	5.12 Survey Station	5.12 Photo point
5.12 Hedge / Trees Drip Line / Vegetation	5.12 Tree Deciduous	5.12 Top of Tree
5.12 Tree Coniferous	5.12 Tree Deciduous	5.12 Top of Tree

#### Built Features

##### Roads & Road Markings

5.12 Building	5.12 Fence	5.12 Floor Level
5.12 Edge of Road	5.12 Gate	5.12 Apex Height
5.12 Kerb Bottom	5.12 Road Centreline	5.12 Eaves Height
5.12 Kerb Top	5.12 Top of Wall	5.12 Parapet Height
5.12 Bridge Abutment	5.12 Hoarding	5.12 Softt Elevation
5.12 Bridge Deck	5.12 Hoarding	5.12 Slope Level
5.12 Bridge Pier	5.12 Property Line	5.12 Concrete Pad
5.12 Building Facade	5.12 Road Edge	5.12 Track
5.12 Footpath / Platform Train & Tram	5.12 Top of Fence	5.12 Wall / Retaining Wall
5.12 Damp Proof Course / Vierge	5.12 Railway / Tram Rail / Grating / Ramp	5.12 Building Canopy / Roof / Overhang
5.12 Bridge Pier / Wall & Gate Pillar / LIAS Trackbed	5.12 Building Canopy / Roof / Overhang	5.12 Building Canopy / Roof / Overhang
5.12 Cycleway / Private Landing Area	5.12 Building Canopy / Roof / Overhang	5.12 Building Canopy / Roof / Overhang

### Murphy Surveys Ltd. Disclaimer

The user or recipient of the survey data understands and acknowledges this data may be inaccurate or contain errors or omissions and the user or recipient assumes full responsibility for any risks or damages resulting from, arising from, or in connection with any use of or reliance upon data displayed herein. Although significant care has been exercised to produce surveys that satisfy survey accuracy standards, these surveys are only as accurate as the source data from which they were compiled. Although at reasonable steps have been taken to locate all features visible at the time of this survey, there is no guarantee that all will be shown on the drawing, as some above ground features may have obstructed the survey. Wherever possible, areas unable to be surveyed will be labelled as 'UTS'.

The Company shall not be liable for any inaccuracy of the data provided beyond the specified scale or accuracy, or for any matters resulting from their use for purposes other than that stated in the Contract. No liability shall attach to the Surveyor in respect of any consequential loss or damages suffered by the Client.

The Client must promptly notify the Company of any errors in mapping of which it becomes aware. If misleading, inaccurate or otherwise inappropriate information is brought to the Company's attention or the Company itself identifies any such inaccuracy or error in a survey, it shall use its reasonable endeavours to fix or remove it and if necessary in certain instances, the Company being on notice of any such misleading, inaccurate or otherwise inappropriate information, it will re-conduct the survey and reproduce the data to within the specified scale or accuracy.

### Map Sheet Layout:

Surveyed by: RCD, MD, DH	Date: August 2023	Datum: Main Head
Drawn by: JAL, MB	Date: 03.10.2023	Grid System: Irish National Grid
Checked by: MF	Date: 03.10.2023	Revision: 0

No.	Date	Description	Revision
0	03.10.2023	Final drawing	

**Kildare Cork Dublin Belfast Glasgow Manchester London**

**Head Office**

Global House  
Kilcullen Business Campus  
Kilcullen Co. Kildare  
Ireland

Phone: (+353) 045 484040  
Fax: (+353) 045 484004  
Email: info@murphysurveys.ie

**Client :** MWP

**Project :** Killarney Lakes Greenway – Dinis to Torc

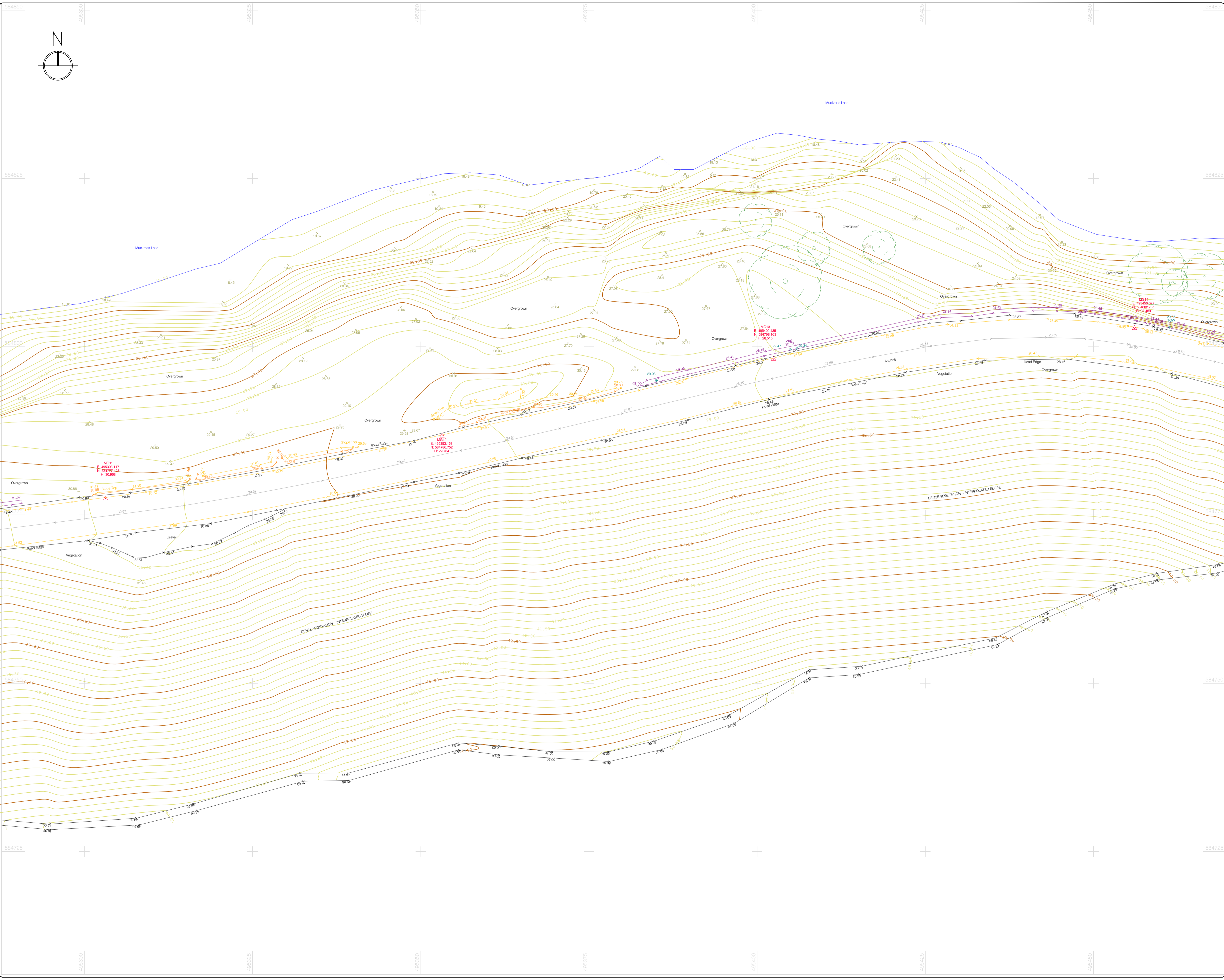
**Date :** 03.10.2023 **Scale :** 1:250@A1

**Description :** Topographical survey

**Drawing Number :** MGS52519\_T\_2D\_ITM\_Rev0\_3

© Copyright 2023 MURPHY GEOSPATIAL LTD





### LEGEND

#### Street furniture & Services

5.12 Over Head Wires (LUAS) - Pylon ESB	5.12 Bus Stop	5.12 Road Sign	5.12 Phone Box
5.12 Flowerbed	5.12 Bollard	5.12 Bench Seat	5.12 Dust
5.12 Pipe	5.12 Beacon	5.12 Kiosk	5.12 Gas Cover
5.12 Lift	5.12 Coalhole Cover	5.12 Gully	5.12 C P Box
5.12 Barrier	5.12 Bore Hole	5.12 UGS W	5.12 UGS Car Park Vent
5.12 Pump	5.12 Electricity Pole	5.12 Waste Bin	5.12 Hydrant
5.12 Trial Pit	5.12 Telegraph pole	5.12 Fire Hydrant	5.12 ESB Box
5.12 Bus/Tram Shelter	5.12 CCTV Camera Pole	5.12 ESB Inspection Cover	5.12 ESB Inspection Cover
5.12 Postbox	5.12 Lamp Post	5.12 Traffic Control Box	5.12 Traffic Control Box
5.12 Valve - General	5.12 Foul Manhole	5.12 LUAS Technical Cubicle	5.12 Ticket Vending Machine
5.12 Gas Valve	5.12 Surface Water Mh	5.12 Water Meter Cover	5.12 Water Meter Cover
5.12 Sluice Valve	5.12 Manholes	5.12 Telecom Inspection Cover	5.12 Monument / Toilets
5.12 Air Valve	5.12 Air Conditioning Vents	5.12 Tank Storage	5.12 Tank Storage
5.12 Stop Cook	5.12 Services Inspection Cover	5.12 Cable TV Inspection Cover	5.12 Basement Mh, Cover & Pipe
5.12 C P Post	5.12 Traffic Inspection Cover	5.12 ESB Inspection Cover	5.12 Dispersal Mark
5.12 Marker Post	5.12 Cable TV Inspection Cover	5.12 NTL Inspection Cover	5.12 Stay for pole
5.12 Traffic Light	5.12 Cable TV Inspection Cover	5.12 ESB Inspection Cover	5.12 Stay for pole
5.12 Parking Meter	5.12 Cable TV Inspection Cover	5.12 ESB Inspection Cover	5.12 Stay for pole
5.12 Plane Aerial Mark	5.12 Cable TV Inspection Cover	5.12 ESB Inspection Cover	5.12 Stay for pole
5.12 Smart Card Validator	5.12 Cable TV Inspection Cover	5.12 ESB Inspection Cover	5.12 Stay for pole
5.12 Unknown Valve	5.12 Cable TV Inspection Cover	5.12 ESB Inspection Cover	5.12 Stay for pole

#### Natural Features

5.12 Surface Change	5.12 Water Level	5.12 Golf
5.12 Land Drain	5.12 Crown Level	5.12 Fair Way
5.12 Bottom of Slope	5.12 Invert Level	5.12 Green
5.12 Top of Slope	5.12 Bed Level	5.12 Tree Box
5.12 Ditch	5.12 Spotheight	5.12 Other
5.12 Water Edge / Lake / Pond	5.12 Tree Deciduous	5.12 Survey Station
5.12 Hedge / Trees Drip Line / Vegetation	5.12 Tree Coniferous	5.12 Photo point

#### Built Features

##### Roads & Road Markings

5.12 Building	5.12 Fence	5.12 Floor Level
5.12 Edge of Road	5.12 Gate	5.12 Apex Height
5.12 Kerb Bottom	5.12 Road Centreline	5.12 Eaves Height
5.12 Kerb Top	5.12 Top of Wall	5.12 Parapet Height
5.12 Bridge Abutment	5.12 Hoarding	5.12 Soft Elevation
5.12 Bridge Deck	5.12 Bridge Pier	5.12 Property Line
5.12 Bridge Pier	5.12 Road Edge	5.12 Concrete Pad
5.12 Building Facade	5.12 Top of Fence	5.12 Track
5.12 Footpath / Platform Train & Tram	5.12 Wall / Retaining Wall	5.12 Fair Way
5.12 Damp Proof Course / Vene	5.12 Railway / Tram Rail / Grating / Ramp	5.12 Green
5.12 Bridge Pier / Wall & Gate Pillar / LUAS Trackbed	5.12 Building Canopy / Roof / Overhang	5.12 Tree Box
5.12 Cycleway / Private Landing Area		

##### Other

5.12 Survey Station	5.12 Photo point
---------------------	------------------

**Murphy Surveys Ltd. Disclaimer**

The user or recipient of this survey data understands and acknowledges this data may be inaccurate or contain errors or omissions and the user or recipient assumes full responsibility for any risks or damages resulting from, arising from, or in connection with any use of or reliance upon data displayed herein. Although significant care has been exercised to produce surveys that satisfy survey accuracy standards, these surveys are only as accurate as the source data from which they were compiled. Although all reasonable steps have been taken to locate all features visible at the time of the survey, there is no guarantee that all will be shown on the drawing, as some above ground features may have obstructed the survey. Wherever possible, areas unable to be surveyed will be labelled as "UTS".

The Company shall not be liable for any inaccuracy of the data provided beyond the specified scale or accuracy, or for any matters resulting from their use for purposes other than that stated in the Contract. No liability shall attach to the Surveyor in respect of any consequential loss or damages suffered by the Client.

The Client must promptly notify the Company of any errors in mapping of which it becomes aware. If misleading, inaccurate or otherwise inappropriate information is brought to the Company's attention or the Company itself identifies any such impression or error in a survey, it shall use its reasonable endeavours to fix or remove it and if necessary in certain instances, the Company being on notice of any such misleading, inaccurate or otherwise inappropriate information, it will re-conduct the survey and reproduce the data to within the specified scale or accuracy.

Map Sheet Layout:

Killarney

Surveyed by: RCD, MG, DH	Date: August 2023	Datum: Main Head
Drawn by: MA, MB	Date: 03.10.2023	Grid System: Irish National Grid
Checked by: MF	Date: 03.10.2023	ITM10

No	Date	Description	Revisions
0	03.10.2023	First drawing	

**SOCIETY OF CHARTERED SURVEYORS**  
IRELAND

**THE SURVEY ASSOCIATION**  
FULL MEMBER

**EUROPEAN GPR ASSOCIATION**

**RICS**  
The mark of Professional Excellence

**Murphy**  
GEOSPATIAL

Topographic surveys, Measured Building Surveys,  
Setting Out, As-Built Surveys, Hydrographic Surveys, Legal Mapping,  
Pipeline Surveys, Services Location, Ground Penetrating Radar,  
Drone Surveys, Aerial Photography, Remote Sensing, Photogrammetry

**Kildare Cork Dublin Belfast Glasgow Manchester London**

**Head Office**

Global House  
Kilcullen Business Campus  
Kilcullen Co. Kildare  
Ireland

Phone: (+353) 045 484040  
Fax: (+353) 045 484004  
Email: info@murphysurveys.ie

**Client :**

MWP

**Project :**

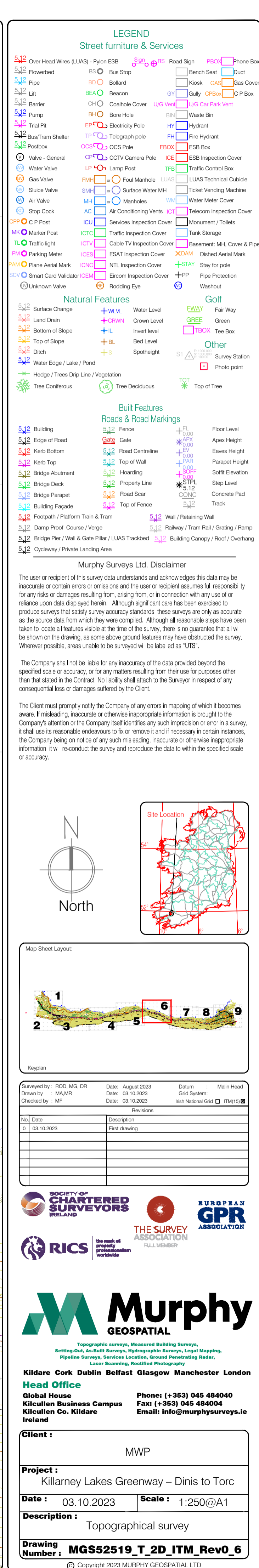
Killarney Lakes Greenway – Dinis to Torc

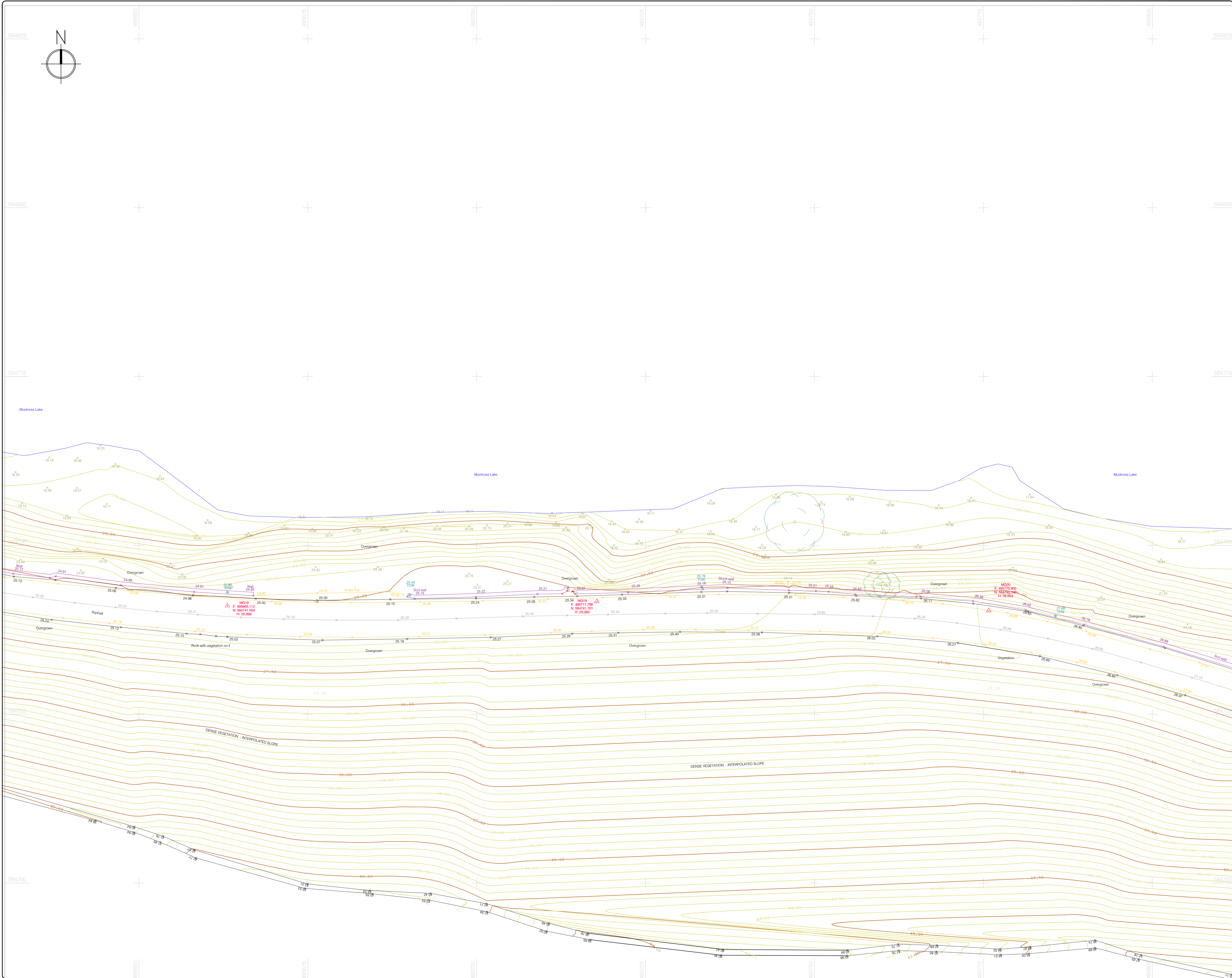
**Date :** 03.10.2023 **Scale :** 1:250@A1

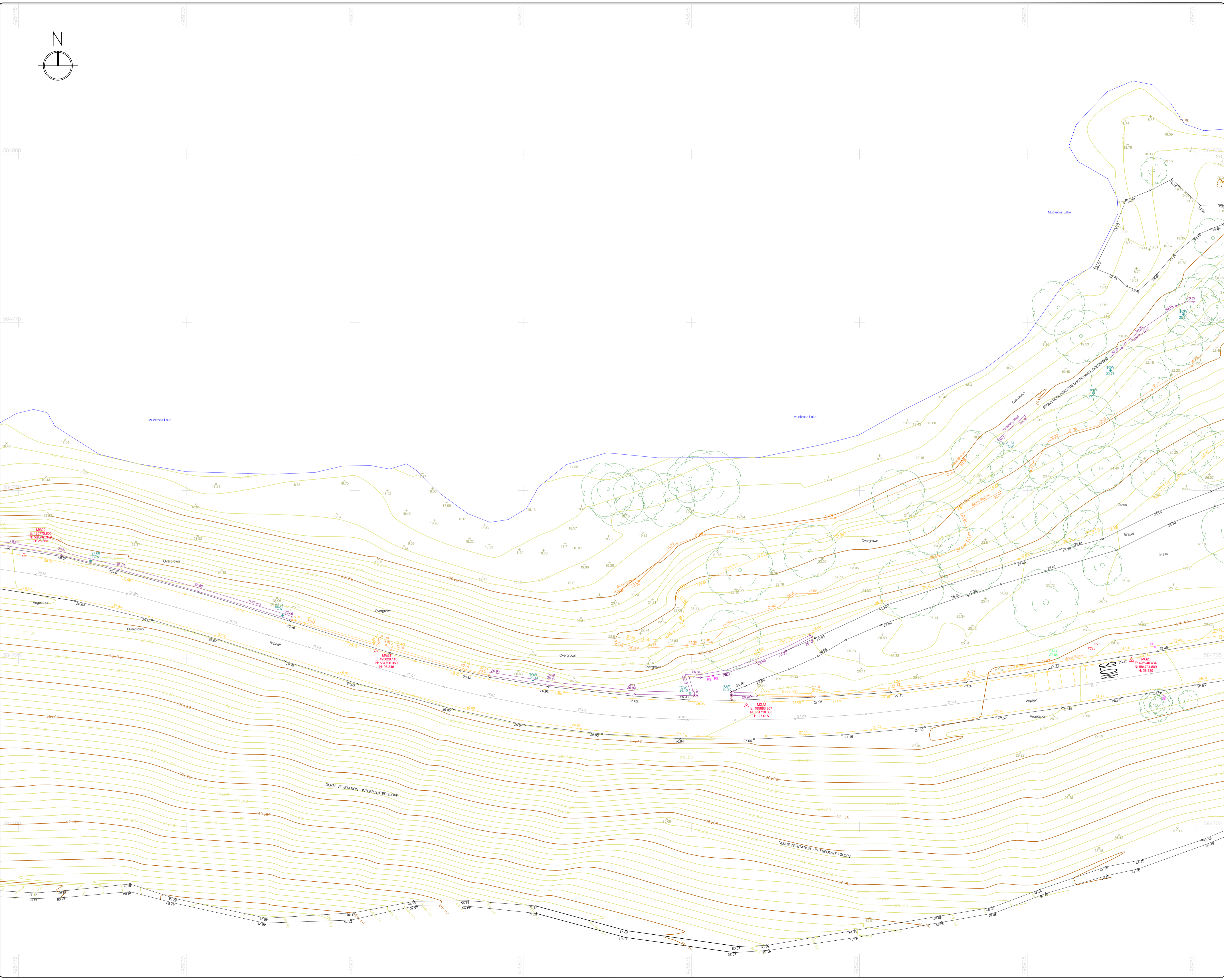
**Description :** Topographical survey

**Drawing Number :** MGS52519\_T\_2D\_ITM\_Rev0\_5

© Copyright 2023 MURPHY GEOSPATIAL LTD



[illegible]



### LEGEND

#### Street furniture & Services

5.12 Over Head Wires (LUAS) - Pylon ESB	5.12 Bus Stop	5.12 Road Sign	5.12 Phone Box
5.12 Flowerbed	5.12 Bollard	5.12 Bench Seat	5.12 Dust
5.12 Pipe	5.12 Beacon	5.12 Kiosk	5.12 Gas Cover
5.12 Lift	5.12 Coalhole Cover	5.12 Gully	5.12 C P Box
5.12 Barrier	5.12 Bore Hole	5.12 UGS Car Park Vent	5.12 Waste Bin
5.12 Pump	5.12 Electricity Pole	5.12 Hydrant	5.12 Fire Hydrant
5.12 Trial Pit	5.12 Telegraph pole	5.12 ESB Box	5.12 ESB Inspection Cover
5.12 Postbox	5.12 CCTV Camera Pole	5.12 ESB Inspection Cover	5.12 ESB Inspection Cover
5.12 Valve - General	5.12 Lamp Post	5.12 Traffic Control Box	5.12 Traffic Control Box
5.12 Gas Valve	5.12 Foul Manhole	5.12 LUAS Technical Cubicle	5.12 Ticket Vending Machine
5.12 Sluice Valve	5.12 Surface Water Mh	5.12 Water Meter Cover	5.12 Water Meter Cover
5.12 Air Valve	5.12 Manholes	5.12 Telecom Inspection Cover	5.12 Monument / Toilets
5.12 Stop Cook	5.12 Air Conditioning Vents	5.12 Telecom Inspection Cover	5.12 Monument / Toilets
5.12 C P Post	5.12 Services Inspection Cover	5.12 Tank Storage	5.12 Tank Storage
5.12 Marker Post	5.12 Traffic Inspection Cover	5.12 Basement: Mh, Cover & Pipe	5.12 Basement: Mh, Cover & Pipe
5.12 Traffic light	5.12 Cable TV Inspection Cover	5.12 Basement: Mh, Cover & Pipe	5.12 Basement: Mh, Cover & Pipe
5.12 Parking Meter	5.12 ESB Inspection Cover	5.12 Dashed aerial Mark	5.12 Dashed aerial Mark
5.12 Plane Aerial Mark	5.12 NTL Inspection Cover	5.12 Stay for pole	5.12 Stay for pole
5.12 Smart Card Validator	5.12 Ecom Inspection Cover	5.12 Pipe Protection	5.12 Pipe Protection
5.12 Unknown Valve	5.12 Rodding Eye	5.12 Washout	5.12 Washout

#### Natural Features

5.12 Surface Change	5.12 Water Level	5.12 Golf	5.12 Golf
5.12 Land Drain	5.12 Crown Level	5.12 Green	5.12 Green
5.12 Bottom of Slope	5.12 Invert level	5.12 Tree Box	5.12 Tree Box
5.12 Top of Slope	5.12 Bed Level	5.12 Other	5.12 Other
5.12 Ditch	5.12 Spotheight	5.12 Survey Station	5.12 Survey Station
5.12 Water Edge / Lake / Pond	5.12 Hodge / Trees Drip Line / Vegetation	5.12 Tree Deciduous	5.12 Tree Deciduous
5.12 Tree Coniferous	5.12 Tree Coniferous	5.12 Top of Tree	5.12 Top of Tree

#### Built Features

##### Roads & Road Markings

5.12 Building	5.12 Fence	5.12 Floor Level	5.12 Floor Level
5.12 Edge of Road	5.12 Gate	5.12 Apex Height	5.12 Apex Height
5.12 Kerb Bottom	5.12 Road Centreline	5.12 Eaves Height	5.12 Eaves Height
5.12 Kerb Top	5.12 Top of Wall	5.12 Parapet Height	5.12 Parapet Height
5.12 Bridge Abutment	5.12 Hoarding	5.12 Soft Elevation	5.12 Soft Elevation
5.12 Bridge Deck	5.12 Bridge Pier	5.12 Road Score	5.12 Road Score
5.12 Building Facade	5.12 Top of Fence	5.12 Track	5.12 Track
5.12 Footpath / Platform Train & Tram	5.12 Wall / Retaining Wall	5.12 Fair Way	5.12 Fair Way
5.12 Damp Proof Course / Verge	5.12 Railway / Train Rail / Grating / Ramp	5.12 Tee Box	5.12 Tee Box
5.12 Bridge Pier / Wall & Gate Pillar / LUAS Trackbed	5.12 Building Canopy / Roof / Overhang	5.12 Concrete Pad	5.12 Concrete Pad
5.12 Cycleway / Private Landing Area	5.12 Building Canopy / Roof / Overhang	5.12 Concrete Pad	5.12 Concrete Pad

Murphy Surveys Ltd. Disclaimer

The user or recipient of this survey data understands and acknowledges this data may be inaccurate or contain errors or omissions and the user or recipient assumes full responsibility for any risks or damages resulting from, arising from, or in connection with any use of or reliance upon data displayed herein. Although significant care has been exercised to produce surveys that satisfy survey accuracy standards, these surveys are only as accurate as the source data from which they were compiled. Although all reasonable steps have been taken to locate all features visible at the time of the survey, there is no guarantee that all will be shown on the drawing, as some above ground features may have obstructed the survey. Wherever possible, areas unable to be surveyed will be labelled as "UTS".

The Company shall not be liable for any inaccuracy of the data provided beyond the specified scale or accuracy, or for any matters resulting from their use for purposes other than that stated in the Contract. No liability shall attach to the Surveyor in respect of any consequential loss or damages suffered by the Client.

The Client must promptly notify the Company of any errors in mapping of which it becomes aware. If misleading, inaccurate or otherwise inappropriate information is brought to the Company's attention or the Company itself identifies any such impression or error in a survey, it shall use its reasonable endeavours to fix or remove it and if necessary in certain instances, the Company being on notice of any such misleading, inaccurate or otherwise inappropriate information, it will re-conduct the survey and reproduce the data to within the specified scale or accuracy.

Map Sheet Layout:

Surveyed by	ROD, MG, DH	Date	August 2023	Datum	Main
Drawn by	MA, MB	Date	03.10.2023	Grid System	Irish National Grid
Checked by	MF	Date	03.10.2023	Irish National Grid	ITM110

No	Date	Description	Revisions
0	03.10.2023	Final drawing	

Topographic surveys, Measured Building Surveys,  
Setting Out, As-Built Surveys, Hydrographic Surveys, Legal Mapping,  
Pipeline Surveys, Services Location, Ground Penetrating Radar,  
Archaeological Surveys, Remote Sensing, Aerial Photography

Kildare Cork Dublin Belfast Glasgow Manchester London

**Head Office**  
Global House  
Kilcullen Business Campus  
Kilcullen Co. Kildare  
Ireland

Phone: (+353) 045 484040  
Fax: (+353) 045 484004  
Email: info@murphysurveys.ie

Client : MWP

Project : Killarney Lakes Greenway – Dinis to Torc

Date : 03.10.2023 Scale : 1:250@A1

Description : Topographical survey

Drawing Number : MGS52519\_T\_2D\_ITM\_Rev0\_8

© Copyright 2023 MURPHY GEOSPATIAL LTD

