



**NPWS**

An tSeirbhís Páirceanna  
Náisiúnta agus Fiadhúlra  
National Parks and Wildlife  
Service

## Section 42 – Adding a Site Boundary (Maps)

As part of your section 42 application you will be required to add a site boundary. This is done by creating a **pololygon** on the map provided.

1. First, look over the instructions on the **Map** section of the application.

### Serious Damage Permit Application

1 Instructions ✓ 2 Applicant ✓ 3 Land ✓ 4 Damage, Controls and Disposals ✓ 5 Nominee ✓ 6 Firearm ✓ 7 Map

8 Documents 9 Final

#### Add a Site Boundary\*

**Find and zoom to the site location.**

- You can use the search bar to find an address, place or Eircode.
- You can use the zoom ( + - ) and pan tools to locate the exact site.
- It may be useful to change the basemap to Imagery to better identify the site. Click the Map Gallery button in the top right of the map to change the basemap.
- Ensure you are zoomed in so that you can see the entire site clearly.

**To capture the site boundary.**

- Click on the Area button (second from the top in the top right corner of the map).
- Click on the map to start capturing the site.
- Continue to click around the boundary of the site to capture the shape.
- When you are finished double click the map to finish.
- To finish click the **Submit** button
- You can only enter one location boundary at a time. If you wish to enter additional locations, click on 'submit another map' below'

**Note: If you are modifying your application, you must submit the site boundaries again.**  
**Note: You will not be able to save until you have finished the site boundary.**

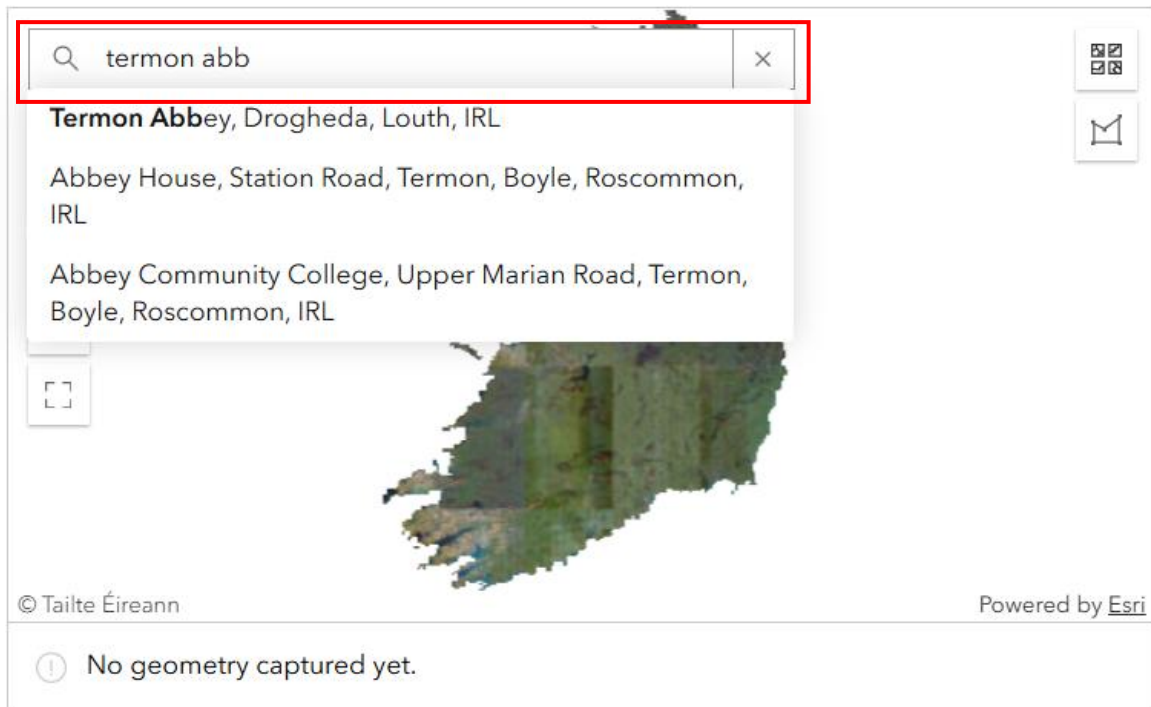
Find address or place

© Talto Eirsann Powered by Esri

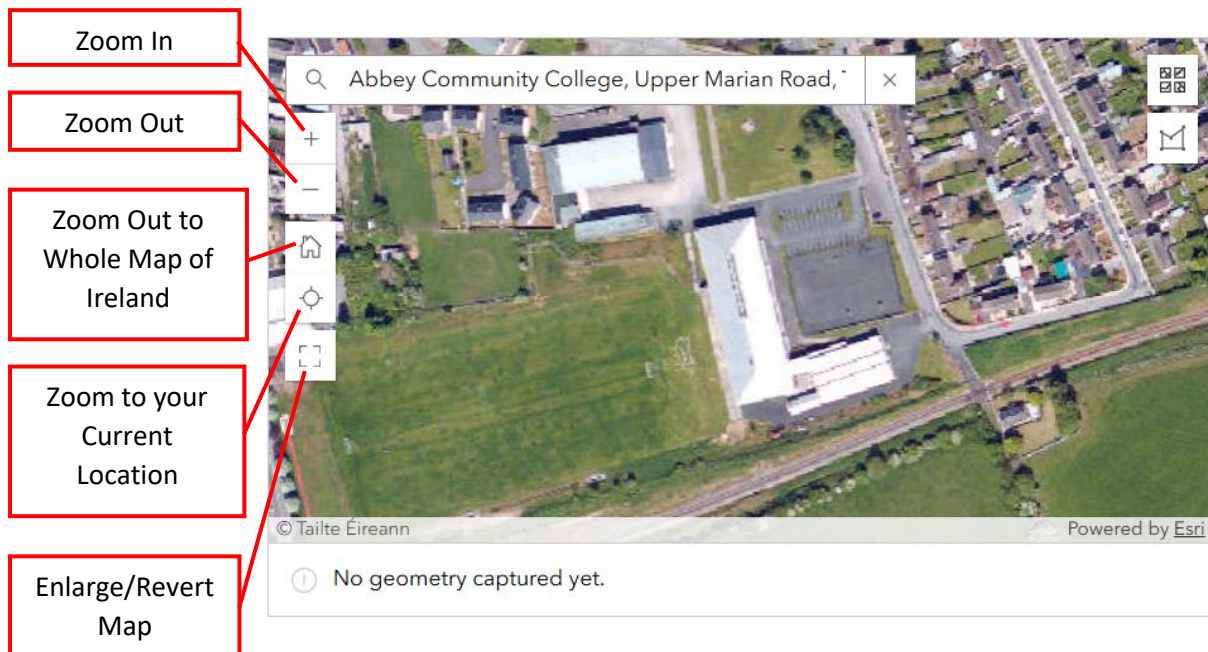
No geometry captured yet.

**Save Boundary**

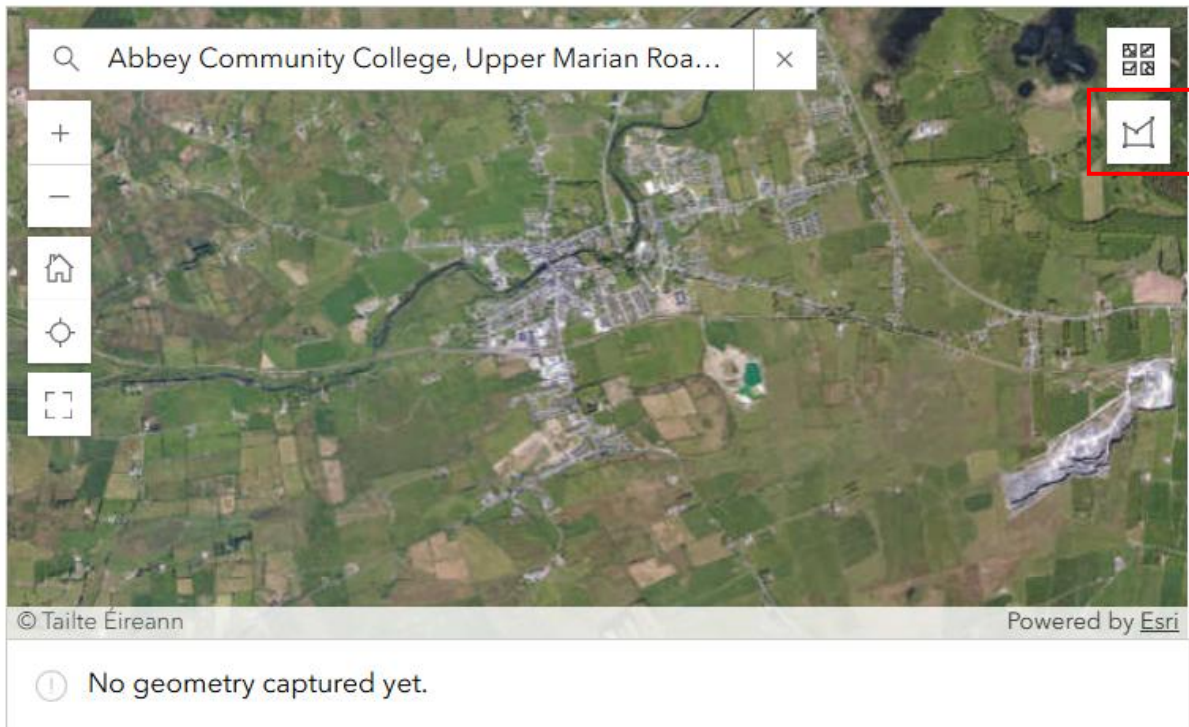
2. Then, use the search bar to locate the correct area on the map. You can search using an Eircode, townland or address.



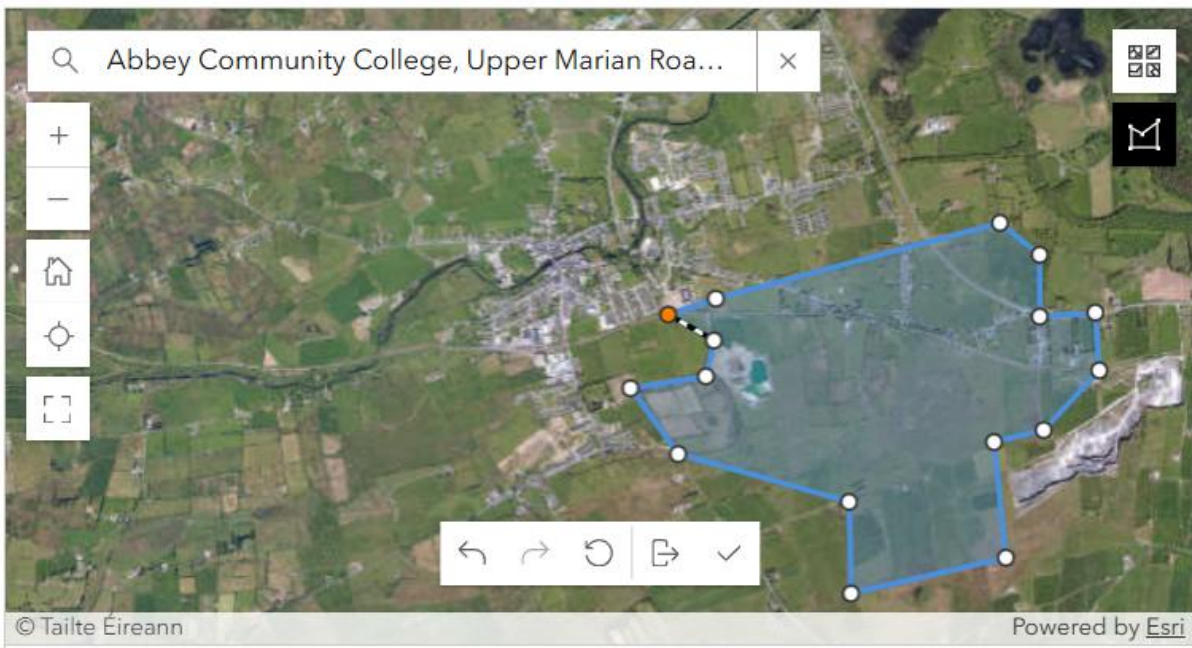
3. When you select the address, the map will automatically zoom to that location. You can then use the tools on the left side of the map to navigate to the correct location.



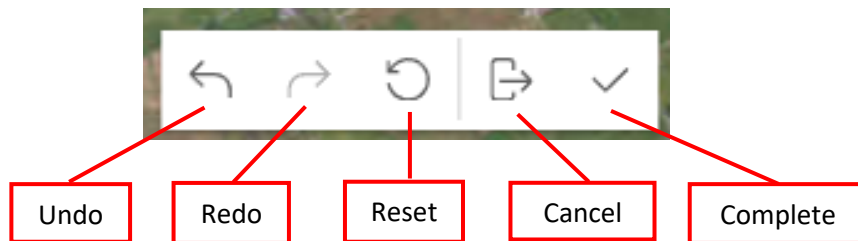
4. When you are in the correct location, use the **Polygon Tool** to draw the site boundary. Click on the button outlined in red below.



5. Click along the perimeter of the area you want to outline. This will create a shape in blue.



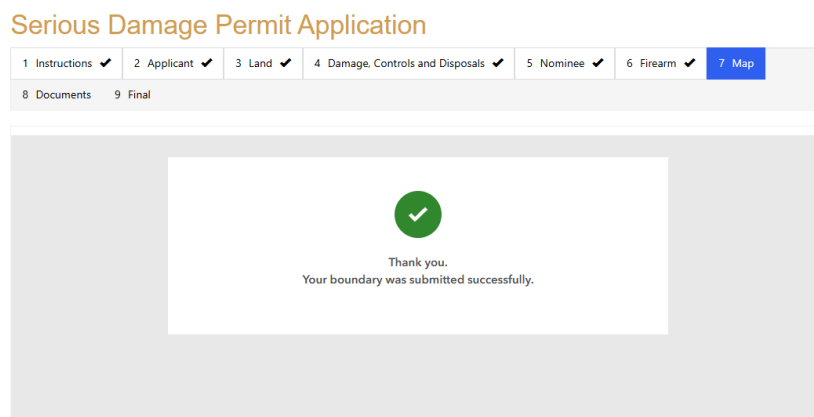
6. You can use the tools on the bottom of the map to help you. When you are finished, click the ***Tick*** (complete) button.



7. Once you have completed your site boundary, click the ***Save Boundary*** button



8. When your site boundary has been submitted you will see the following:



9. To submit another site boundary, select **No** under **Have all maps been submitted?** Then select **Submit another map** and repeat steps 1-8.

**Have all maps been submitted?**

No  Yes

Please note if no map is created and submitted your application will be returned for amendment.

---

[Previous](#) [Submit another map](#)

10. When you have submitted all of your site boundaries, please select **Yes** under **Have all maps been submitted?** Then click **Next to continue your application.**

**Have all maps been submitted?**

No  Yes

Please note if no map is created and submitted your application will be returned for amendment.

---

[Previous](#) [Submit another map](#) [Next](#)