

Anaclann Dúlra Shliabh Bladhma

Slieve Bloom Mountains Nature Reserve



Cearc Fraoigh
Red Grouse



Comhshaol, Oidhreacht agus Rialtas Áitiúil
Environment, Heritage and Local Government



Suíomh
Treoracha chuig Droim na Ceapaí Airde le córas loingseoireachta satailíte:
Tagairt Ghreille: N 364 065
domhanleithhead: 53°6'29" (thuaidh)
domhanfhad: 7°27'22" (thiar)

Location
Directions to the Ridge of Capard for satellite navigation systems:
Grid Reference: N 364 065
latitude 53°6'29" (north); longitude 7°27'22" (west)

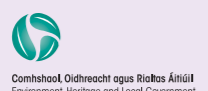
The Slieve Bloom Mountains Nature Reserve lies on the Offaly – Laois border, in the midlands of Ireland. There are several ways to access the range. The M7 motorway (from Dublin to Limerick) passes south of the nature reserve. There are a number of parking facilities available. At the Ridge of Capard, there is a car park, three waymarked circular trails and a viewing platform overlooking the surrounding countryside. Here the long distance walk, the Slieve Bloom Way, also passes through the nature reserve.

Enjoying the Nature Reserve
To enjoy the mountains safely, bring suitable footwear, outdoor clothing, be prepared for bad weather, and make sure someone knows your return plans. Please keep dogs under control to prevent disturbance to ground nesting birds.

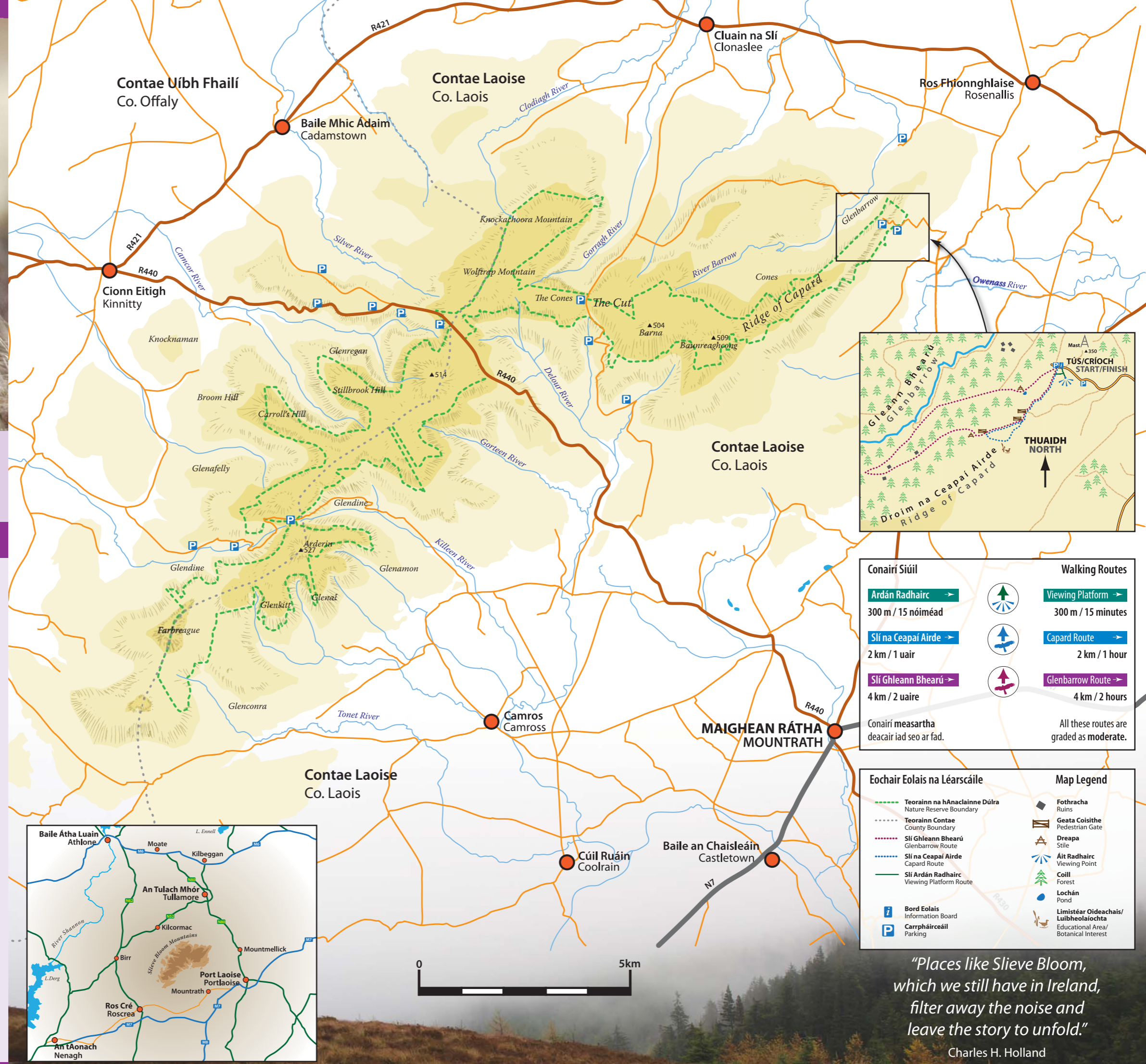
The nature reserve is managed by the National Parks and Wildlife Service; part of the Department of the Environment, Heritage and Local Government. National Parks and Wildlife Service Headquarters:
Address: 2 Conway Estates, Station Road, Kildare Town, County Kildare.
Tel: (045) 534072
Email: natureconservation@environ.ie
Web: www.npws.ie

Aoibhneas na hAnaclainne Dúlra
Le bheith sábháilte sna sléibhte caith bróga nó buataisí oiriúnacha agus éadaí lasmuigh, bí ullamh faoi choinne drochaimsire agus abair le duine éigin an t-am le bheith ag súil leat ar ais. Ná lig do do mhadra cur isteach ar éin a thógann nead ar an talamh.

Is í an tSeirbhís Páirceanna Náisiúnta agus Fiadhúlra, ar cuid í den Roinn Comhshaol, Oidhreacht agus Rialtais Áitiúil, a bhainistíonn an anaclann dúlra.
Seoladh: 2 Eastáit Chonbhai, Bóthar an Stáisiúin, Baile Chill Dara, Contae Chill Dara.
Teileafón: (045) 534072
Ríomhphost: natureconservation@environ.ie
Suíomh Gréasáin: www.npws.ie



Comhshaol, Oidhreacht agus Rialtas Áitiúil
Environment, Heritage and Local Government



Conairí Siúil	Walking Routes
Ardán Radhairc → 300 m / 15 nóiméad	Viewing Platform → 300 m / 15 minutes
Slí na Ceapaí Airde → 2 km / 1 uair	Capard Route → 2 km / 1 hour
Slí Ghleann Bhearú → 4 km / 2 uaire	Glenbarrow Route → 4 km / 2 hours
Conairí measartha deacair iad seo ar fad.	All these routes are graded as moderate.

Eochair Eolais na Léarscáile	Map Legend
Teorainn Contae County Boundary	Fothracha Ruins
Teorainn na hAnaclainne Dúlra Nature Reserve Boundary	Geata Coisithe Pedestrian Gate
Slí Ghleann Bhearú Glenbarrow Route	Dreapa Stíle
Slí na Ceapaí Airde Capard Route	Áit Radhairc Viewing Point
Slí Ardán Radhairc Viewing Platform Route	Coill Forest
Bord Eolais Information Board	Lochán Pond
Carrpháircéil Parking	Limistéar Oideachais/ Luibheolaíochta Educational Area/ Botanical Interest

"Places like Slieve Bloom, which we still have in Ireland, filter away the noise and leave the story to unfold."

Charles H. Holland